



Progressive Policing & Community Engagement

BART Police Department | Update to the Board of Directors

November 18, 2021



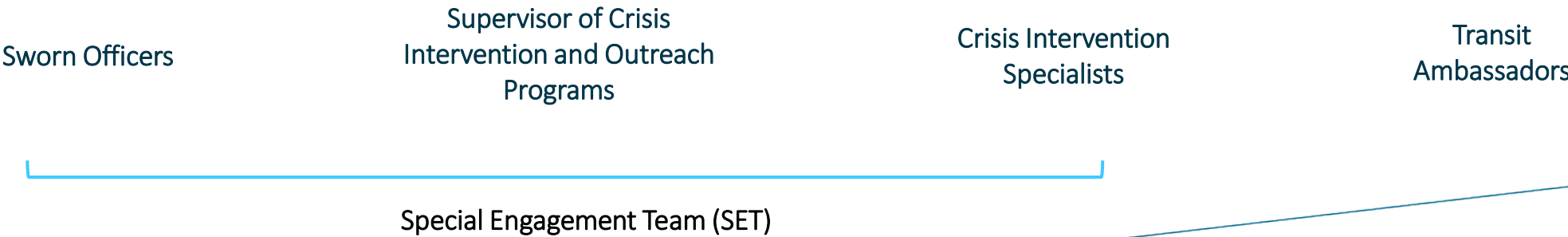
BART Police: Progressive Policing & Community Engagement Bureau

BART Police recognizes that not every crisis on BART needs to be addressed by a sworn police officer.

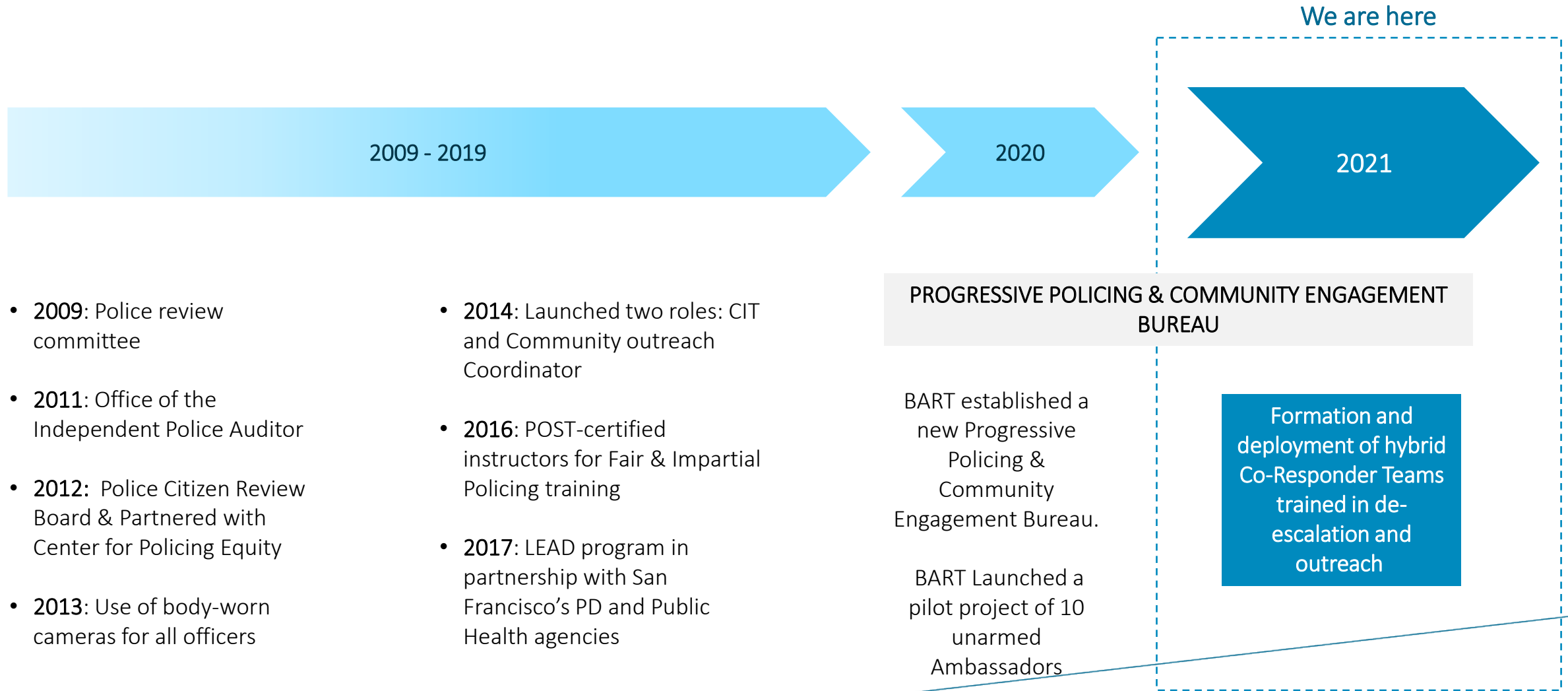
The Bureau of Progressive Policing and Community Engagement’s mission is to engage the BART Police Department in leading transparent, equitable, and innovative policing practices to improve public safety across the diverse communities in which we serve.

We are committed to rebuilding trust and nurturing relationships between our communities and law enforcement through a culture of accountability, responsibility, and collaboration.

BART Progressive Policing Classifications

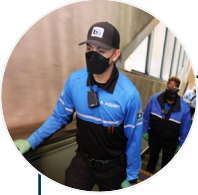


A Commitment to Progressive Policing



Plan of Action

In January 2020, we set a goal to increase the number and type of civilian staff to respond to societal issues



Action Plan

Implement Pilot Crisis Intervention teams consisting of

- Supervisor of Crisis Intervention and Outreach Programs
- Crisis Intervention Specialist
- Plain clothes Officer (security)

Short Term

Add resources dedicated to BPD Progressive Policing Bureau

- 20 Crisis Intervention Specialists
- 2 Police Sergeants and 10 Police Officers

We are here

Medium Term

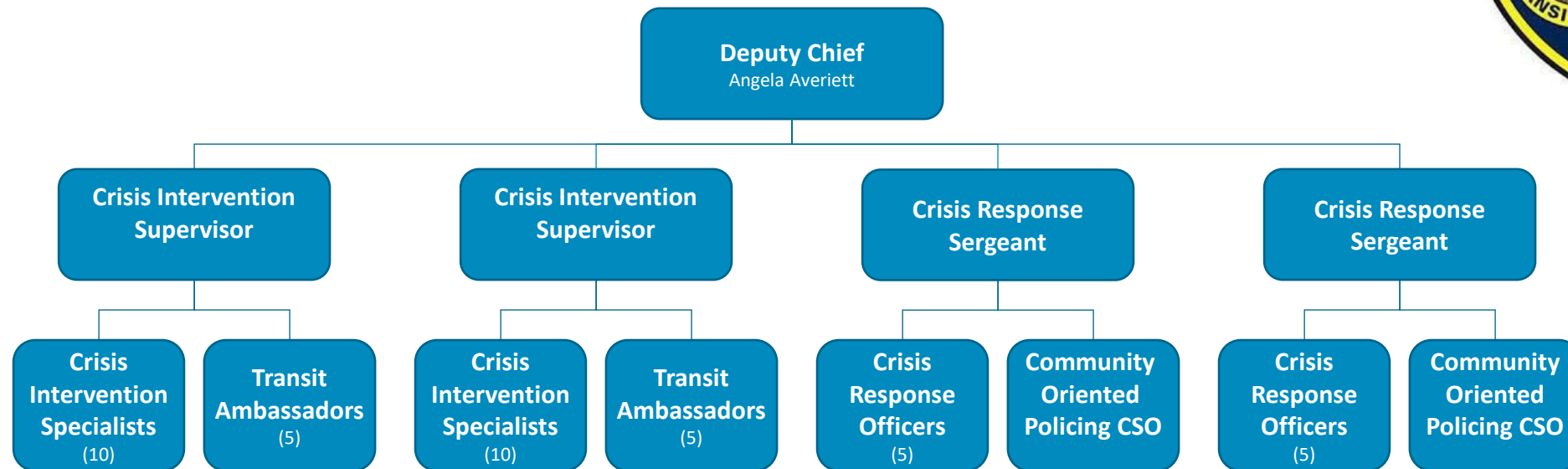
Establish response Protocol

Long Term

Evaluate program for 18-month period by setting data driven benchmarks and reevaluate to determine if modifications need to be made

Progressive Policing & Community Engagement Bureau

47 Person Bureau



Current Staffing Levels

Title	# Positions	# Filled Positions	# Open Positions	Target Fill Date
Crisis Intervention Supervisor	2	2	0	Filled
Crisis Intervention Specialist	20	9	11	Late January 2022
Transit Ambassador	10	10	0	Filled
Crisis Response Sergeant	2	1	1	December 2021
Crisis Response Officer	10	5	5	December 2021
Community-Oriented Policing CSO	2	2	0	Filled
Total	46	26	20	--

Employee Snapshot

CIVILIAN STAFF

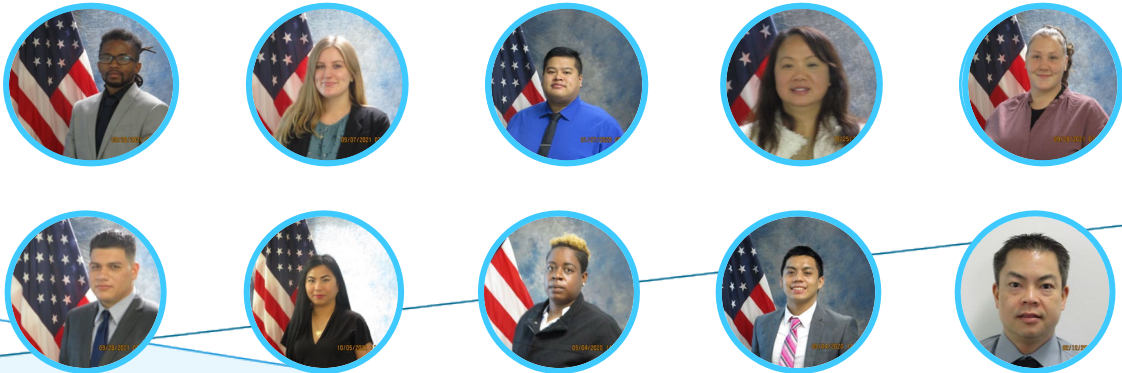
Supervisors



Crisis Intervention Specialists



Ambassadors



SWORN OFFICERS

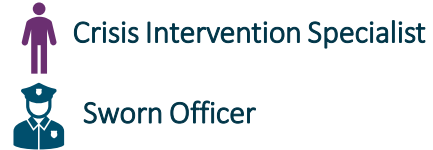
Sergeant

















Officers



Current Deployment Plan



Line	Deployment Location	Staffing	Hours
Red	Balboa Park	  	4:00am – 12:00pm
Green	Lake Merritt	  	4:00am – 12:00pm
Orange	El Cerrito Del Norte	  	4:00am – 12:00pm
Yellow	Walnut Creek	  	4:00am – 12:00pm
Blue/Green	Castro Valley	 	4:00am – 12:00pm

Full Staff Deployment Plan

Line	Deployment Location	Staffing	Hours
Yellow	Walnut Creek	2 Crisis Intervention Specialists, 1 Police Officer	4:00am – 12:00pm; 3:30pm – 11:30pm
Green (Pink)	Fremont / Berryessa	2 Crisis Intervention Specialists, 1 Police Officer	4:00am – 12:00pm; 3:30pm – 11:30pm
Orange	El Cerrito Del Norte	2 Crisis Intervention Specialists, 1 Police Officer	4:00am – 12:00pm; 3:30pm – 11:30pm
Blue	Castro Valley	2 Crisis Intervention Specialists, 1 Police Officer	4:00am – 12:00pm; 3:30pm – 11:30pm
Red (Purple)	Balboa Park	2 Crisis Intervention Specialists, 1 Police Officer	4:00am – 12:00pm; 3:30pm – 11:30pm

Closing Remarks