



Measure RR Equity Program and Small Business Update

March 14, 2019

Economic Opportunity Programs



SMALL BUSINESS PROGRAM (SB)

- Provides a preference to SB prime bidders or prime bidders who meet the SB Subcontractor Participation Goal.



NON-DISCRIMINATION PROGRAM FOR SUBCONTRACTING (ND)

- Seeks to ensure that prime contractors do not discriminate in their selection of subcontractors.



Disadvantaged Business Enterprise (DBE)

- Race/gender conscious and neutral strategies to help DBEs gain opportunities at BART on USDOT funded contracts.



Measure RR Update – Project Status



Program	\$ Millions	Total # Projects	# Projects in Planning	# Projects in Design	# Projects in Bid/Award	# Projects in Construction	# Projects Completed
Renew Track	\$625	21	8	4	2	5	2
Renew Power Infrastructure	\$1,225	25	0	15	1	8	1
Repair Tunnels & Structures	\$570	22	2	11	3	6	0
Renew Mechanical	\$135	7	0	5	1	1	0
Replace Train Control/Increase Capacity	\$400	1	0	0	1	0	0
Renew Stations	\$210	3	0	0	2	1	0
Expand Safe Access to Stations	\$135	21	3	12	1	5	0
Design/Engineer to Relieve Crowding	\$200	8	3	3	2	0	0
Total	\$3,500	108	16	50	13	26	3

Measure RR Update– Small Business



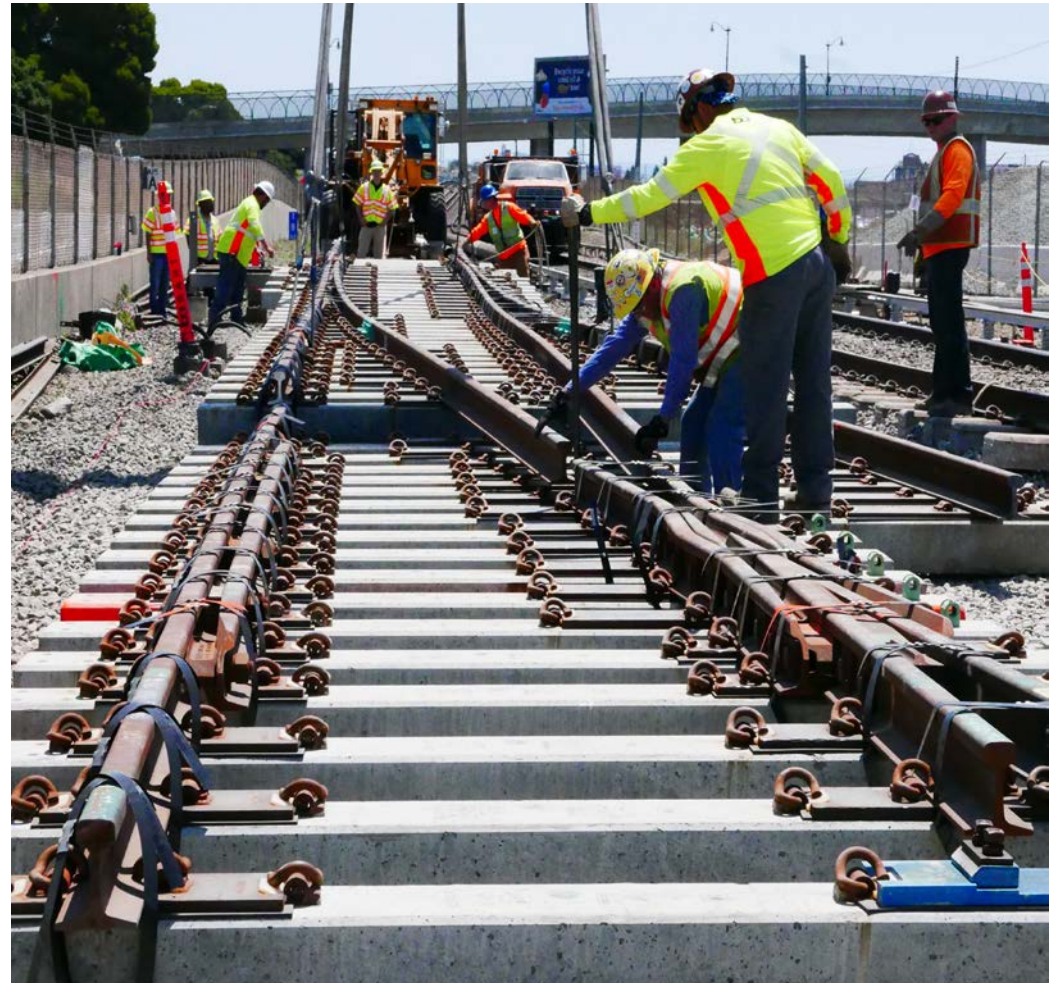
Program	Total RR Commitment	Total RR SB Commitment	SB Commitment %	# of SB Contracts
Renew Track	\$47,199,550	\$11,465,412	24%	52
Renew Power	\$144,213,145	\$76,384,823	53%	139
Repair Tunnels & Structures	\$71,985,785	\$12,876,543	18%	47
Renew Mechanical	\$14,547,320	\$2,277,635	16%	25
Replace Train Control/Increase Capacity	\$3,578,654	\$255,358	7%	6
Renew Stations	\$23,593,863	\$2,761,586	12%	18
Expand Safe Access to Stations	\$5,312,061	\$1,793,726	34%	52
Design/Engineer to Relieve Crowding	\$5,723,106	\$1,509,231	26%	13
Total	\$316,153,485	\$109,324,314	35%	352

Notes: All amounts are based on RR fund percent only. Amounts are updated to February 21, 2019. Includes formal contracts only; does not include informal purchases or work performed by BART's own forces. SB totals include DBEs, MSBEs, SBs, and LSBs. Sources: RR commitments are based on RR Requisitions report, Procurement Sealed Bids Report and PeopleSoft Work Plans application. RR% for each project is based on Financial Analysts' report, RR Funds / Total 4 Project Budget. Payments based on PeopleSoft and VPT.

Target Areas for Business Growth



- Traction Power
- 34.5 KV AC Cable Replacement
- Fiber Optic Cables



Presenters



Assistant General Manager
Design & Construction

Phone: 510.464.7592
Email: CHolmes@bart.gov

Department Manager
Office of Civil Rights

Phone: 510.464.7194
Email: MWiggin@bart.gov

Upcoming Construction Contracts To Be Advertised (through 2019)



Project	Anticipated Advertisement Period	Est. Value (\$ millions)
Safety Barrier Maintenance of Way	Now	\$1
Station Emergency Lighting (re-bid)	2019 – Qtr 2	\$11
Powell Station Modernization	2019 – Qtr 2	\$10
Embarcadero Elevator	2019 – Qtr 2	\$8
eBART Yard Facility Canopy	2019 – Qtr 2	\$0.7
eBART Surface Parking Lot	2019 – Qtr 2	\$9
Bike Station at Embarcadero & Civic Center	2019 – Qtr 2	\$0.6
	Subtotal	\$40.3

Upcoming RFP's/RSOQ's Contract Awards (through 2020)



Project	Anticipated Advertisement Period	Est. Value (\$ millions)	Economic Opportunity Program
Train Control CM	2019 – Qtr 3	\$75	DBE/SBE
Train Control DSDC	2019 – Qtr 3	\$75	DBE/SBE
Sustaining Architecture	2019 – Qtr 4	\$9	MSBE
Sustaining CM	2020 – Qtr 1	\$9	MSBE
Sustaining Systems Eng	2020 – Qtr 3	\$12	DBE/SBE
Sustaining Facilities Eng	2020 – Qtr 3	\$6	MSBE
Total		\$186	

Upcoming Construction Contract Awards (through 2019)



Project	Anticipated Advertisement Period	Est. Value (\$ millions)
Downtown SF Canopies	2019 – Qtr 3	\$60
ROW Fence Replacement	2019 – Qtr 3	\$2
TCMP Enabling Works (Switch Mach/Cable)	2019 – Qtr 4	\$25
Sewage Pump Replacement	2019 – Qtr 4	\$6
34.5 kV Cable (Oakland to Union City)	2019 – Qtr 4	TBD
34.5 kV Cable (Ashby to Richmond)	2019 – Qtr 4	TBD
Platform Screen Doors (Pilot at 12 th St)	TBD	TBD
	Total	\$TBD

Recent On Call Professional Services - CM

Issued June 2018,
Avg. 43% SBE Commitment



- AECOM/Cooper Pegueda Management, JV, Oakland
- Allen Group/Vali Cooper, JV, San Francisco
- Ghirardelli Associates, Inc., Oakland
- HDR, Walnut Creek
- Jacobs, Oakland
- Parsons Transportation Group, Oakland
- PGH Wong, San Francisco
- PreScience, Oakland

Recent On Call Professional Services – GEC Issued February 2019, Avg. 30% SBE Commitment



- AECOM, Oakland
- HDR, Walnut Creek
- HTNB/FMG, a JV, Oakland
- Jacobs, Oakland
- Parsons Transportation Group, Oakland
- PGH Wong, San Francisco
- T.Y. Lin/Transit Systems Engineering, a JV, Oakland
- WSP, San Francisco

Thank You



Check out our Procurement Portal

<https://www.bart.gov/procurement>

BART Procurement is made up of 2 Divisions: Contracting and Purchasing.

The Contracting Division handles Services and Construction.

The Purchasing Division handles Commodities.

Contracts Division

Oji Kanu

okanu@bart.gov

510-464-6554

Purchasing Division

Detra Dillon

ddillion@bart.gov

510-464-6371

Agenda



1. INTRODUCTION
2. FACTS & FIGURES
3. MEASURE RR UPDATE
4. TCMP UPDATE
5. VTA/BART UPDATE
6. RECENT ON CALL PROFESSIONAL SERVICES
7. UPCOMING CONSTRUCTION CONTRACTS
8. UPCOMING RFP'S/RSOQ'S
9. ECONOMIC OPPORTUNITY PROGRAMS
10. PROCUREMENT PORTAL

Facts & Figures



- Elected Board of Directors – 9 districts
- 5 Counties:
 - Alameda, Contra Costa & San Francisco
 - Serves San Mateo, and soon Santa Clara
- 112 total miles
- 5 lines + Oakland Airport Line
- 48 stations
- 49,000 parking spaces
- Farebox recovery: 64%



Measure RR Update: Safe Station Access & Crowd Relief



**Station Access
Program: \$135M Total**



**Relieve Crowding
Program: \$200M Total**



Train Control Modernization Project (TCMP) Update



Core Capacity Program

Big 4 Capital Projects



45% MORE CAPACITY

Fleet of the Future

\$1,652M

425 more vehicles
(1,200 total)



Train Control Modernization

\$1.15B

\$2,584M
Fleet Replacement
Underway
775 vehicles

Hayward Maintenance Complex

\$581M



Traction Power

\$104M

5 new substations

VTA's BART Silicon Valley Extension



- Phase I - \$2.4B Project

- 10 - miles
- 2 stations
- Opening late 2019 (per VTA)

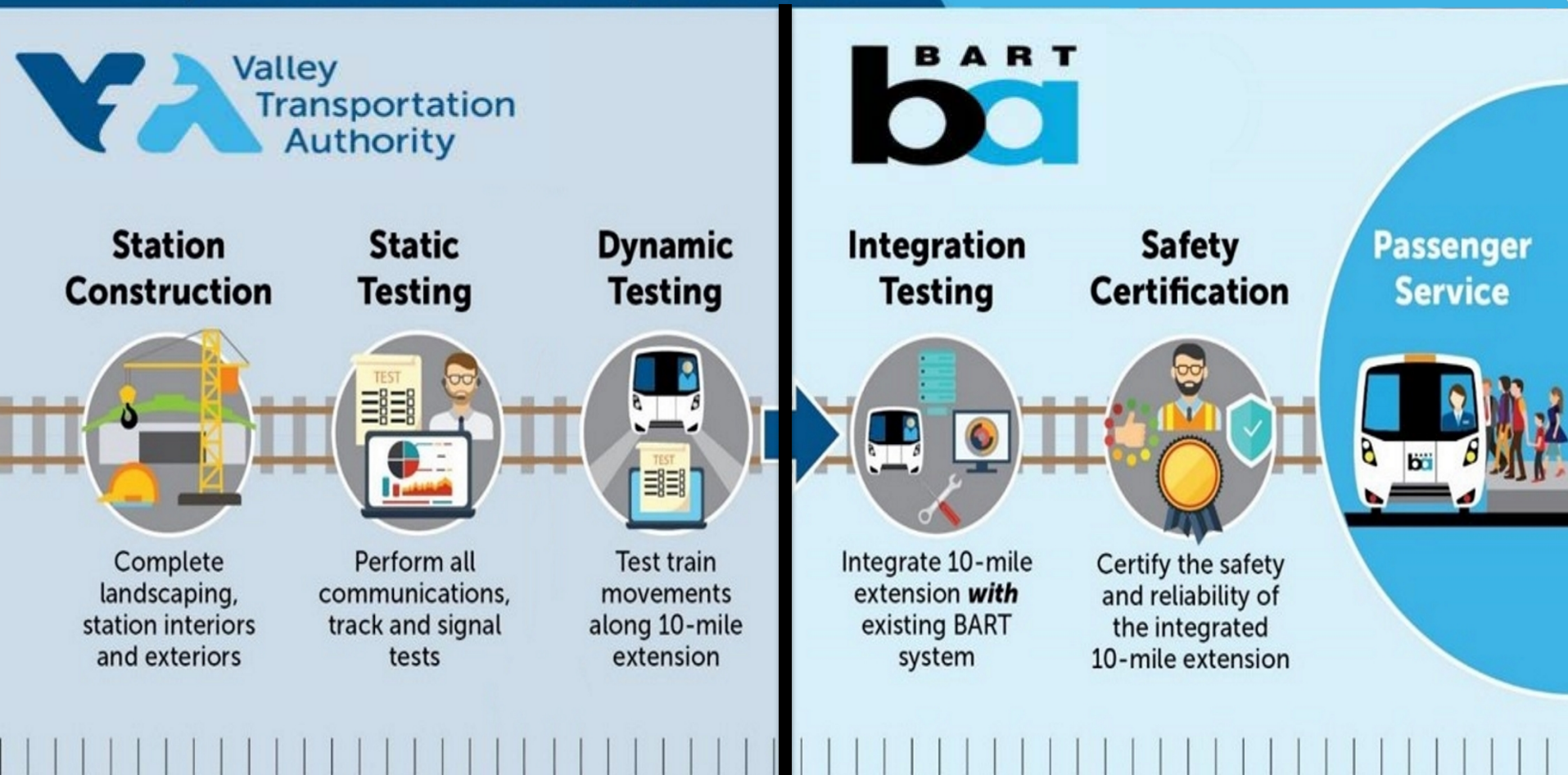
- Phase II - \$4.7B Project

- 6 - miles
- 4 Stations
- Yard Facility (200-car storage)
- Opening 2026 (per VTA)



VTA Performance & Control

BART Performance & Control



6 months

Contingent on punch list items

The background of the slide features a light blue header with a blurred image of a train on tracks. Below the header, the main area is white with faint, light gray concentric circles and dots, resembling a stylized orbital or network diagram. A small gray arrow points to the right, positioned between the inner and middle circles.

Questions?