



BART Bicycle Advisory Task Force (BBATF) Year End Report



Rick Goldman, Chair BBATF

BART Board
July 25, 2019



BBATF

BART Bicycle Advisory Task Force:

Advise BART staff and Board to improve accessibility and safety of BART system for bicyclists and their bicycles.

Officers:

Rick Goldman (SF) - Chair

Jon Spangler (AI) – Vice Chair










Katie DeLeuw (SM) – Secretary





Bicycle Access

Goal: Double bike access from 4% to 8% by 2022

Strategy	Example	Focus to date
Circulation improvements	Stair channels, accessible fare gates	
Availability of safe parking	Bike lockers, bike stations	  
Bikes on board	Commute period access, bike space on cars	 
Encouragement programs	Bike-to-Work Day, Bike share promotion	
Beyond BART boundaries	Bike sharing, support local improvements	 



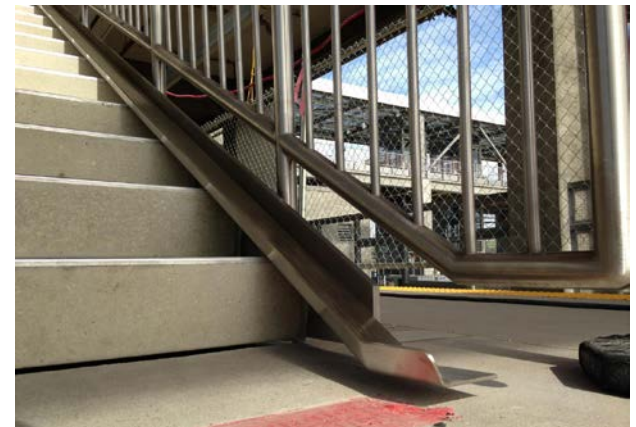
Bicycle Access

- Station Access
 - Iron Horse Trail: Dublin/Pleasanton
 - Ohlone Greenway: North Berkeley
 - Bay Trail: Coliseum
- Feedback on Irvington Station Access
- Stair Channels: Site visit to Warm Springs
- Castro Valley Bicycle Access



March 14, 2019

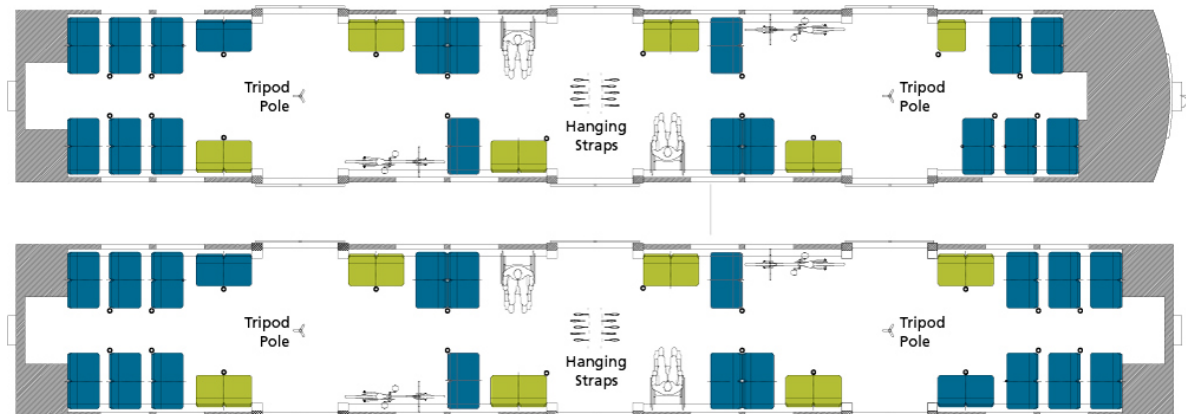
BART Board Meeting





Bicycle Access

- Dockless Mobility Devices around BART property
- Network Gap Studies (17)
 - Feedback on station specific recommendations
 - Participated in Site Studies
- Fleet of the Future
 - Frequent feedback on Bike space
 - Effort to evaluate bike racks on running trains
 - Recommended 2 flex spaces per car



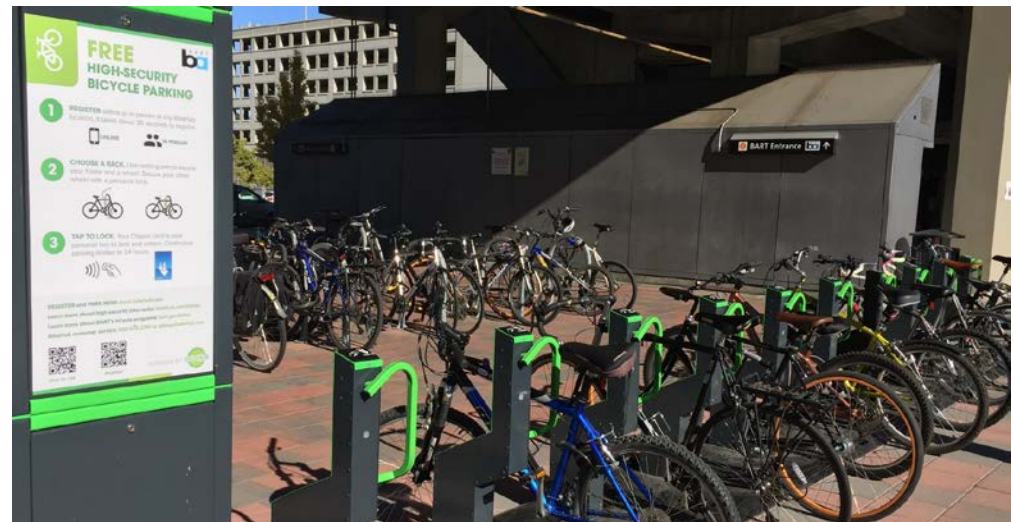
March 14, 2019

BART Board Meeting



Security and Safety

- Suggestions to improve Bike Space signage
- Bikekeep Racks Improvement
- Feedback on Bike Straps – Delivery 6/19
 - I have already used the new bike straps





Thank You

Questions?