

VTA's BART Silicon Valley Phase II Extension Project

BART Accessibility Task Force

May 25, 2023



Agenda

- Project Overview and Schedule
- Station Design & Vertical Circulation
- Station Access & Transit Connections
- Opportunities for Input & How to Stay Involved

VTA's BART Silicon Valley Phase II



- 6-mile extension (5-mile subway)
- 4 new BART stations
 - 28th Street/Little Portugal Station
 - Downtown San José Station
 - Diridon Station
 - Santa Clara Station
- Newhall Maintenance Facility







VTA & BART Partnership



Santa Clara County is not part of the BART District. A Comprehensive Agreement and an Operations and Maintenance Agreement provide a framework for the partnership.

Santa Clara Valley Transportation Authority (VTA) Responsibilities

-  Pay all costs associated with the extension
-  Contracting/Procurement
-  Construct to applicable BART/industry standards, codes, and regulations
-  Retain ownership of infrastructure

Bay Area Rapid Transit (BART) Responsibilities

-  Technical assistance
-  Operations
-  Maintenance
-  Service Planning

Five Year Look Ahead



Engineering and
Procurement

Early
Construction

Major
Construction

2023

2024

2025

2026

2027

2028

Stations Design

Request Entry into
FTA New Starts
Engineering

Anticipated Full
Funding Grant
Agreement (FFGA)

Anticipated Procurement
of Stations Contractor

Based on preliminary schedule for planning purposes.

Project Requirements and Features



Project will comply with standards and requirements (e.g., BART, ADA, VTA, Cities)

- Stations will use BART's Next Generation fare gates
- Yellow textured strip will be provided in stations including at platforms
- Accessible audible and visual messaging and announcements

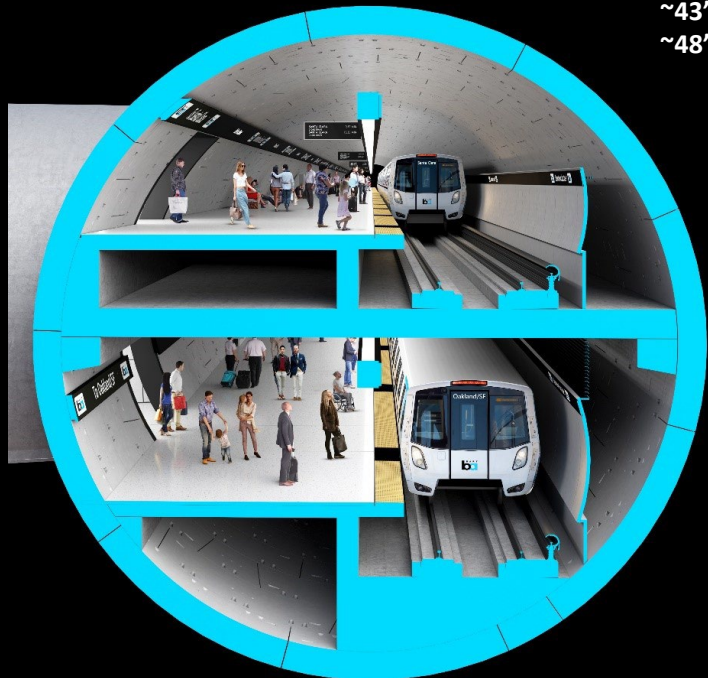


Single-bore Tunnel Configuration



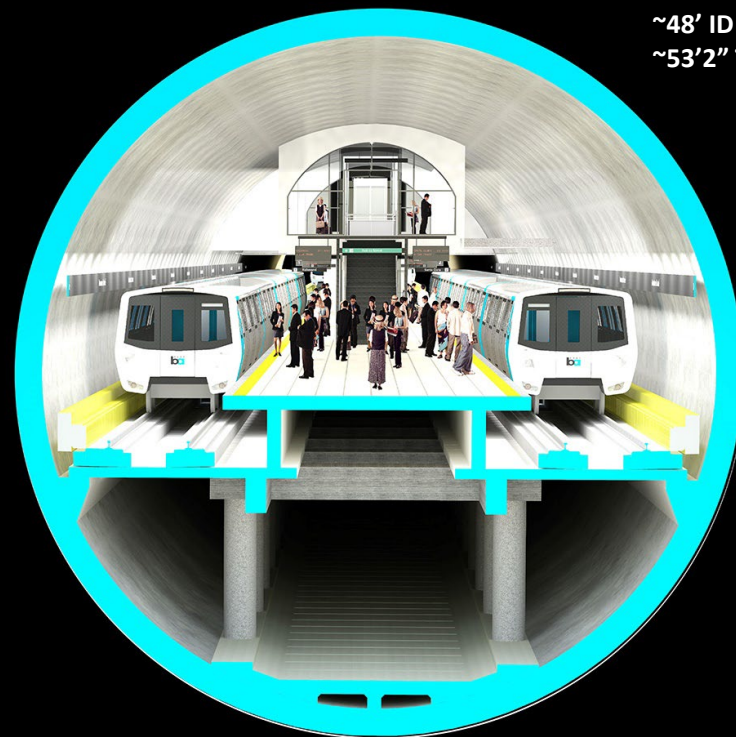
ORIGINAL DESIGN

~43' ID
~48'6" TBM



CURRENT DESIGN

~48' ID
~53'2" TBM

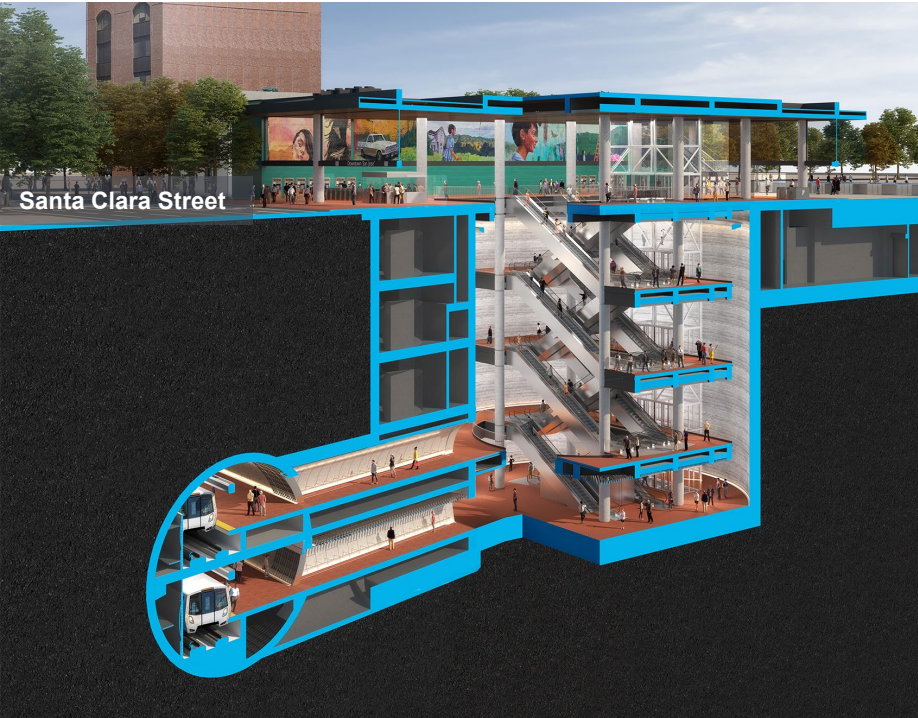


Conceptual Rendering – Subject to Change

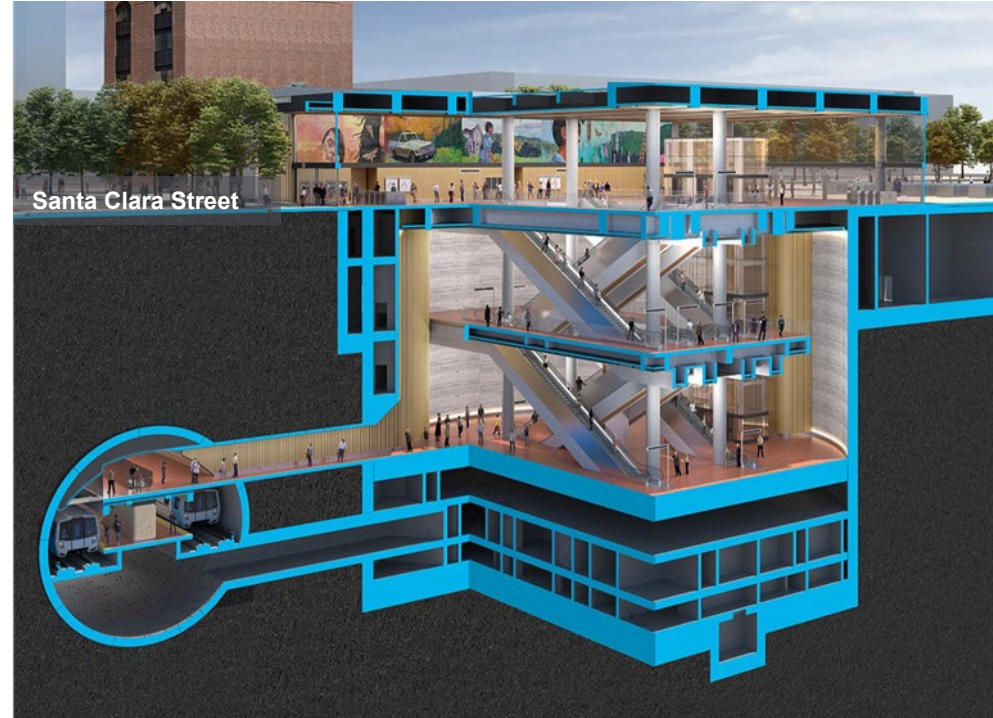
Recent Station Design Refinement



Original Design



Refined Design



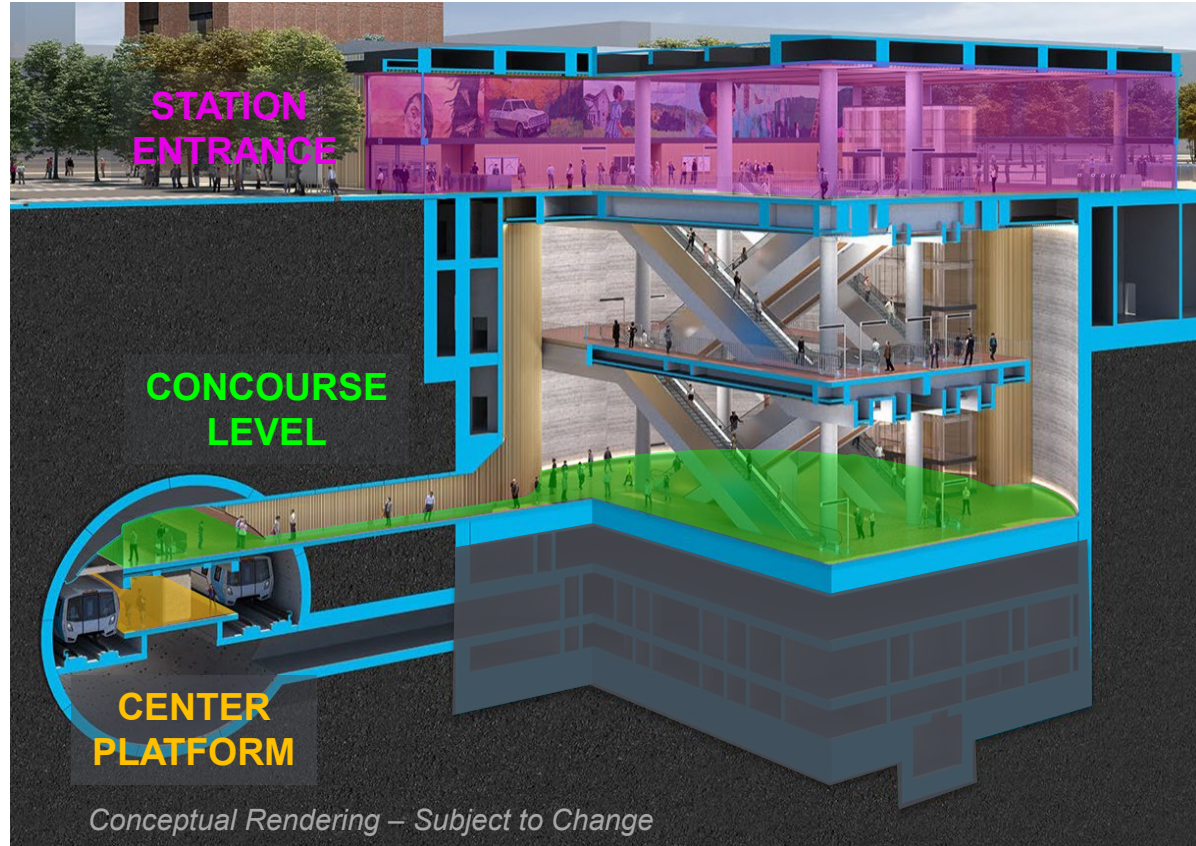
conceptual diagrams

CURRENT as of May 2023 – FOR DISCUSSION ONLY

Underground Stations: Typical Layout



- Street-level **station entrance** with faregates, station agent, add-fare machines, etc.
- **Concourse level** below ground spans from station building to underground tunnel
- **Center platform** within the tunnel provides access to trains in both directions

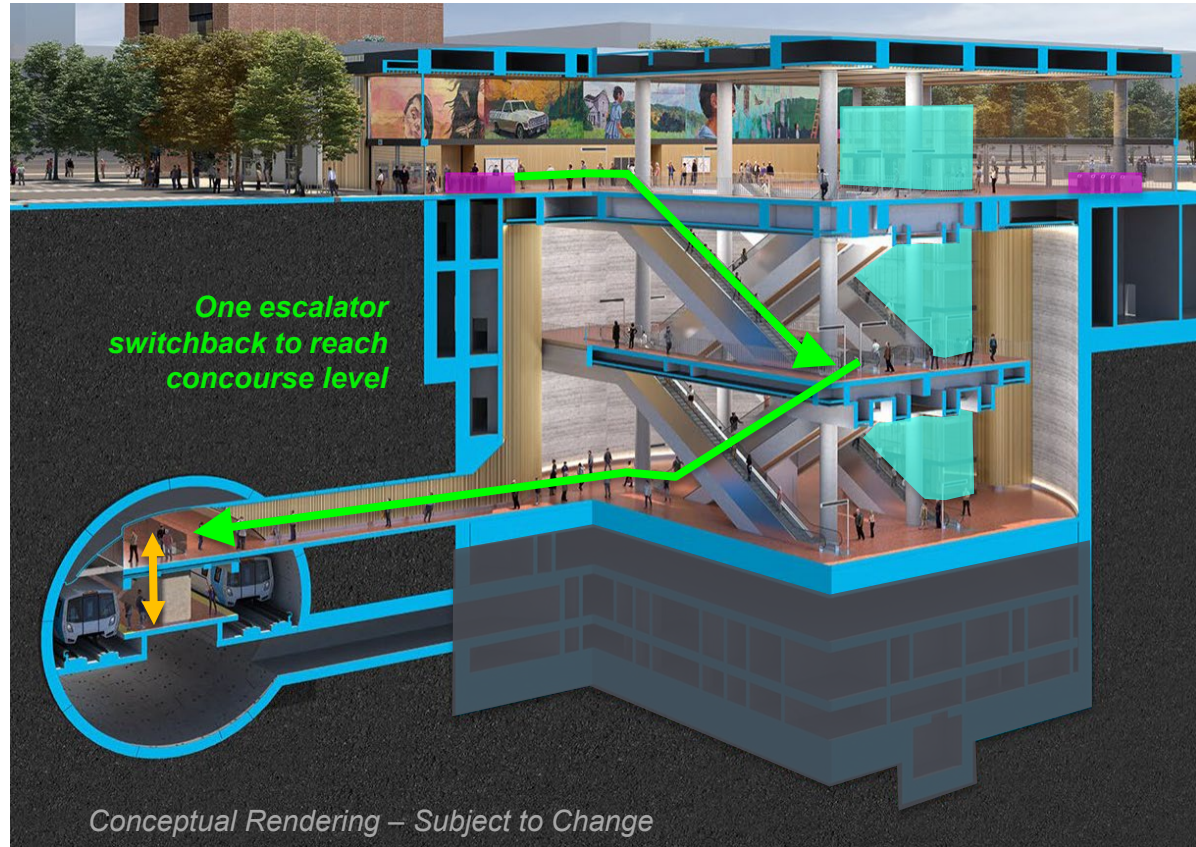


Underground Stations: Typical Circulation



- ❖ Faregates at street-level building entrances
- ❖ Escalators and stairs to access concourse level.
- ❖ High-speed elevators to access concourse level*
- ❖ Stairs and elevators* for access between concourse level and platform

**At 28th Street/Little Portugal Station, high-speed elevators will provide direct connection from street-level to platform.*



28th Street/Little Portugal BART Station Passenger Access

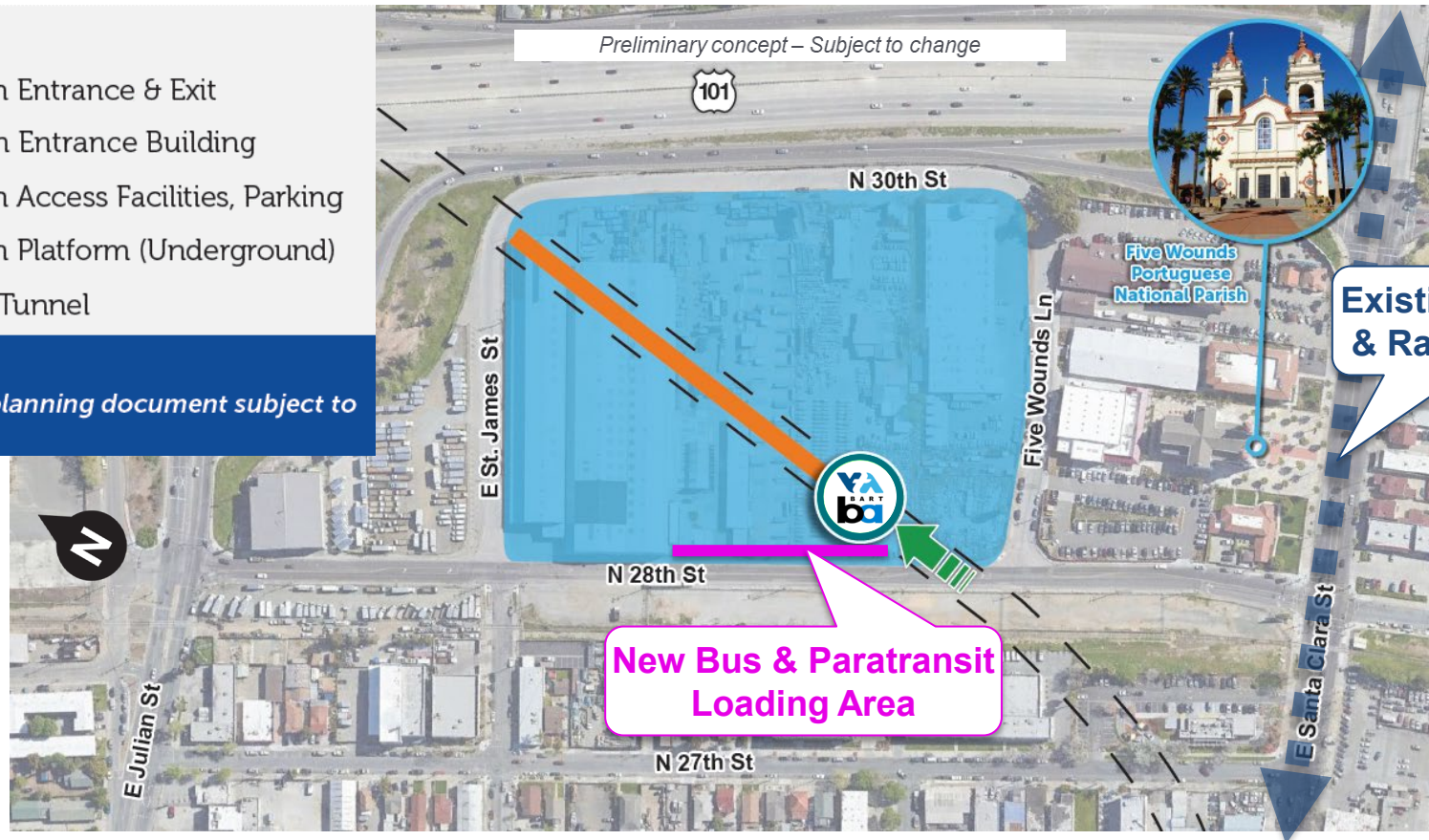


LEGEND

- Station Entrance & Exit
- Station Entrance Building
- Station Access Facilities, Parking
- Station Platform (Underground)
- BART Tunnel

NOTE:

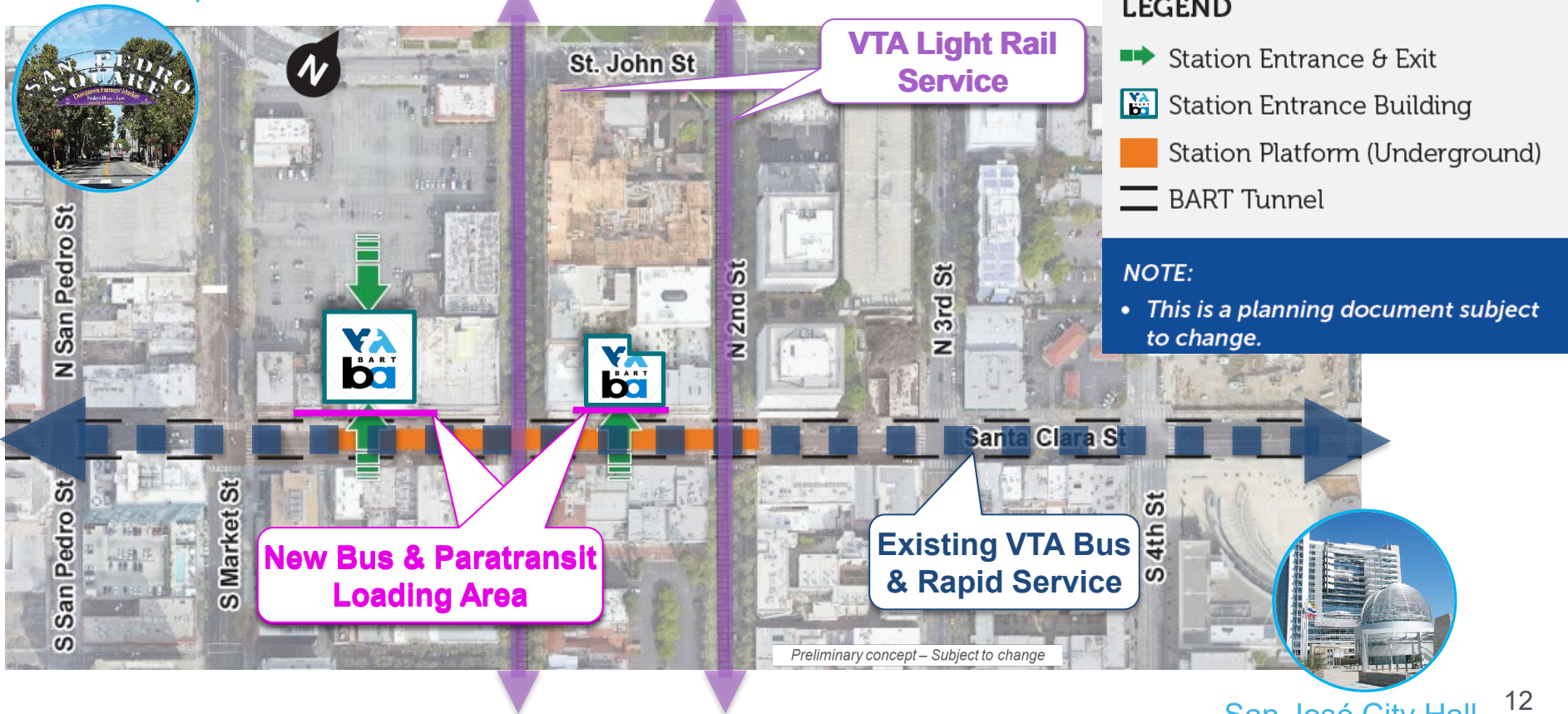
- This is a planning document subject to change.*



Downtown San José BART Station Passenger Access



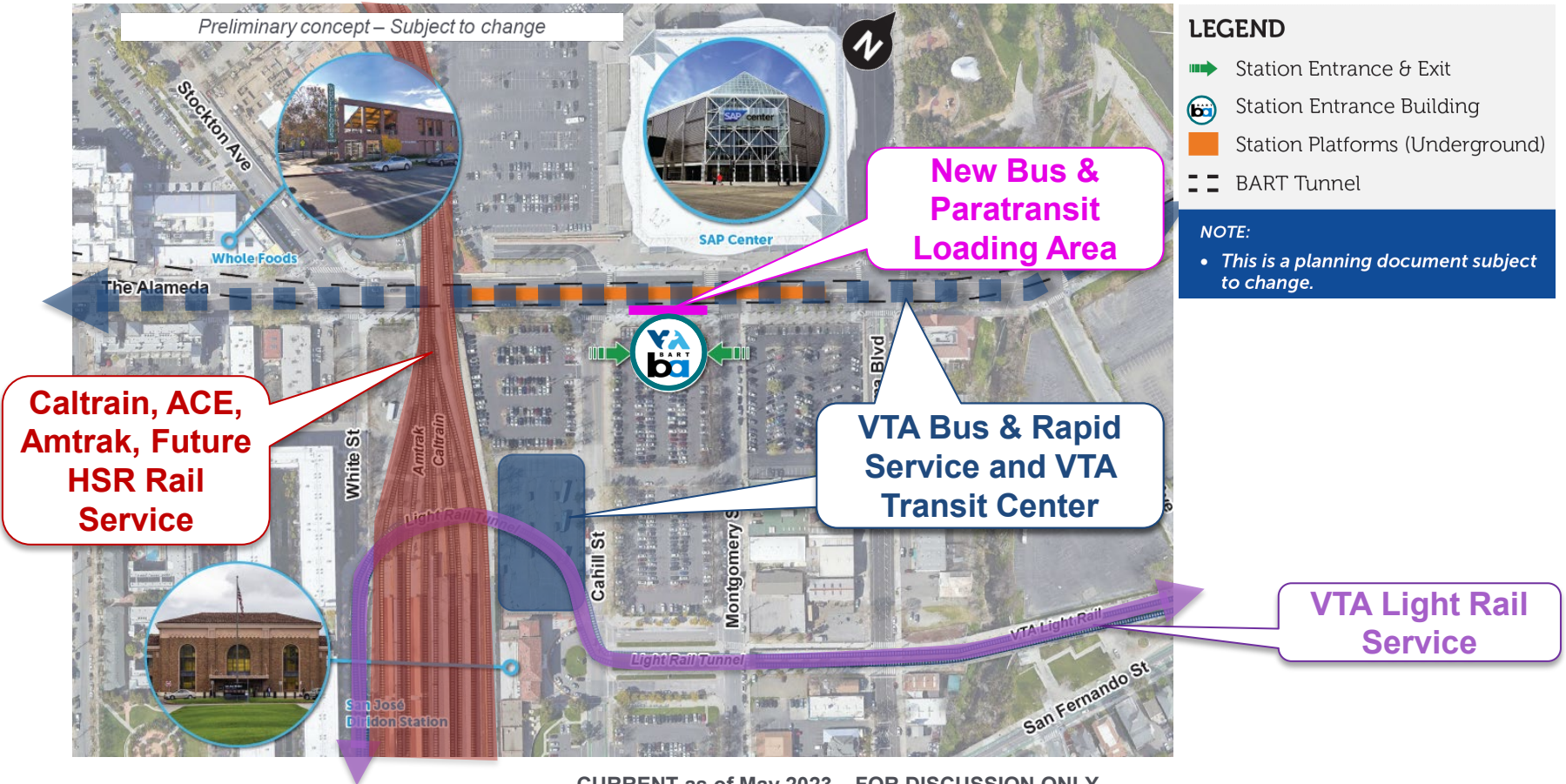
San Pedro Square



CURRENT as of May 2023 – FOR DISCUSSION ONLY

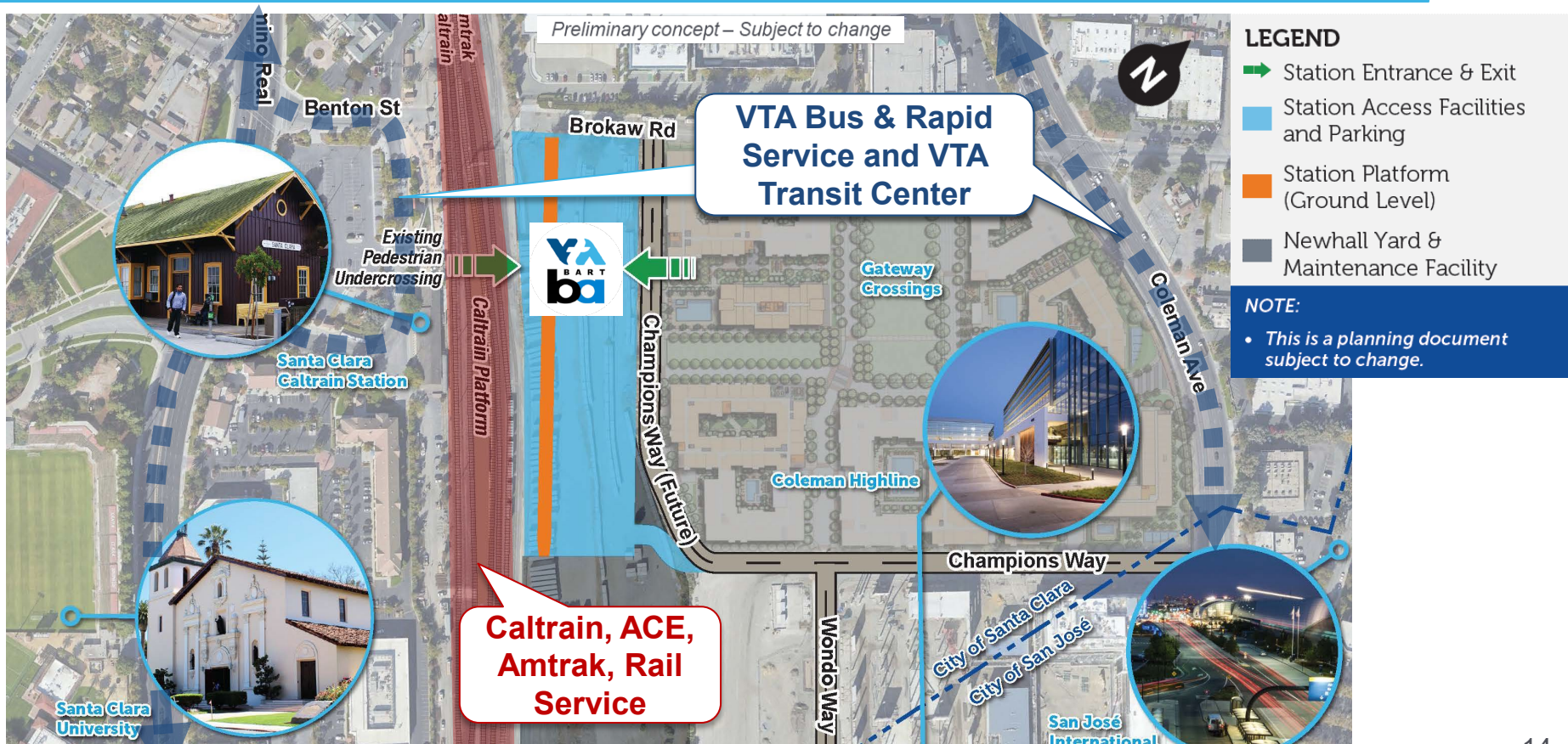
San José City Hall

Diridon BART Station Passenger Access

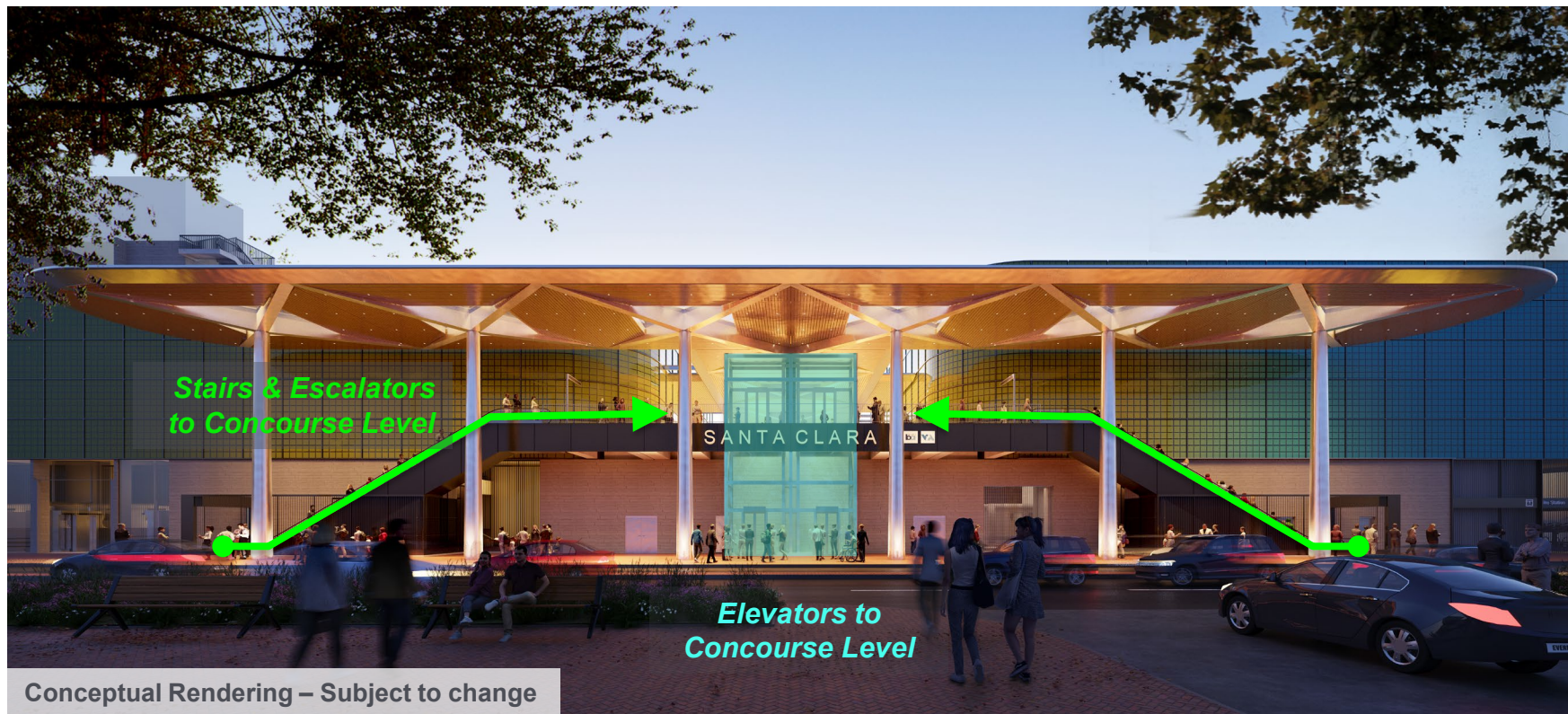


CURRENT as of May 2023 – FOR DISCUSSION ONLY

Santa Clara BART Station



Santa Clara BART Station East Entrance



Santa Clara BART Station West Entrance



Conceptual View of Santa Clara BART Station Concourse



Summary of Vertical Circulation for VTA’s BART Phase II Stations		Number of Elevators	Number of Escalators	Stairs
28th Street/Little Portugal Station				
	Street to concourse	2	4	✓
	Concourse to platform		0	✓
Downtown San José BART Station (primary entrance / secondary entrance)				
	Street to concourse	3 / 4	4 / 0	✓ / 0
	Concourse to platform	2 / 2	0	✓ / ✓
Diridon BART Station				
	Street to concourse	2	4	✓
	Concourse to platform	2	0	✓
Santa Clara BART Station				
	Street to concourse	2	4	✓
	Concourse to platform	2	4	✓

How do I learn more about the project?



Interactive Efforts



Tabling events throughout the year around the station areas



Community Working Group meetings



Public Meetings



Community Group Meeting Outreach

- Reach out to have us present updates at your local Community Group/Neighborhood Association/etc.
www.vta.org/about/subscribe

Resources



VTA's hotline number: **408-321-2345**

- Call to learn more about specific project efforts and provide your feedback



VTA's website: vta.org/bart

Sign up to get alerted on nearby construction and find Informational Factsheets, Newsletters, and Blog Posts



Email questions to: vtabart@vtabsv.com

Social Media



Twitter: [@bartsv](https://twitter.com/bartsv)
Facebook: [@bartsv](https://facebook.com/bartsv)
Instagram: [@ascvta](https://instagram.com/ascvta)