

15NU-145

Accessibility Improvement Program- Phase 2

BART Accessibility Task Force
(BATF) – January 26, 2023
Ahmad Rassai (AR)

Project Locations

Base Bid-

Macarthur (K30), San Leandro (A40), Hayward (A60), Fruitvale (A20), Bay Fair (A50), and Fremont (A90) Stations



Scope of work – Major Elements

1. Civil (Majority of Scope):

- a. Demo and Re-construct existing sidewalks and curb ramps to meet ADA requirements.

2. Metal (Second Largest Scope):

- a. Remove existing and install new cane detection devices.
- b. Remove existing handrails and install new handrails on stairs
- c. Provide and install new stainless steel panel sheets and trim

3. Electrical/ Communication:

- a. Remove existing courtesy phones and install new District Furnished courtesy phones to improve accessibility. Provide pertinent components to support phone installation.
- b. Coordinate with PTS to remove existing phones and TTY devices and install new public phones and TTY devices to improve accessibility. Provide pertinent components to support phone and TTY device installation.
- c. Courtesy phones and public phones will be replaced to provide adequate height and access for ADA. Existing data cables will be re-used. Splices and extensions may be required. Review Electrical Drawings
- d. Lighting fixtures where required will be replaced with new fixtures. Existing wires will be re-used. Splices and extensions may be required. Review Electrical Drawings

4. Specialties:

- a. move existing and re-install new signs and illuminated phone cube sign.

5. Temporary Facility and Control*

6. Other Miscellanies work as identified in the Contract Specs Section 01 11 00 and Contract Drawings

Contract Duration

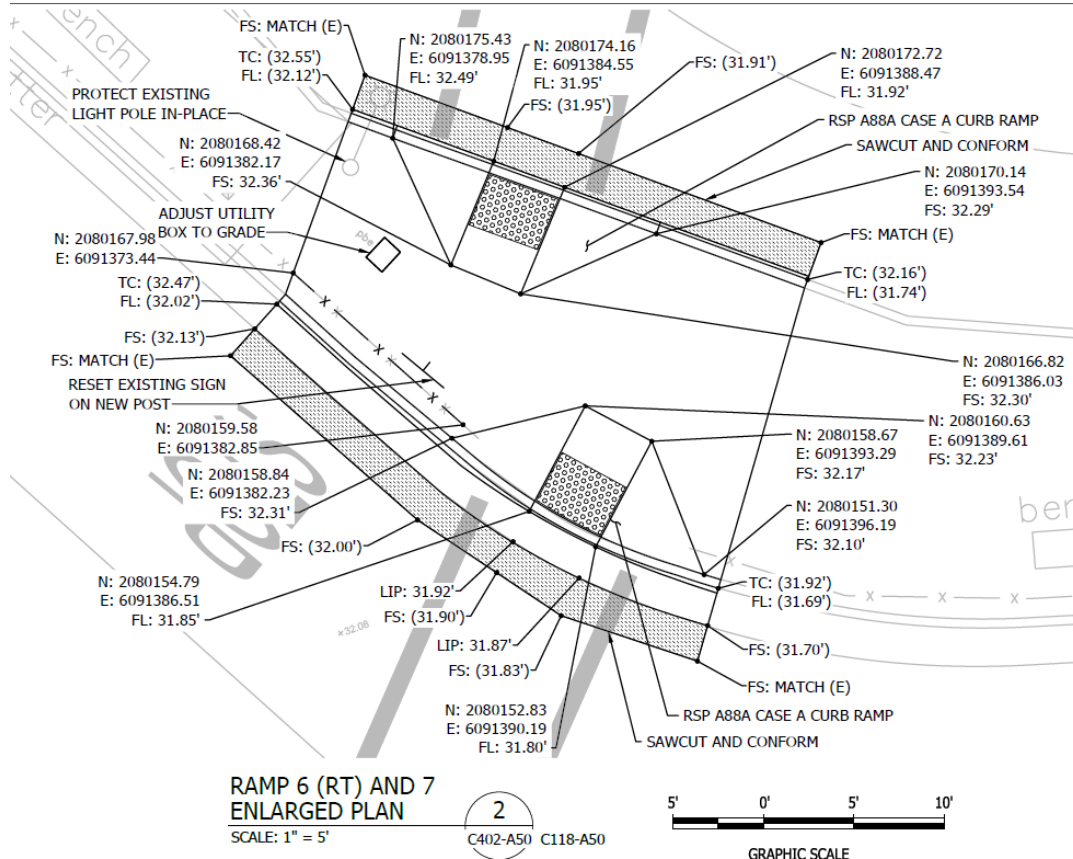
- **440 Days from NTP.** This duration includes all pre-construction activities which may take up to 60 Days to complete before any field work.
- **If Bid Option 4 is exercised, 60 Days** will be added to the Contract Duration
- No time extension for any other Bid Options if exercised

Example for Civil Scope

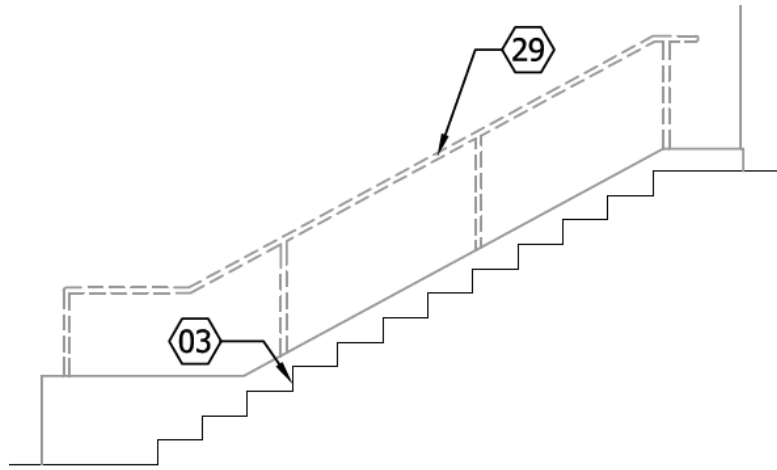
PROVIDE 2' WIDE ASPHALT CONCRETE. THICKNESS AS REQUIRED TO CONFORM EXISTING PAVEMENT SURFACE TO NEW LIP OF GUTTER.

CONSTRUCT CONCRETE SIDEWALK AND CURB RAMP (WITH CURB AND GUTTER). DOWEL NEW CONCRETE TO EXISTING CONCRETE. SEE CONSTRUCTION DETAILS DRAWING C501 AND BART BFS CS06.

RESET EXISTING SIGN ON NEW POST WITH A MINIMUM OF 84" CLEARANCE FROM FINISHED GRADE TO BOTTOM OF SIGN.

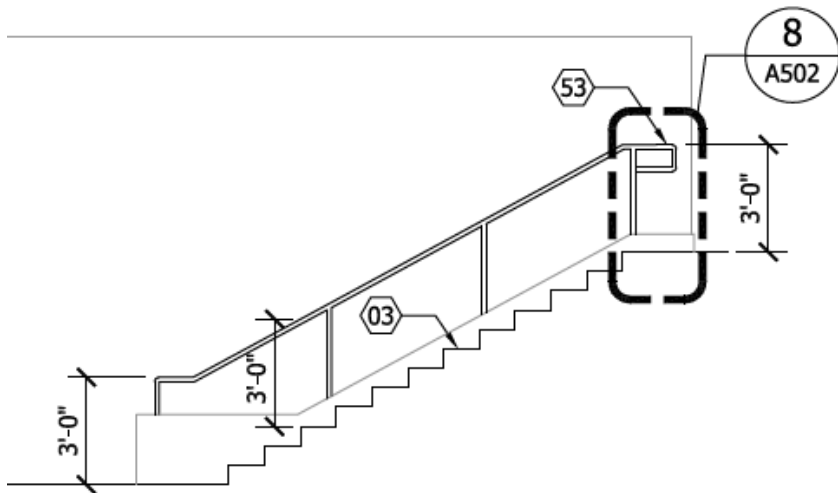


Example for Metal



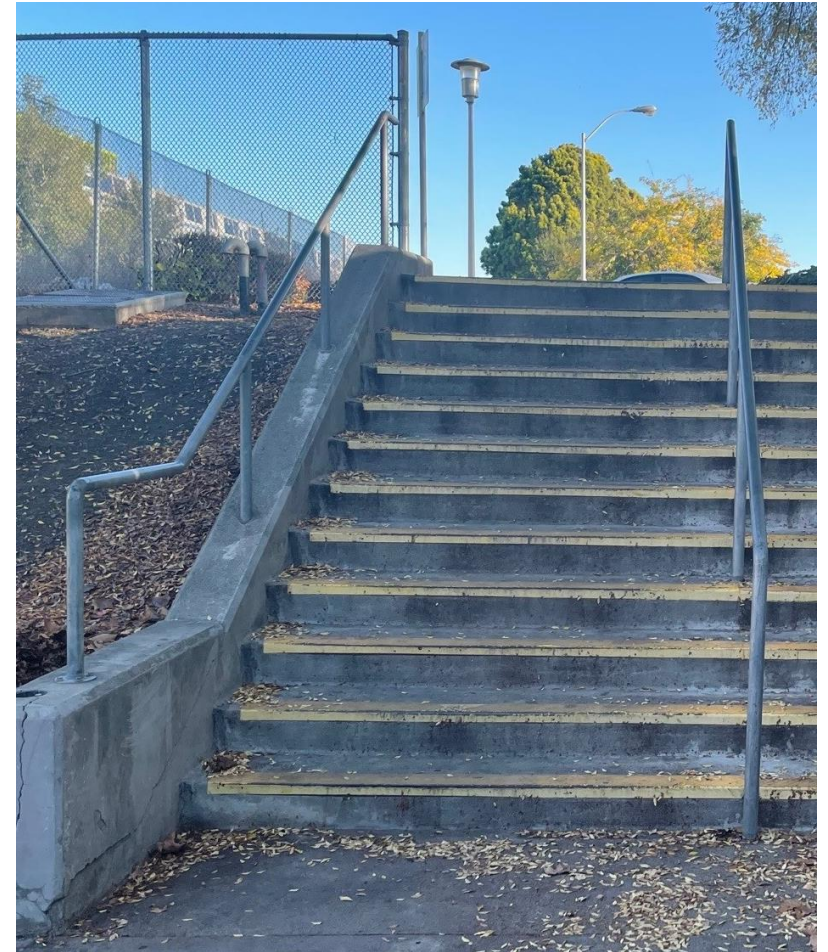
SHEET KEYNOTES:

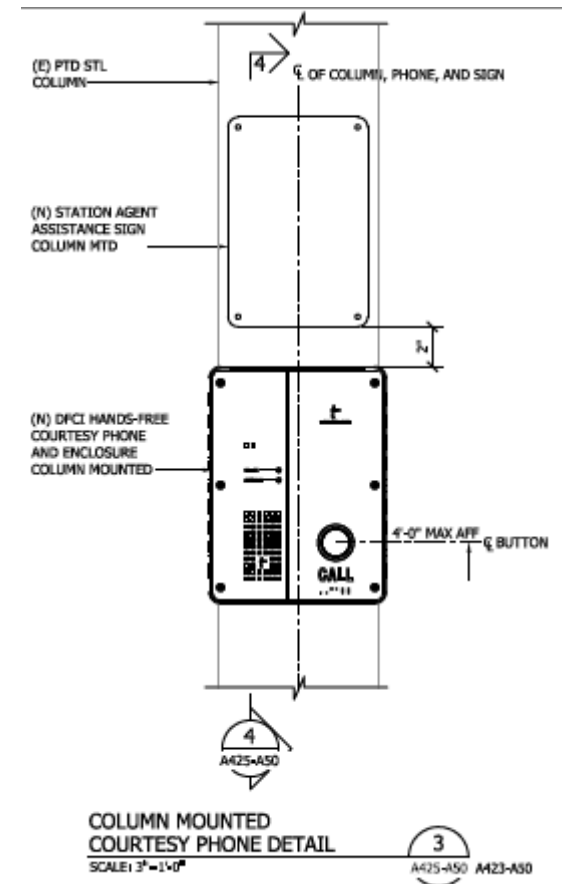
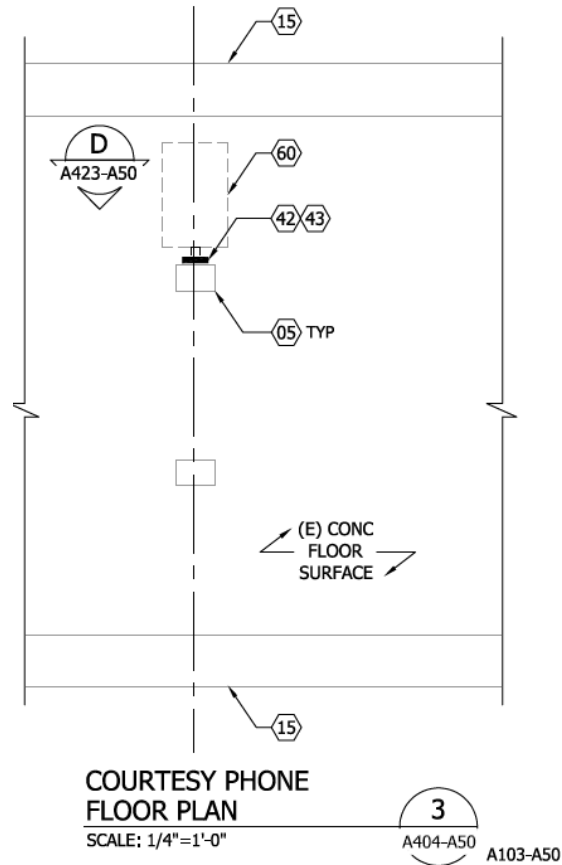
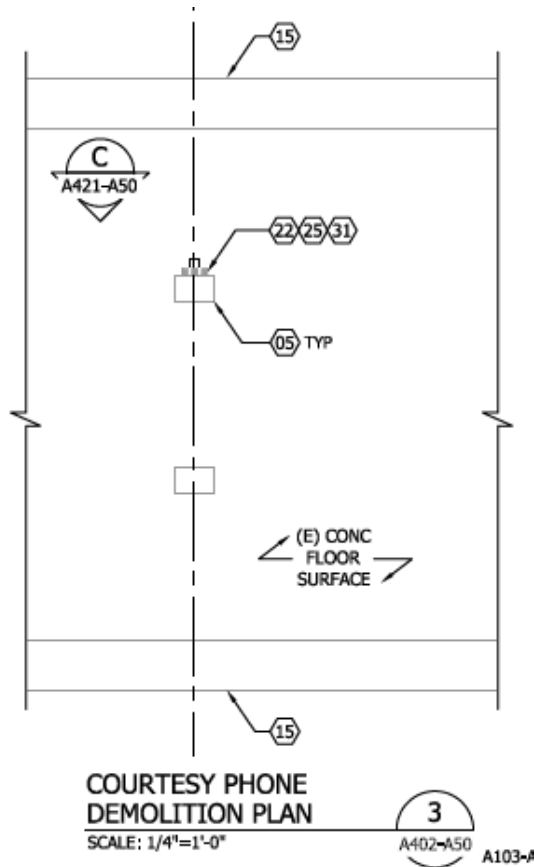
- 03. (E) STAIR
- 29. REMOVE (E) HANDRAIL



SHEET KEYNOTES:

- 03. (E) STAIR
- 53. INSTALL (N) ST STL HANDRAIL





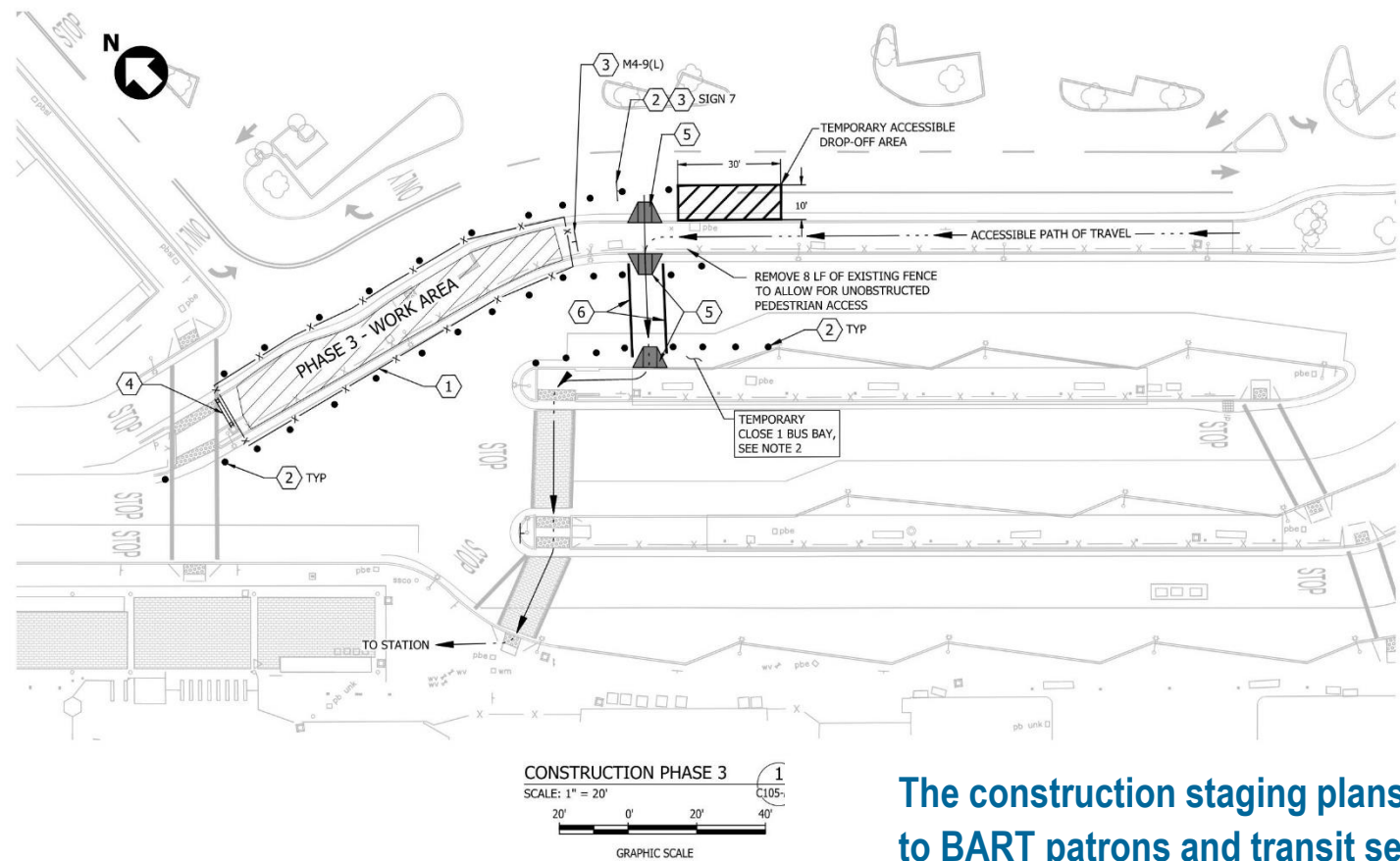
22. REMOVE (E) PLAQUE SIGN
25. REMOVE FOR SALVAGE (E) COURTESY HANDSET PHONE
31. REMOVE (E) CANE DETECTION

43. INSTALL (N) HANDS-FREE COURTESY PHONE,SURFACE MOUNTED, DFCI

Overview of the Contract Drawings



Phasing Plan – Bay Fair



GENERAL SHEET NOTES:

1. FOR CONSTRUCTION CIVIL SITE PHASING NOTES AND OTHER WORK REQUIREMENTS, SEE SHEET C005.
2. CONTRACTOR TO COORDINATE BUS BAY CLOSURES WITH COUNTY TRANSIT AND BART CUSTOMER ACCESS DEPARTMENTS.
3. ANY PARKING SPACE IN A BART FEE PARKING LOT, THE CONTRACTOR MUST COORDINATE WITH BART TO POST 72 HOUR SIGNS PRIOR TO CONSTRUCTION OR CLOSURE.
4. PARKING SIGNS SHALL BE PLACED IN EACH SPACE 24 HOURS PRIOR TO CLOSURE.

#	TEMP WORK ITEMS (THIS SHEET)	QTY	UNIT
1	PROVIDE TEMP CHAIN LINK FENCE	257	LF
2	PROVIDE TEMP DELINEATORS (10' MAX SPACING)	34	EA
3	PROVIDE TEMP SIGN (SEE SHEET C005)	2	EA
4	PROVIDE TEMP TYPE II BARRICADE W/ SIGN	1	EA
5	PROVIDE TEMP ACCESSIBLE RAMP (SEE C005)	3	LF
6	PROVIDE TEMP CROSSWALK STRIPING	52	LF
7	PROVIDE TEMP ACCESSIBLE PARKING STRIPING	170	LF

* PLACE TEMP FENCE A MAXIMUM OF 5' FROM WORK AREA OR AS NOTED.
** TEMP DELINEATORS TO BE AT 10' MAXIMUM SPACING.
*** TEMP SIGN TO BE MOUNTED ON EX. POLE OR NEW TEMP POST.

PHASE 3 CONSTRUCTION

1. CONSTRUCT ACCESSIBLE CURB RAMP AND LANDING REPLACEMENT.
2. CONSTRUCT CONCRETE SIDEWALK.
3. CONSTRUCT PERMANENT FENCE.
4. REINSTALL SIGNS.
5. CONSTRUCT AC PAVEMENT AND ANY OTHER RELATED ITEMS WITHIN THE WORK AREA.
6. PROVIDE STRIPING.

The construction staging plans are provided to minimize the impacts to BART patrons and transit services at the stations. Contractor must plan their work accordingly. Review Section 01 12 19

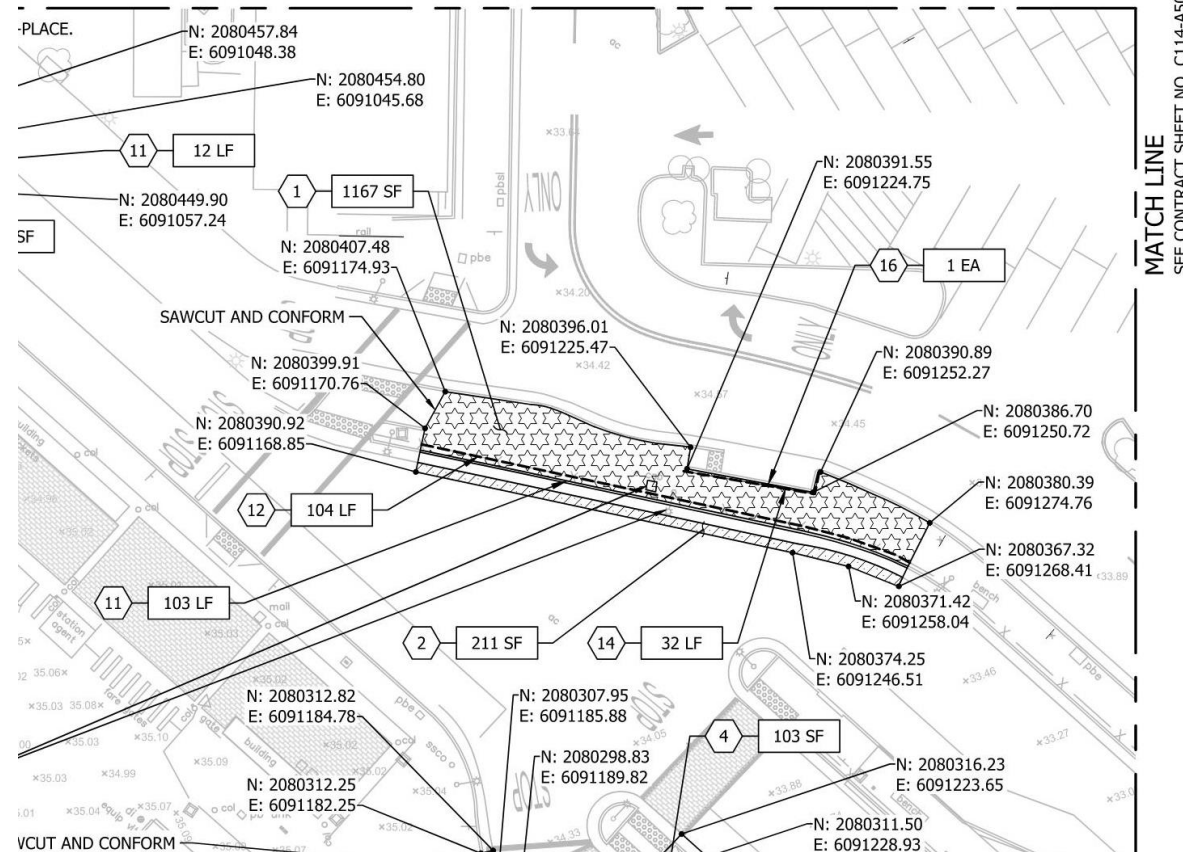
Quantity References



Estimated Quantities

1. Drawing provided dimensions and square footage for reference.
2. Attachment 01 20 00-A “Example of SOV” and Attachment 01 20 00-B “Estimated QTY” also gave good references.
3. DFM- Included detailed breakdown for DFM (Courtesy Phone) with QTY by the station under Attachment 01 64 1-A

Estimated Quantities on Drawings



GENERAL SHEET NOTES:

1. FOR ABBREVIATIONS AND SYMBOLS, SEE SHEETS C001 AND C002.
2. FOR GENERAL NOTES AND WORK LEGEND, SEE SHEET C003.
3. FOR SURVEY CONTROL, SEE SHEET C102-A50.
4. DEMOLISH EXISTING CONCRETE TO FURTHEST SCORE AND JOINT OR AS DIRECTED BY ENGINEER.
5. ALL CURB RAMPS TO HAVE CURB, GUTTER AND 2 FEET AC PAVEMENT REMOVED.

SHEET KEYNOTES:

1. REMOVE CONCRETE SIDEWALK.
2. REMOVE A MINIMUM OF 3" THICK BY 2' WIDE PAVEMENT SECTION.
4. REMOVE CURB RAMP (INCLUDING CURB AND GUTTER) AND CONCRETE SIDEWALK.
11. REMOVE EXISTING CURB AND GUTTER.
12. REMOVE CHAIN LINK FENCE.
13. REMOVE EXISTING TRASH RECEPTACLE AND STORE FOR REINSTALLATION.
14. REMOVE CURB MOUNTED GUARDRAIL.
16. REMOVE EXISTING SIGN AND STORE SIGN PANEL FOR REINSTALLATION.

Ref: Drawing Sheet C113-A50
(Bay Fair Station Demolition Plan)

Attachment 01 20 00-B “Estimated QTY”

See the sample below:

X. Exterior Improvements				
44	02 41 00	Remove existing concrete curb ramps and landings	SF	438
45	DIV 3, 31, 32, 33	Construct new sidewalk and dowel into existing concrete	SF	6094
46	32 17 26	Provide and install truncated domes	SF	150
47	02 41 00	Remove existing 12" thick pavement section	SF	438
48	DIV 3, 31, 32, 33	Provide and install new 12" thick asphalt concrete	SF	440
49	02 41 00	Remove existing 3" thick x 2 feet wide pavement section	SF	438
50	02 41 00	Remove existing concrete curb and gutter	LF	605

Attachment 01 64 13-A “District- Furnished Materials (DFM)”

The Estimated quantity of DFM (Courtesy Phone) is listed by the station under Attachment 01 64 13-A.

Phone Type	ETP-500-C Courtesy Phone Only	ETP-SM-1-SS Surface Mounted Enclosure Only
FRUITVALE (A20)		
Concourse	1	0
Platform	6	6
SAN LEANDRO (A40)		
Concourse	3	3
Platform	6	6
BAY FAIR (A50)		
Concourse	1	1
Platform	4	4
HAYWARD (A60)		
Concourse	3	2
Platform	8	8

BART will furnish 82 TalkAPhone ETP 500 series courtesy phones and 49 standard phone enclosures for the Contractor to install. Custom enclosures where required must be provided and installed by the Contractor. Review Architectural Drawings

Q&A

