



El Cerrito Plaza



BART POLICE DEPARTMENT (BPD) PUBLIC SAFETY UPDATE

September 22, 2022



THE BART POLICE DEPARTMENT

We have created and implemented strategies that have kept the agency at the forefront of innovative and progressive policing.

Our nation is experiencing influential social movements, demographic changes, environmental shifts, and technological advances that require us to come together and identify the department's goals and strategies.

BART PD MISSION

The mission of the BART Police Department is to ensure a safe environment within our transit system, reduce crime through a highly visible police presence, and to promote public confidence by working in partnership with our stakeholders and the communities we serve.

BART PD VISION

To be the leader in innovative policing, establishing BART as the safest transit system in the nation.

AGENDA

ZONE OVERVIEW

CALLS FOR SERVICE

VACANCIES/RECRUITMENT

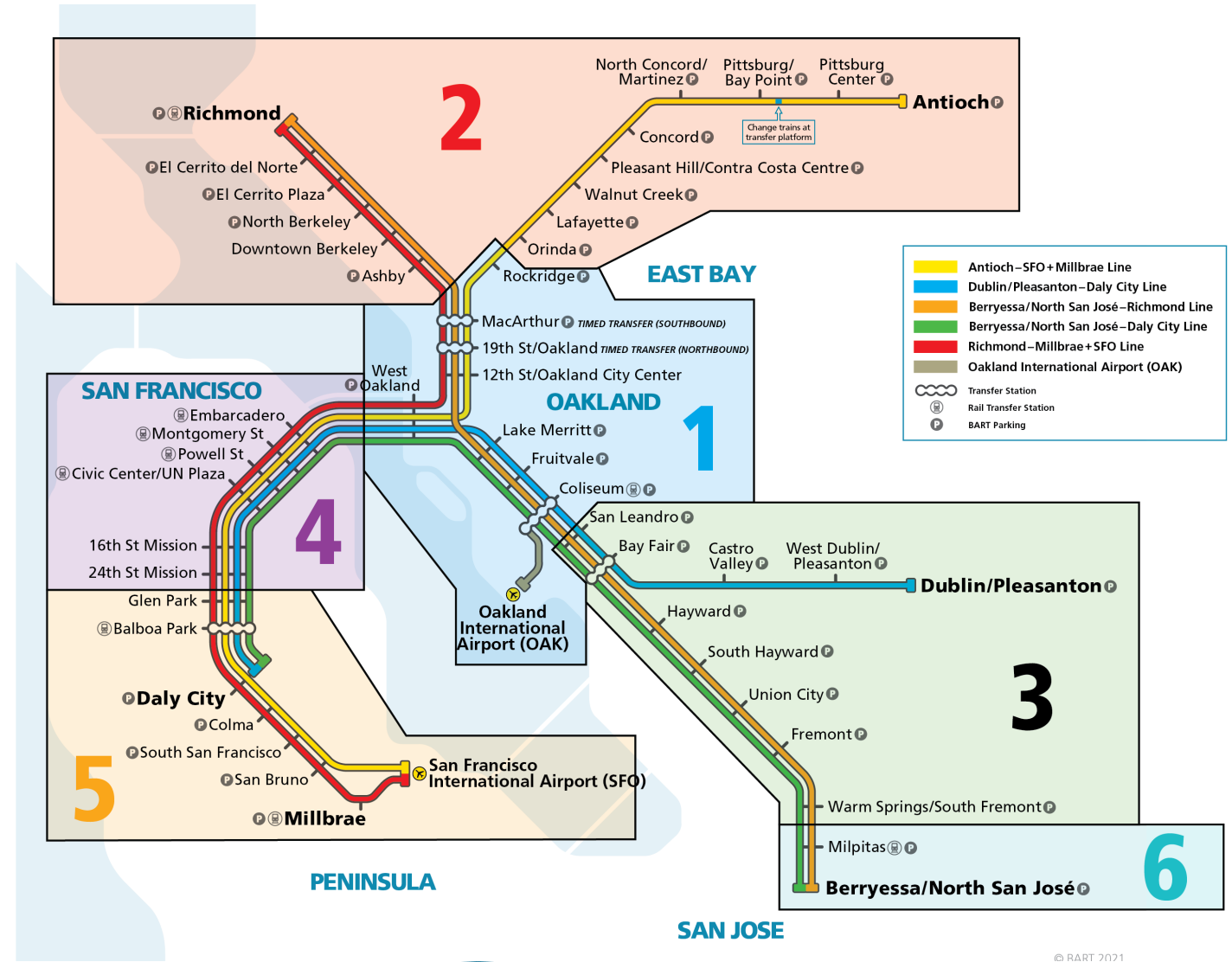
MANDATORY OVERTIME

CREATIVE SOLUTIONS FOR PRESENCE

KEY WINS FOR BPD

ZONE OVERVIEW

BART PD operates in five counties (**Alameda, Contra Costa, San Francisco, San Mateo, and Santa Clara**) with 131 miles of track and **50 stations**.



© BART 2021

BPD ZONE COMMANDERS

Zone 1: Lt. Spears

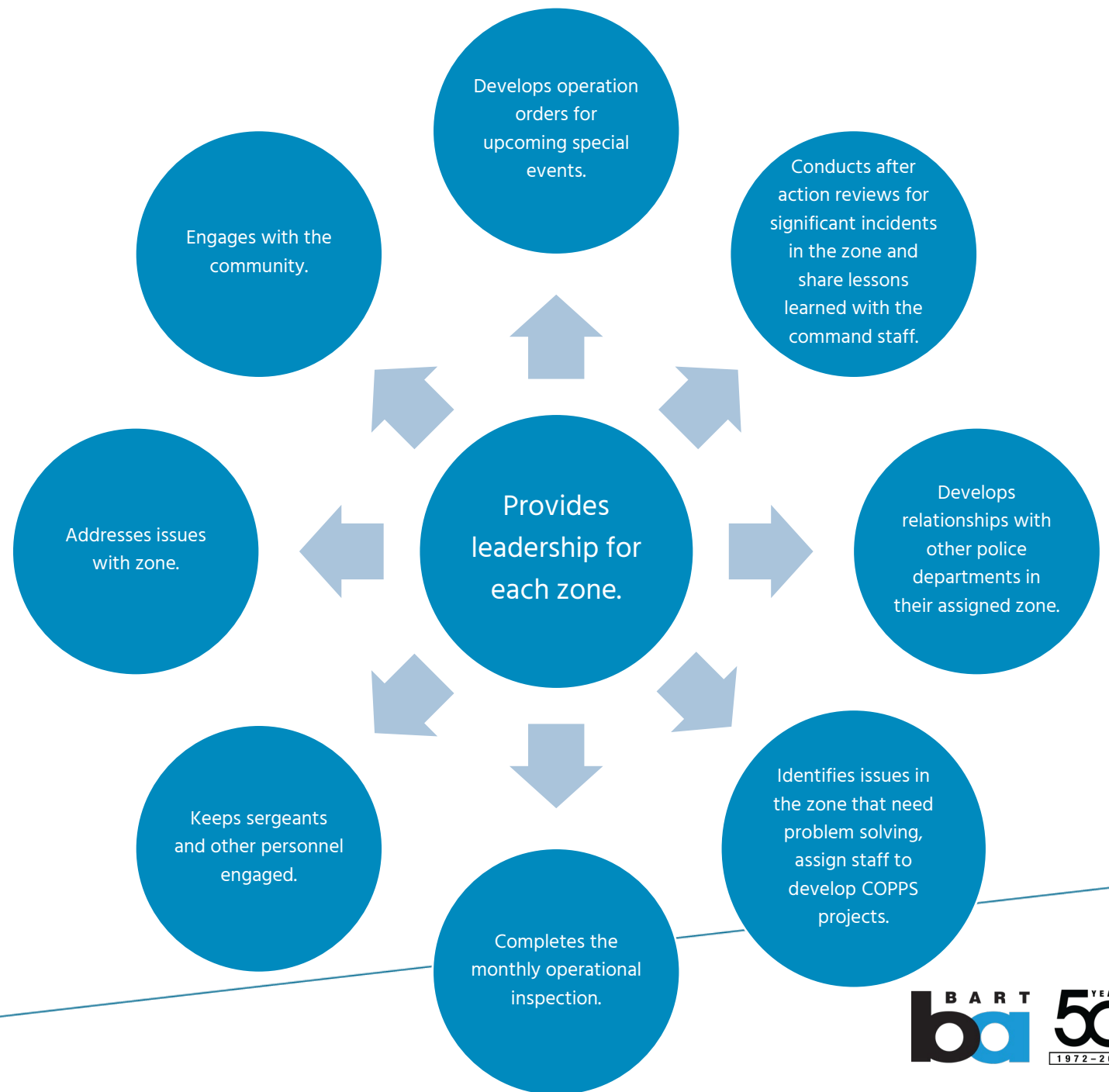
Zone 2: Lt. Power

Zone 3: Lt. Sekhon

Zone 4: Lt. Enriquez

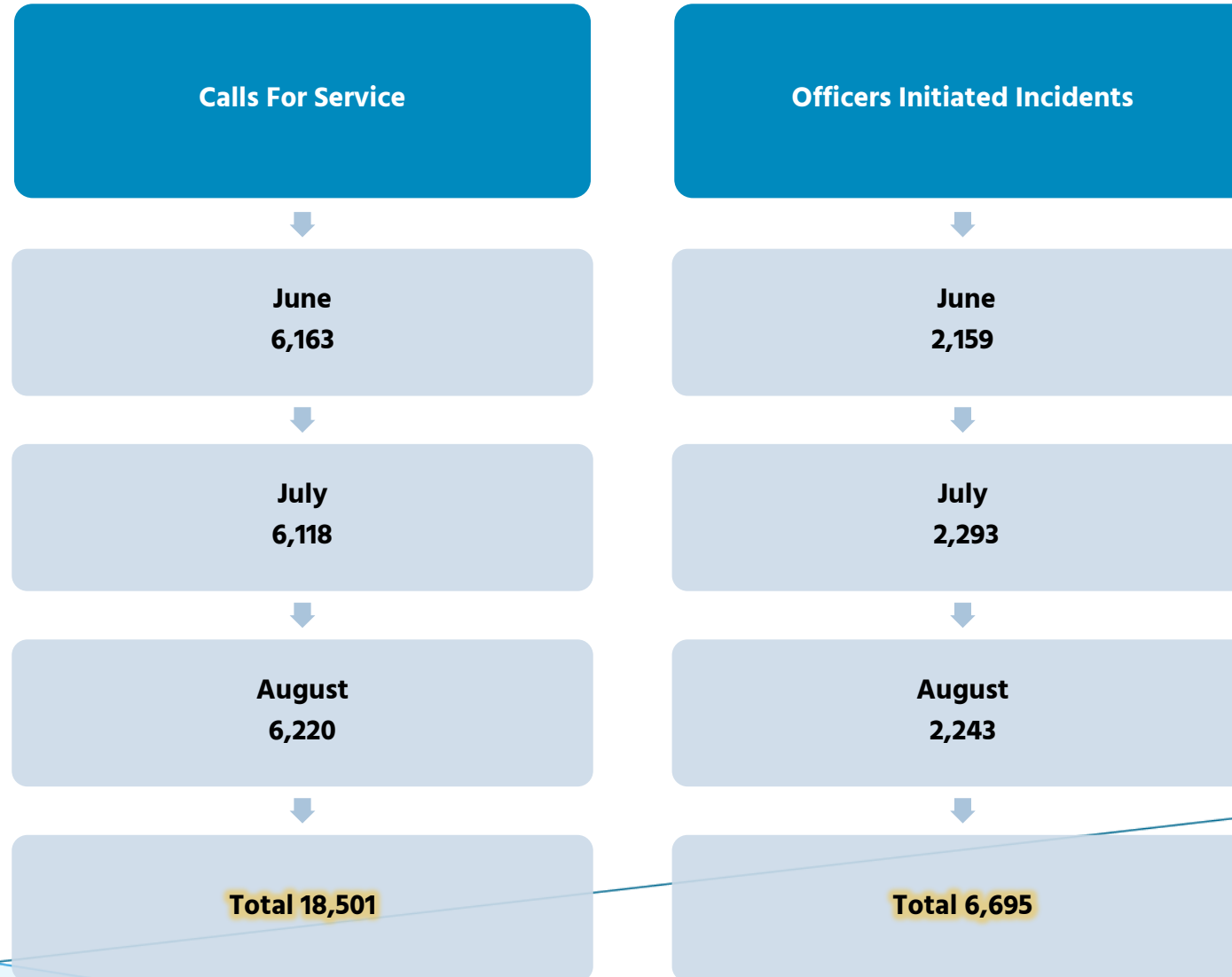
Zone 5: Lt. Joseph

Zone 6: Lt. Martinez



A RESPONSIVE AND PROGRESSIVE APPROACH

25,000 Instances of Police Related Matters



PATH TO PRESENCE

BART PD is responsible for providing police visibility on trains, in stations, and responding to calls for service.

BPD relies on a data driven approach to determine deployment strategies.

Community Policing

- We use partnerships with community stakeholders to bring resources to address problems that may be outside the range of traditional law enforcement.

Crime Analysis

- We review crime data to focus efforts and adjust deployments.
- Zone Commanders are accountable for developing strategies to address issues.

Presence

- We implement plans that involve Sworn and Civilian staff to provide a visible presence, walking trains and stations, patrolling parking areas, and engaging with employees and the public.

VACANT POSITIONS

- ☐ Lieutenant— 1
- ☐ Sergeants – 4
- ☐ Police Officers – 26
- ☐ Fare Inspection Officers – 8
- ☐ Community Service Officers – 5
- ☐ Ambassadors – 0
- ☐ Revenue Protection Guard – 3
- ☐ Police Admin. Specialists – 5
- ☐ Crisis Intervention Specialists – 3
- ☐ Dispatchers – 4

We are currently interviewing for the following positions:

- ✓ Police Officers – Continuously
- ✓ Crisis Intervention Specialists – Continuously
- ✓ Fare Inspection Officers – Sept.
- ✓ Revenue Protection Guards – Sept.
- ✓ Police Administrative Specialists – Sept.

**** Please note, we have candidates that are currently going through the background process that will fill vacant positions.****

RECRUITMENT



WE ARE ACTIVELY RECRUITING FOR ALL POSITIONS, SWORN AND NON-SWORN EMPLOYEES.

- These challenges are not unique to our department.
- This is a challenge throughout the country and especially in the Bay Area with its high cost of living.
- We are prioritizing recruitment through aggressive public outreach and a \$15,000 hiring bonus. But challenges brought on by attrition are making it difficult for us to reduce sworn vacancies.

MANDATORY OVERTIME

- Due to the challenges in filling patrol vacancies current sworn staff are working hundreds of mandatory overtime shifts each month.
- These shifts are necessary to provide the level of police presence required to protect our riders.
- In some cases, there are more shifts than employees available to volunteer.
- From March through September of this year BPD officers were required to work 527 involuntary overtime shifts and sergeants filled another 238 shifts.

CREATIVE SOLUTIONS FOR PRESENCE

NEW DEPLOYMENT STRATEGY FOR THE EVENINGS.

Last month BPD initiated a new deployment strategy in direct response to the safety concerns raised by many of our evening riders.



2-3 nights a week BPD assembles a team of officers and non-sworn personnel and responds to a selected station with those resources.



This deployment plan starts at approximately 9:30 pm each night and continues until the end of revenue service.



This strategy has been used to address reports of quality-of-life issues in the evening.

KEY WINS FOR BART PD

- Crime rate per million riders fell to 7.45 in Quarter 3 Fiscal Year 2022.
- Electronic item thefts remain low. 20 incidents in July compared with 25 in July 2020 during our lowest ridership.
- 2578 arrests have been made in 2022.
- For comparison, from January through August in 2021 we had a total of 1834 arrests.

