



# Access Projects Update

Dublin/Pleasanton Access Improvements (Iron Horse Trail Gap Closure)

Ashby Access Improvements

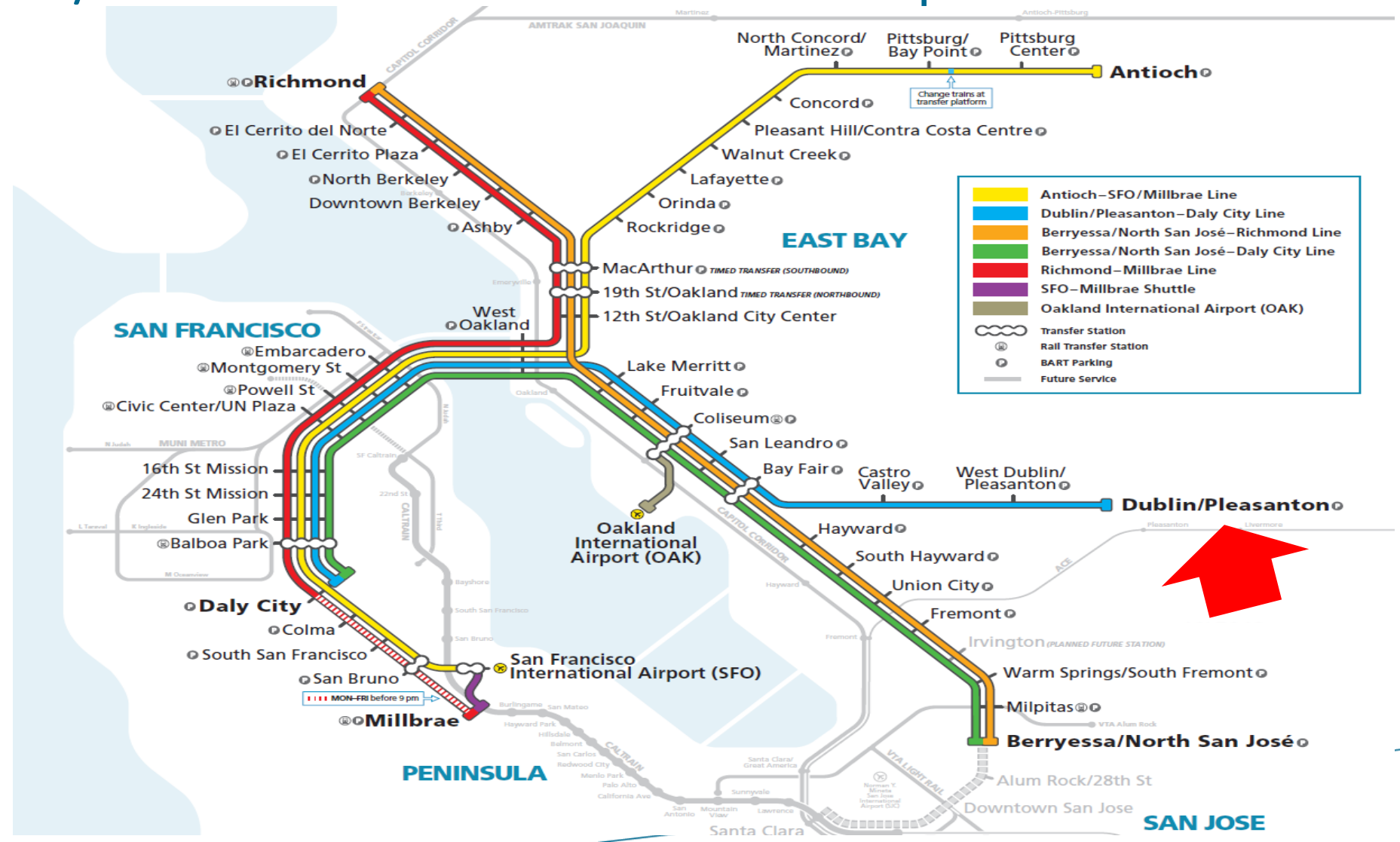


# Dublin/Pleasanton Access Improvements





# Dublin/Pleasanton Location Map



# Dublin/Pleasanton Site Map



\*Continues to Walnut Creek, Pleasant Hill and Concord BART Stations

# Dublin/Pleasanton Access Improvements

Existing



Future



- Project will close another gap in the Iron Horse Trail and improve access to Dublin/Pleasanton Station
- Separated cycle-track, pedestrian scale lighting, secure bike parking, storm water management, wayfinding, art
- \$15M cost with \$7.5M secured RR funding
- Currently at 95% Design, seeking outside funding for construction
  - ATP Cycle 6
  - Alameda CTC CIP (with City of Dublin)
- If successful, construction start around Fall-Winter 2023 and last 18 months

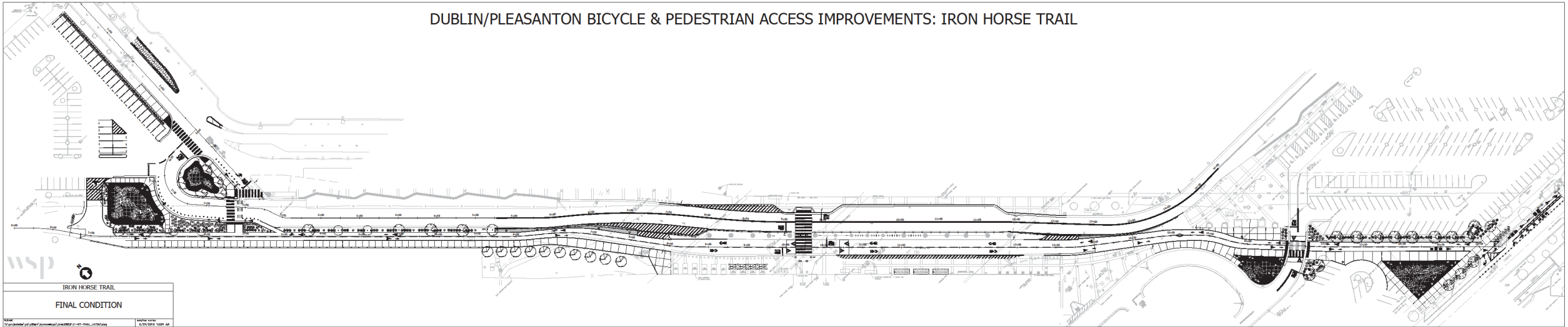


# City of Dublin's Iron Horse Trail Bike/Ped Bridge



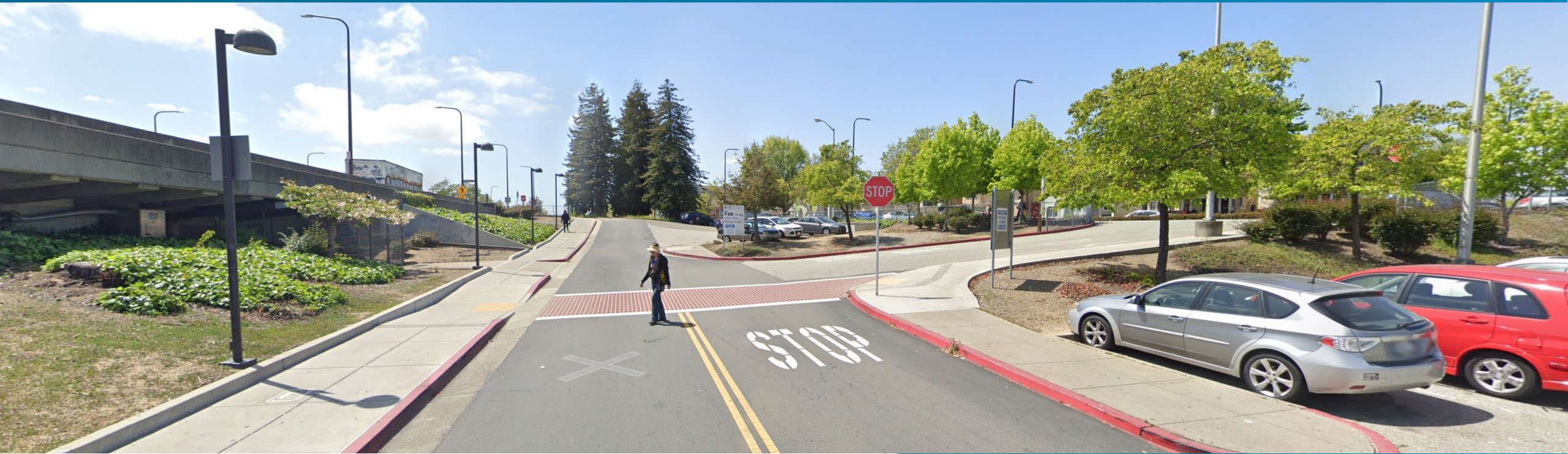
- Bike/Ped Bridge will close a major gap in the Iron Horse Trail and improve access to Dublin/Pleasanton BART Station
- Spans Dublin Boulevard
- \$11.6M budget
- Project includes BART Grant of \$1.5M from Measure RR Safe Routes to BART
- Construction Start Spring 2022
- Construction Finish Spring 2023

# Dublin/Pleasanton Access Improvements



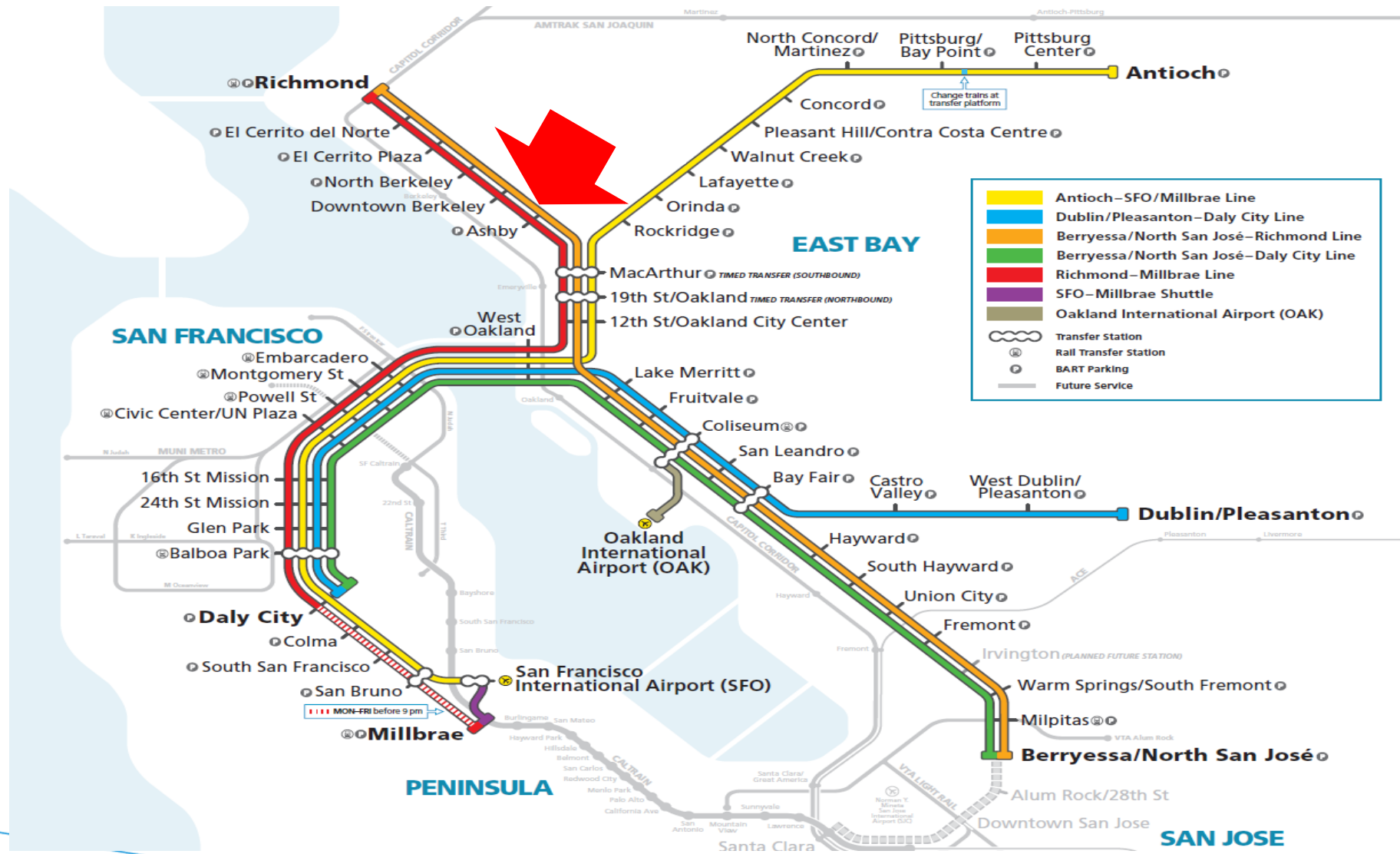


# Ashby Access Improvements





# Ashby Location Map





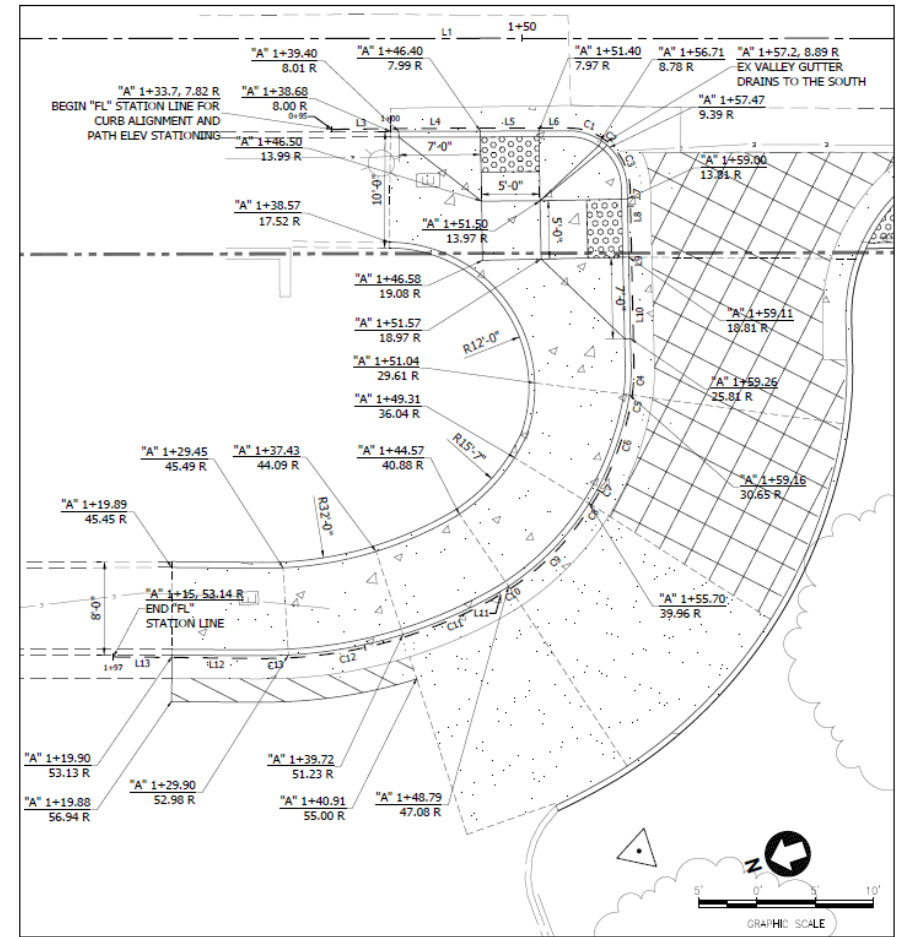




# Ashby Vehicle Circulation (Future)



## 11





# Ashby Access Improvements Update

- Currently at 65% Design
- Cost Estimate \$974K
  - \$ 600K Measure RR
  - \$ 274K AHSC Round 5 Grant
- 100% Design: Spring 23
- Other work in progress at Ashby:
  - Planning for Transit Oriented Development
  - Adeline Road Diet Feasibility Study
  - Flea Market Relocation Study
- Construction Schedule: depends on availability of BART Facilities/Buildings Group, because...

...they have their hands full with North Berkeley!





# Questions?

