



UNION CITY STATION DISTRICT

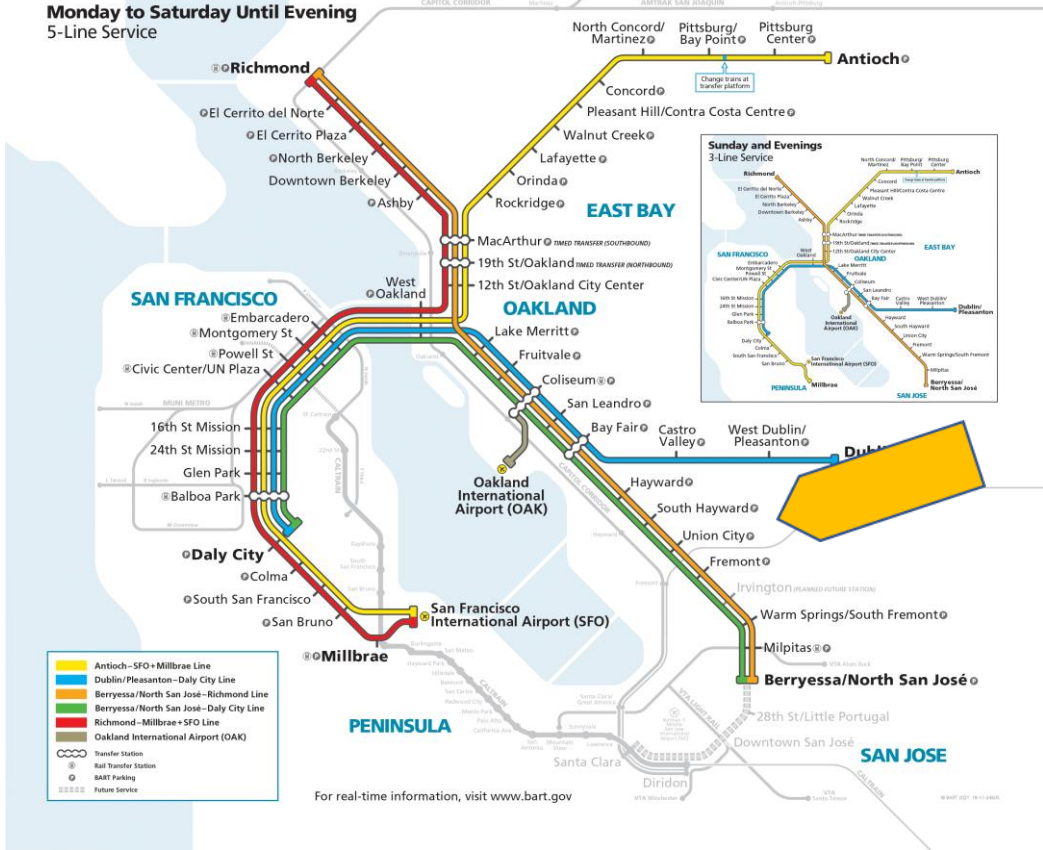
BART Board of Directors

December 2, 2021





Union City – Who Are We?

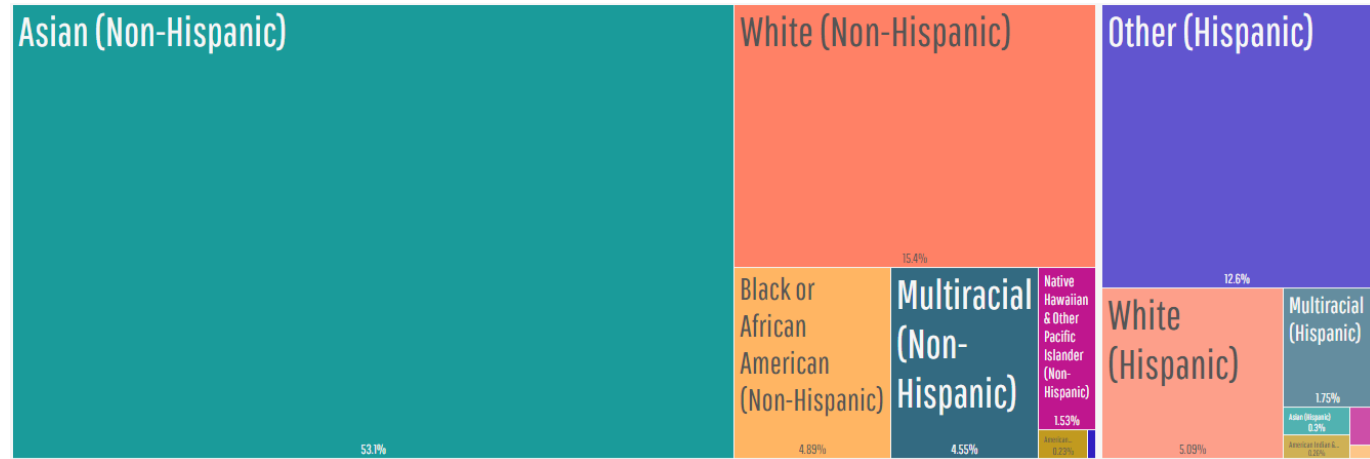


70,143
Population

Asian (Non-Hispanic)

White (Non-Hispanic)

Other (Hispanic)





| Partnerships with BART

- 1998** - Union City/BART/PG&E Master Plan
- 2001-2005** MTC Resolution 3434 (TOD Policy and Investment)
- 2002** - Intermodal Station District & Transit Facility Plan
BART Station Comprehensive Station Plan
- 2003** - Union City Intermodal Rail Station
- 2006** - Union City Passenger Rail Project EIR
- Mid 2000's** - 11th Street & BART Station, Phase 1A (Transit & Parking)
- Mid 2010's** - BART Station (Phase 1B/Phase 2) & East Plaza
- 2021** - Southern Alameda Integrated Rail Study (Union City Station)
- 2021** - BART Station, Phase 2A (East Entrance)
- 2022** - BART Pedestrian At-Grade Crossing (Complete East Entrance)

- 2026** - Quarry Lakes Parkway, Ph 1 & 2
- 2030** - Quarry Lakes Parkway, Ph 3 & 4 (Grade Separations)
- 2030** - Passenger Rail Service (ACE)

WITHIN ½ MILE OF BART

- ❖ BUILT over 1000 units
- ❖ BUILT 255 affordable units
- ❖ ENTITLED over 1400 units
- ❖ PLANNED more to come

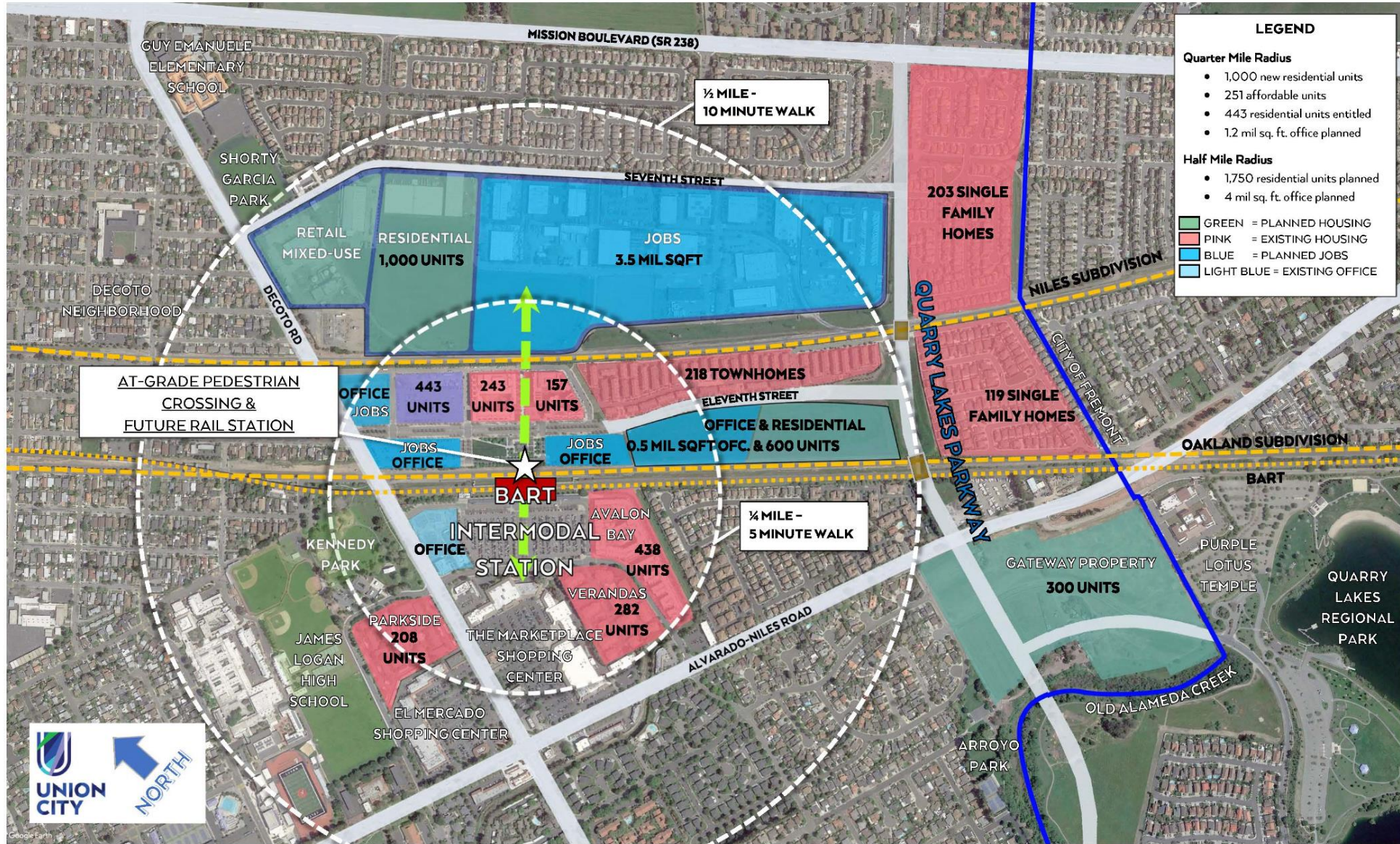
Union City BART Station (Planning Process)



- ❖ 2002 - Intermodal Station District and Transit Facility Plan
 - City
 - BART
 - AC Transit
 - VTA
 - CCJPA
 - SamTrans
 - ACTC

- ❖ 2002 Union City Station Comprehensive Plan (BART)

Station District Priority Development Area (PDA)

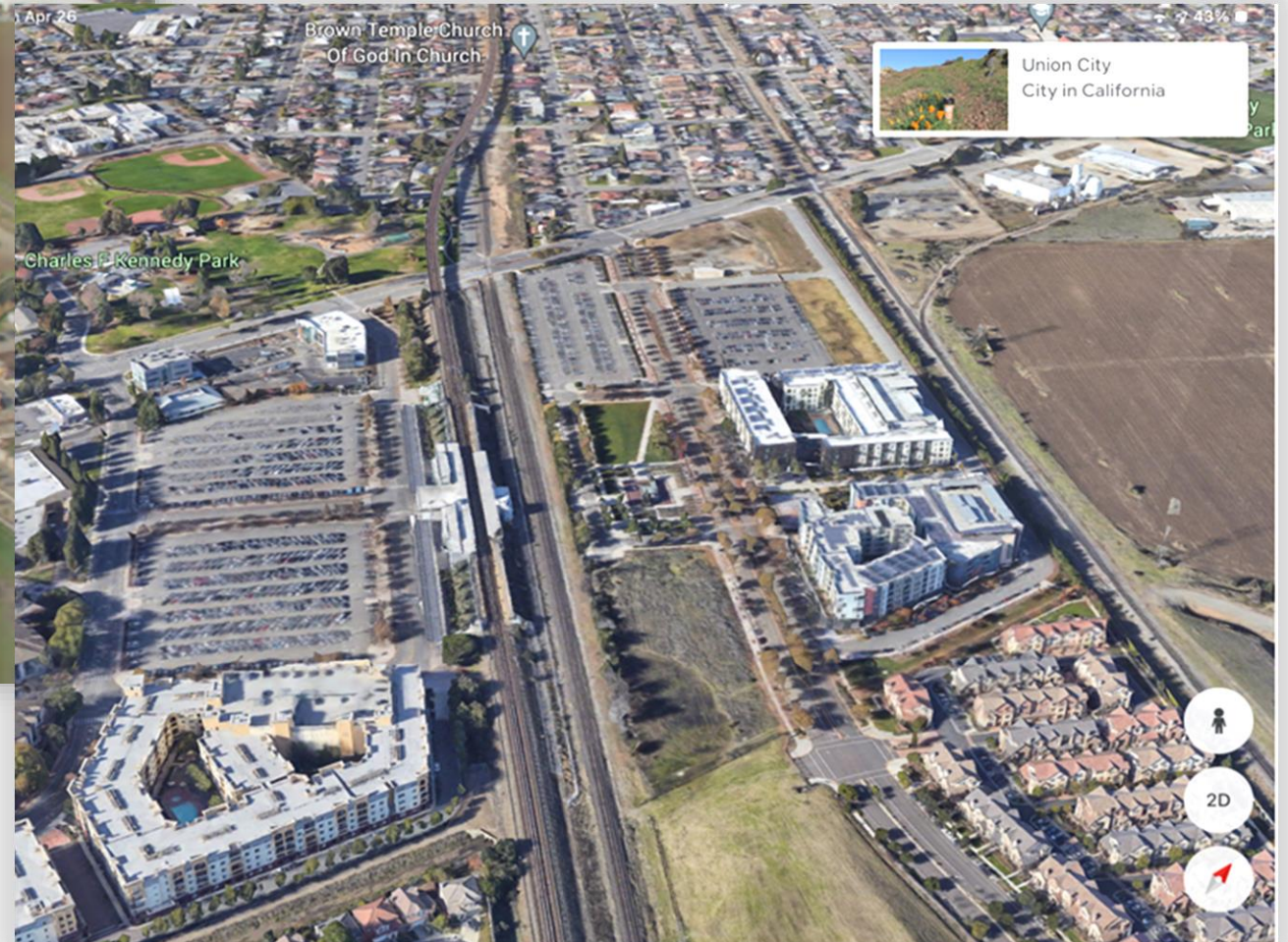


| Station District Core (2002 & Today)

TODAY – Over 1,000 Units Built



2002



| Union City BART Station – Built and Proposed

Core Station District



Union City BART Station



New apartments along the pedestrian spine



Union City Pyramid



Proposed - Union 1.2 @ BART

Station District at Buildout



Rendering of 11th Street in station district community with BART at-grade on the right.

Station East Properties



| Station East



974 units of housing

- ❖ Mixed use commercial
- ❖ Apartments
- ❖ Ownership
- ❖ 146 Affordable housing

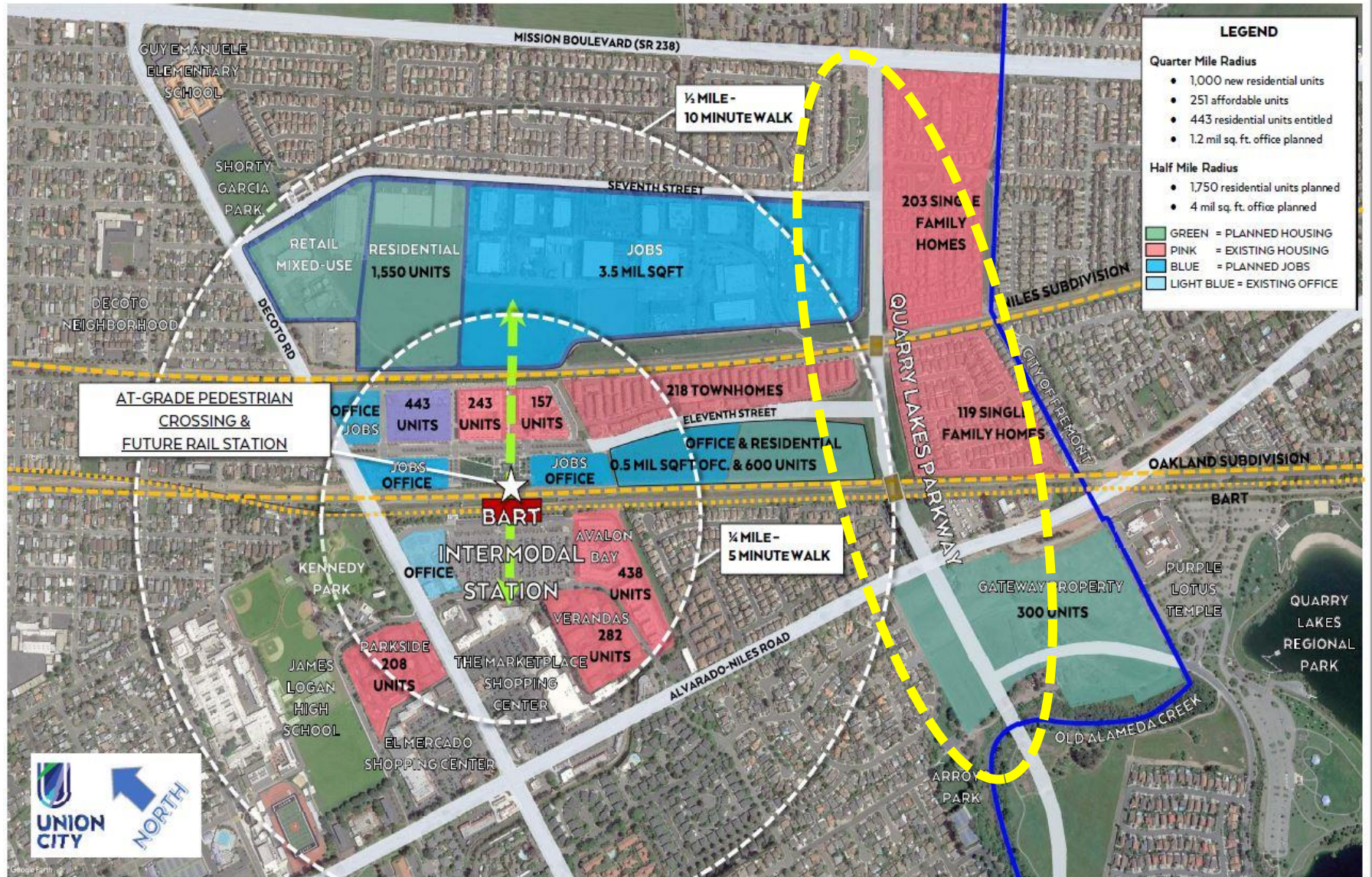
Gateway Property (Caltrans)

- ❖ CTC Action in June 2021
- ❖ Property Conveyed in July to City
- ❖ RFP for housing with 25% affordable
- ❖ In discussions with a developer



Station District Transportation Infrastructure Support TOD

- ❖ Pedestrian link to Station East
- ❖ East Entrance to BART
- ❖ Passenger Rail Connection at BART
- ❖ Quarry Lakes Parkway – Local Streets and Trails to Parks





| East BART Entrance



Rail Connection at BART

BAY AREA CONGESTION RELIEF LINKING HOUSING TO JOBS BY RAIL



ACE Connection to BART

Central Valley Housing
connection to Bay Area jobs

Supports TOD goals

First step for Dumbarton Rail



| Quarry Lakes Parkway Phases 1 and 2 in Design



| Quarry Lakes Parkway

Phases 3 and 4 Future Design – Grade Separations





| Transportation Projects and Station District

AC TRANSIT-DUMBARTON FORWARD (DECOTO RD)

- East/west link from Palo Alto to Union City BART

E. 14TH/MISSION-FREMONT MULTIMODAL (DECOTO ROAD)

- North/south link from San Leandro to Fremont, connecting 7 BART stations

CROSS BAY TRANSIT-DB CORRIDOR (DECOTO & QLP)

- East/west link providing high-capacity public transit between Redwood City and Union City BART

DECOTO ROAD MULTIMODAL CORRIDOR & QUARRY LAKES PARKWAY

- Transit priority system on Decoto Road and construction of Quarry Lakes Parkway to support Station District and Decoto Road

Thank You!



Questions?