

# Bay Trail SFO Gap Study

August 5, 2024

BART Bicycle Advisory Task Force

Image Credit: Laszlo Green

# Trail Map for Tonight's Talk

- Overview of Bay Trail and Project
- Community Engagement
- Alignment Options
- Next Steps

# Overview of Bay Trail and Project

# Bay Trail Goals

Foster active transportation

Promote healthy communities

Facilitate environmental stewardship and education

Increase equitable public shoreline access for all Bay Area residents and visitors



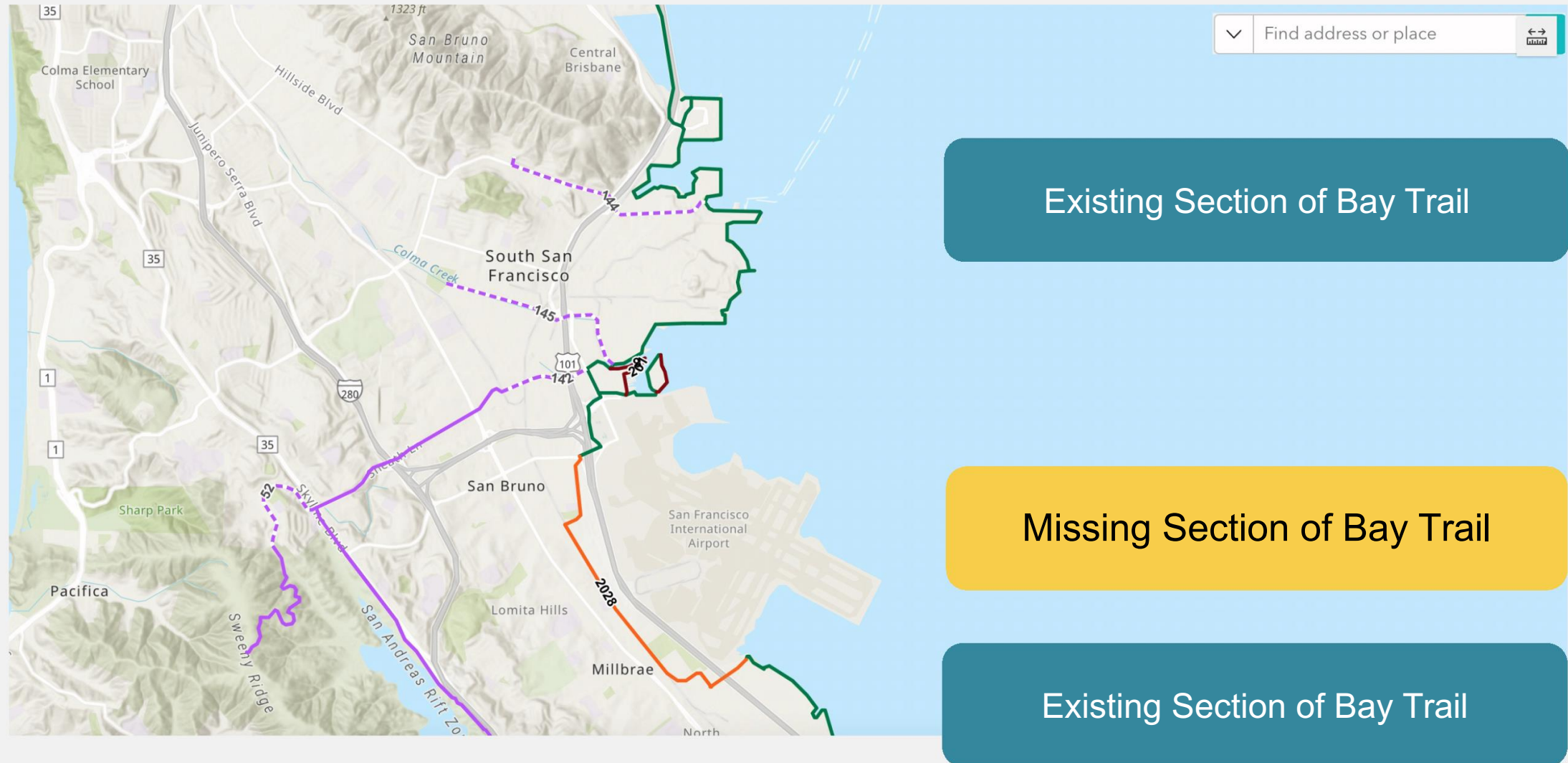
*Existing Bay Trail next to San Francisco International Airport  
Image Credit: Laszlo Green*

# Bay Trail

- 70% complete, ~350 miles
- 5½ Toll Bridges
- Public access to the Bay
- Separated Path Where Feasible



# Bay Trail SFO Gap Study Project Need



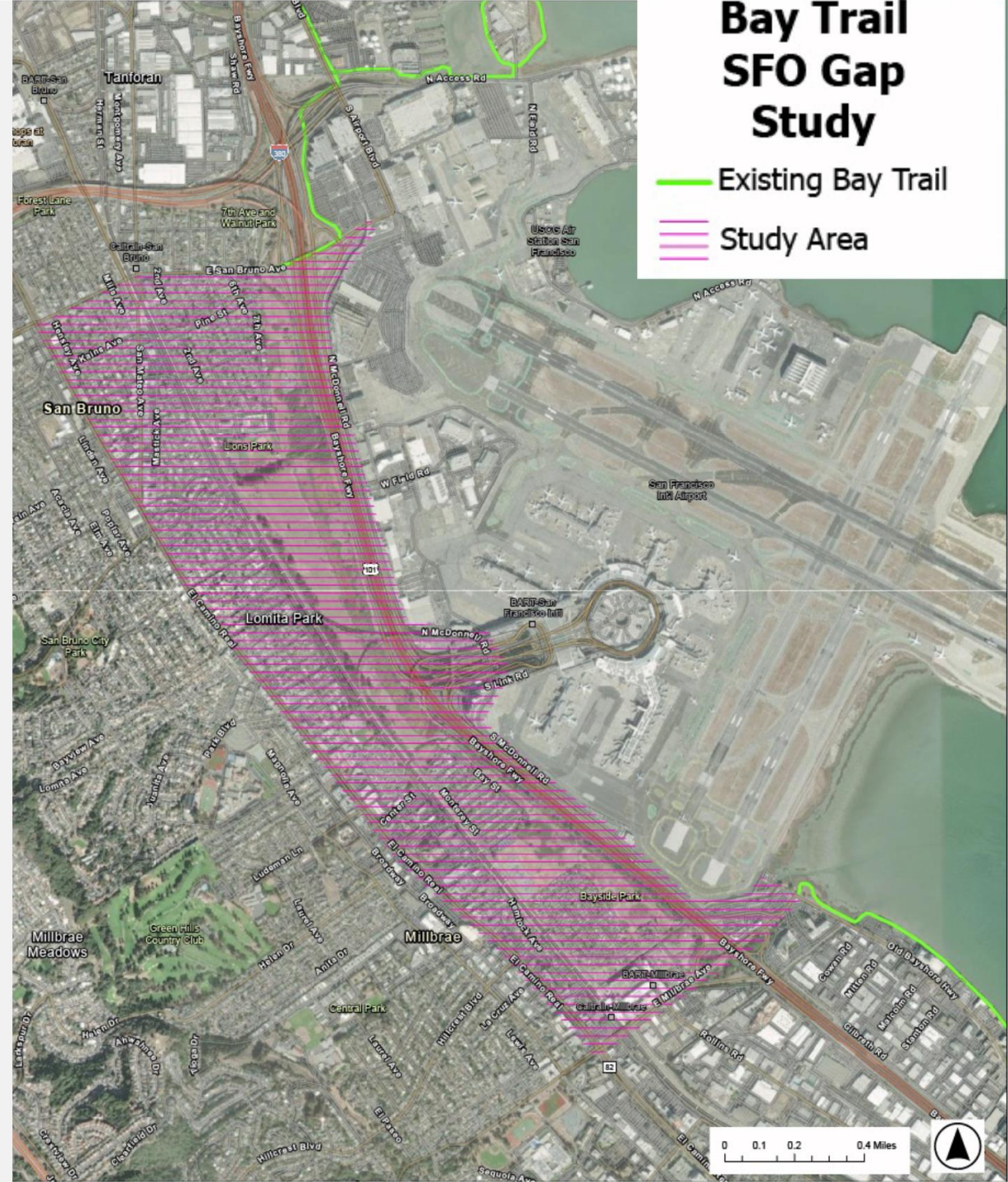
# Study Area

San Bruno Ave (North)

Millbrae Ave (South)

SFO (East)

El Camino Real (West)



# Project Description

SFO Gap Study is a *planning-level study* that will:

- Document existing conditions
- Identify potential Bay Trail alignments in vicinity of SFO
- Determine preferred trail alignment and develop concept design

**Budget:** \$160,000

**Source:** Donation from John and Gwen Smart Foundation

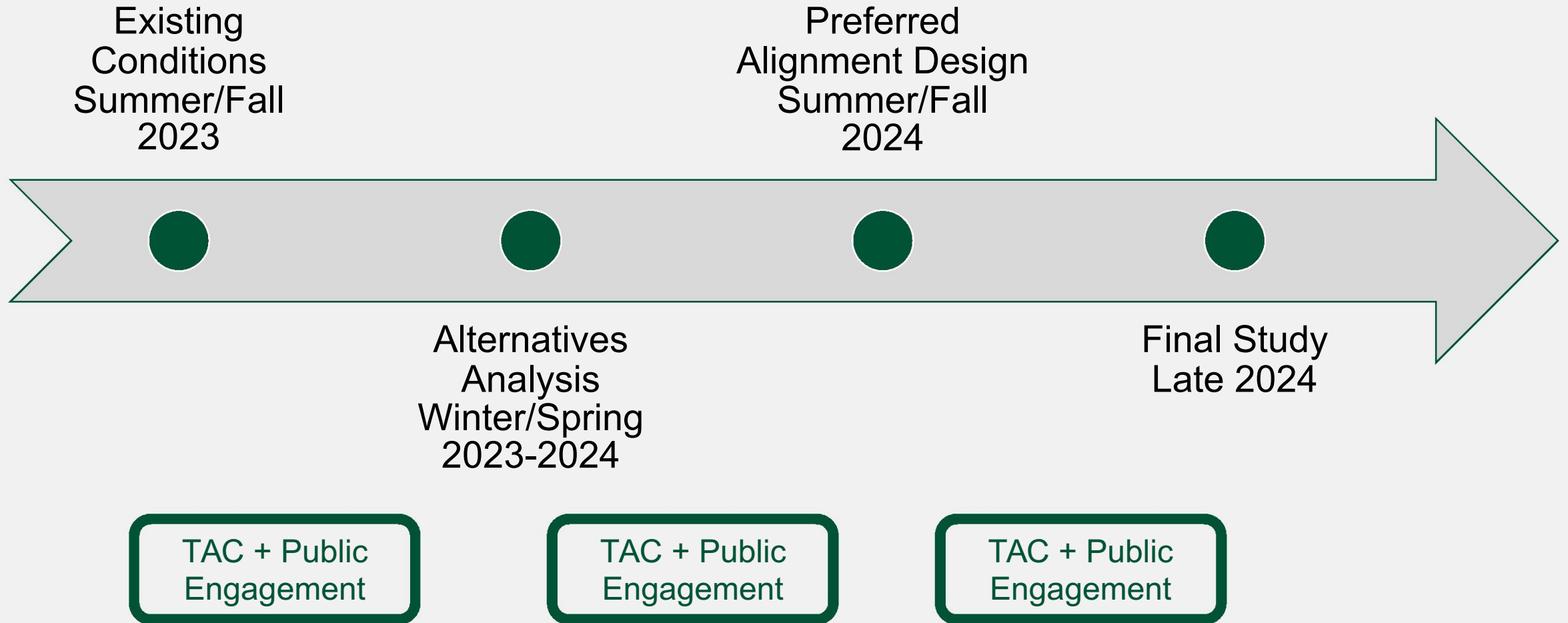
Additional Budget: \$40,000 for additional environmental work, \$13,500 for ROW analysis, \$9,750 for additional engagement



*Existing Bay Trail next to San Francisco International Airport  
Image Credit: Laszlo Green*



# Project Timeline



# Community Engagement

# Community Engagement Overview

## Phase 1: Fall 2023

Understand general Bay Trail and active transportation usage within the study area; identify preferred trail user experience.

## Phase 2: Summer 2024

Gather input on the 3 potential alignments

## Phase 3: Fall 2024

Gather input on the final preferred alignment

### Social Media Outreach: Facebook + Instagram

**521,000+**  
IMPRESSIONS

**4,800+**  
CLICK-THRU

**1,500+**  
SURVEY  
RESPONSES

# Phase 1 Community Engagement: Bay Trail Use & Purpose



USE THE BAY TRAIL NEAR SFO  
(all survey responses)



WOULD USE FUTURE BAY TRAIL  
THROUGH SFO AREA  
(all survey responses)

WHY DO YOU USE THE BAY TRAIL  
NEAR SFO?  
(multiple options could be selected)



EXERCISE/RECREATION  
(all survey responses)



COMMUTE/UTILITARIAN  
PURPOSES (WORK, SCHOOL,  
ERRANDS, ETC.)  
(all survey responses)

# Alignment Options

# Alignments

El Camino Real - on-street facility

1998 Plan - off-street path

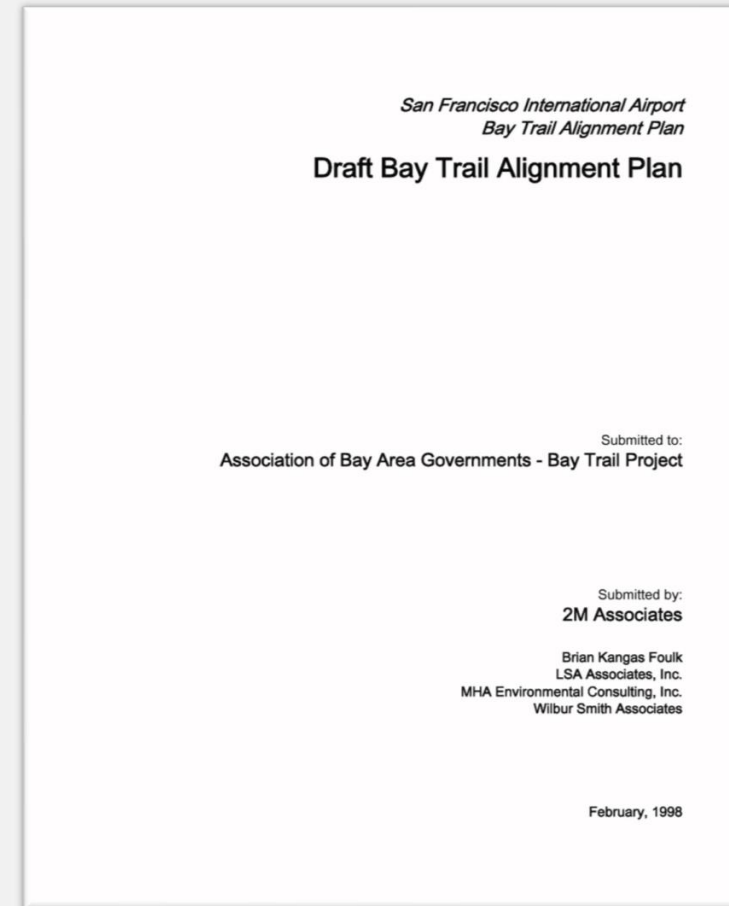
West of Bayshore - off-street path



# 1998 SFIA Bay Trail Alignment Plan (BTAP)

The BTAP developed a "preferred permanent alignment" around SFO on the West-of-Bayshore property.

However, 25 years have passed since the 1998 plan, so the study team is analyzing this alignment along with other potential alignments.



# Benefits & Challenges of Alignment Options

## El Camino Real

### Benefits

- Direct connections: commercial areas and transit
- No known sensitive habitats or species

### Challenges

- Longest route
- Furthest from the Bay
- No “Bay Trail” nature experience
- Substantial safety challenges

## 1998 Plan

### Benefits

- Direct connections: parks, neighborhoods, and schools
- “Bay Trail” nature experience
- Opportunities for vista points and education kiosks about sensitive species

### Challenges

- Potential impact to sensitive habitats and species
- Moderate permitting process

## West of Bayshore

### Benefits

- Best “Bay Trail” nature experience
- Opportunities for vista points and education kiosks about sensitive species

### Challenges

- Limited connections
- Substantial impact to sensitive habitats and species
- Most lengthy permitting process
- Most costly
- Longest timeline



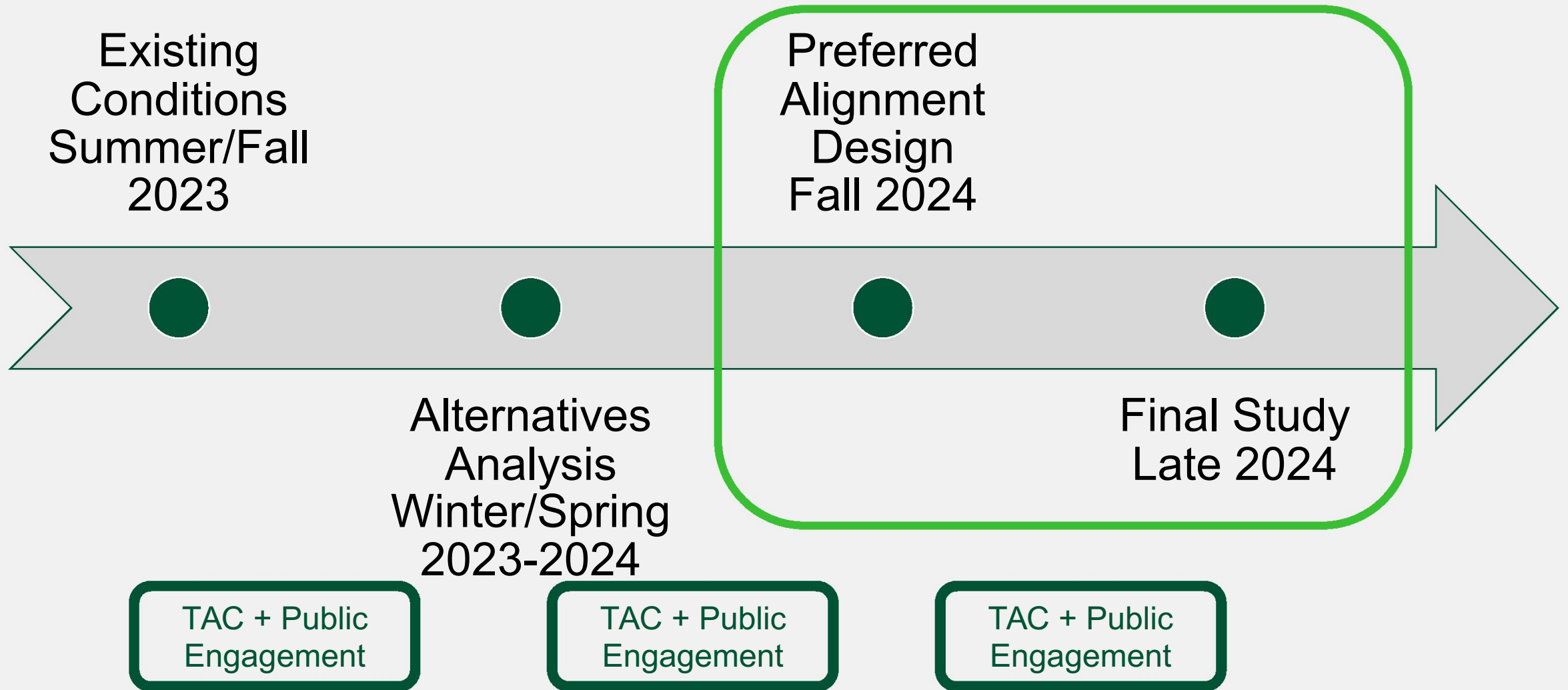
# Next Steps

# Summer 2024 Community Engagement

- August 13 – Off the Grid, San Bruno, Tanforan Mall, 5-8 pm
- August 15 – Millbrae “Beats, Brews, & Vines” event, downtown Millbrae, starts at 6 pm  
<https://www.ci.millbrae.ca.us/354/Beats-Brews-Vines>
- **Free bike tune-ups from BikeMobile at 8/13 and 8/15 events!**
- Online survey, open through August 31
  - Supported by Facebook + Instagram outreach

<https://mtc.ca.gov/operations/regional-trails-parks/san-francisco-bay-trail/bay-trail-sfo-gap-study>

# Project Timeline



**Thank you!**

# **Bay Trail SFO Gap Study**

Dee (Diane) Dohm

Project Manager, Bay Trail SFO Gap Study

Design and Project Delivery Section

Metropolitan Transportation Commission (MTC)

[ddohm@bayareametro.gov](mailto:ddohm@bayareametro.gov)

Study Web Page:

<https://mtc.ca.gov/operations/regional-trails-parks/san-francisco-bay-trail/bay-trail-sfo-gap-study>

