



Calendar Year (CY) 2023 Annual Report - Sustainability

July 11, 2024



CY 2023 Sustainability Report: Agenda

- Sustainability at BART
- Highlights
- Case Studies
- Metrics & Actions
- Priorities & Opportunities

CY 2023 Sustainability Report:

Sustainability at BART

- Transportation accounts for 38% of greenhouse gas (GHG) emissions in CA, and of those, 71% are produced by passenger vehicles¹.
- BART supports a shift from driving alone to transit and thereby contributes significantly to the reduction of GHG emissions from Transportation in the Bay Area.
 - BART averaged about 156,015 passenger trips per weekday in CY 2023
- In addition, BART is committed to integrating sustainability into its daily operations and future transit investments.
- BART published a [Sustainability Action Plan \(SAP\)](#) (Dec 2017) which includes specific types of projects that BART has/is/will implement to pursue and achieve the American Public Transportation Association (APTA) sustainability categories goals and BART-specific targets.
- BART publishes annual reports documenting our progress on the SAP
 - [2018](#), [2019](#), [2020](#), [2021](#), [2022](#), 2023

¹2023 CA Air Resources Board (CARB) [California Emissions Trends Report: 2000 – 2021](#)

CY 2023 Sustainability Report: Sustainability Action Plan Overview

2017 Sustainability Action Plan

Time horizon: 2015 (baseline year) to 2025

7 Sustainability Categories that align with APTA Sustainability Indicators

TARGETS

- Types of targets:
 - Commitment – based on commitment to high scoring actions, implementation is constrained by potential funding limitations
 - Aspiration – assumes full plan implementation and fewer budget constraints

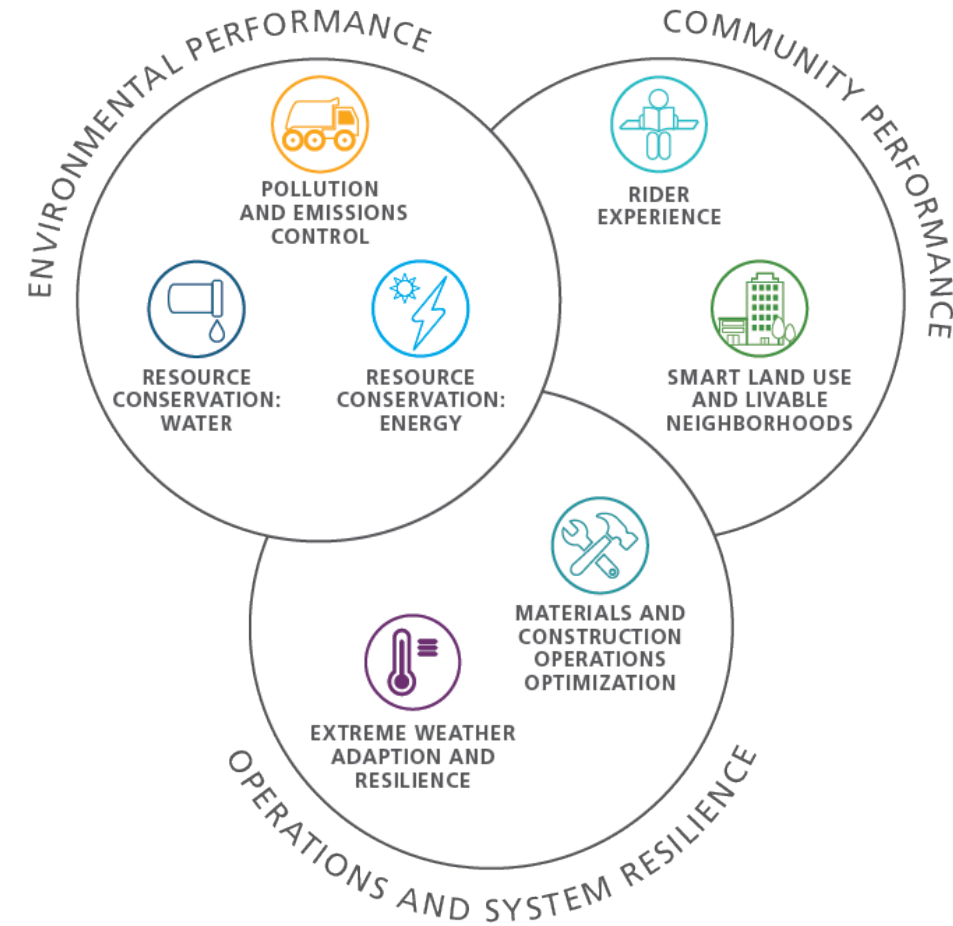
ACTIONS

- The Plan contains **55** Actions (**120** sub-actions) covering the **20** Priority Actions highlighted as near-term focus areas

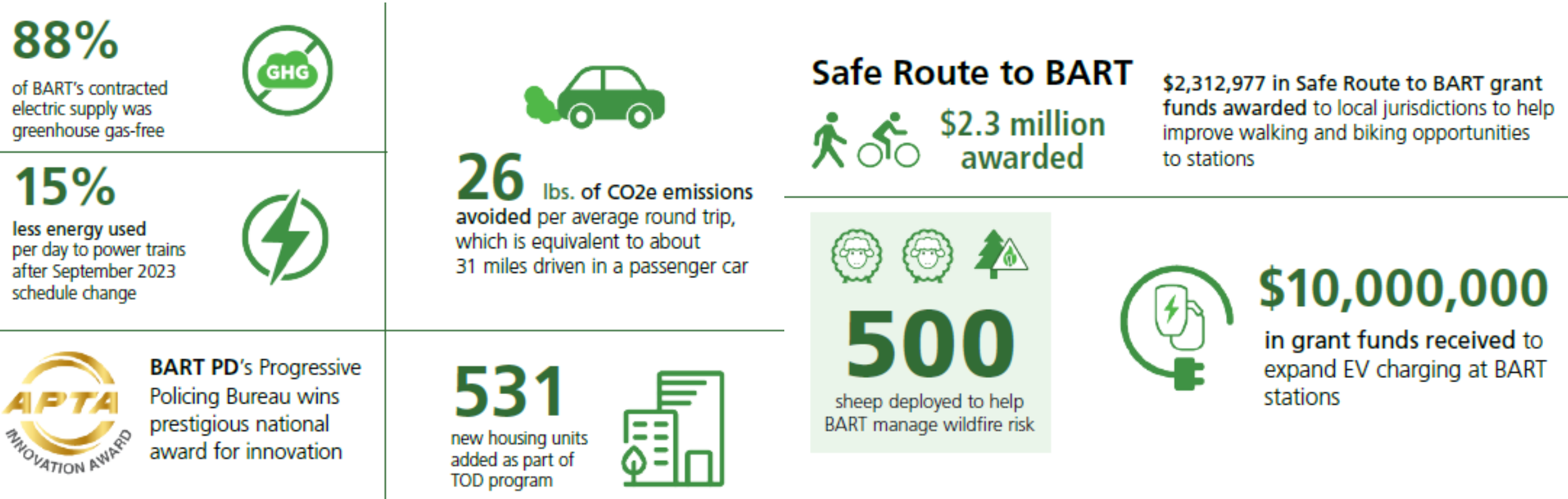
2025 Sustainability Action Plan

Time Horizon: 2026 to 2035

Sustainability team has begun developing new plan



CY 2023 Sustainability Report: Highlights



CY 2023 Sustainability Report:

Case Studies - See report for detailed writeups



New Service Changes Save Energy and Costs, Improve Reliability



Warm Springs Extension Wetland and Riparian Conservation Easement



BART Focuses on Station Accessibility and Blind and Low-Vision Riders



Transit-Oriented Development Projects Completed at Two BART Stations

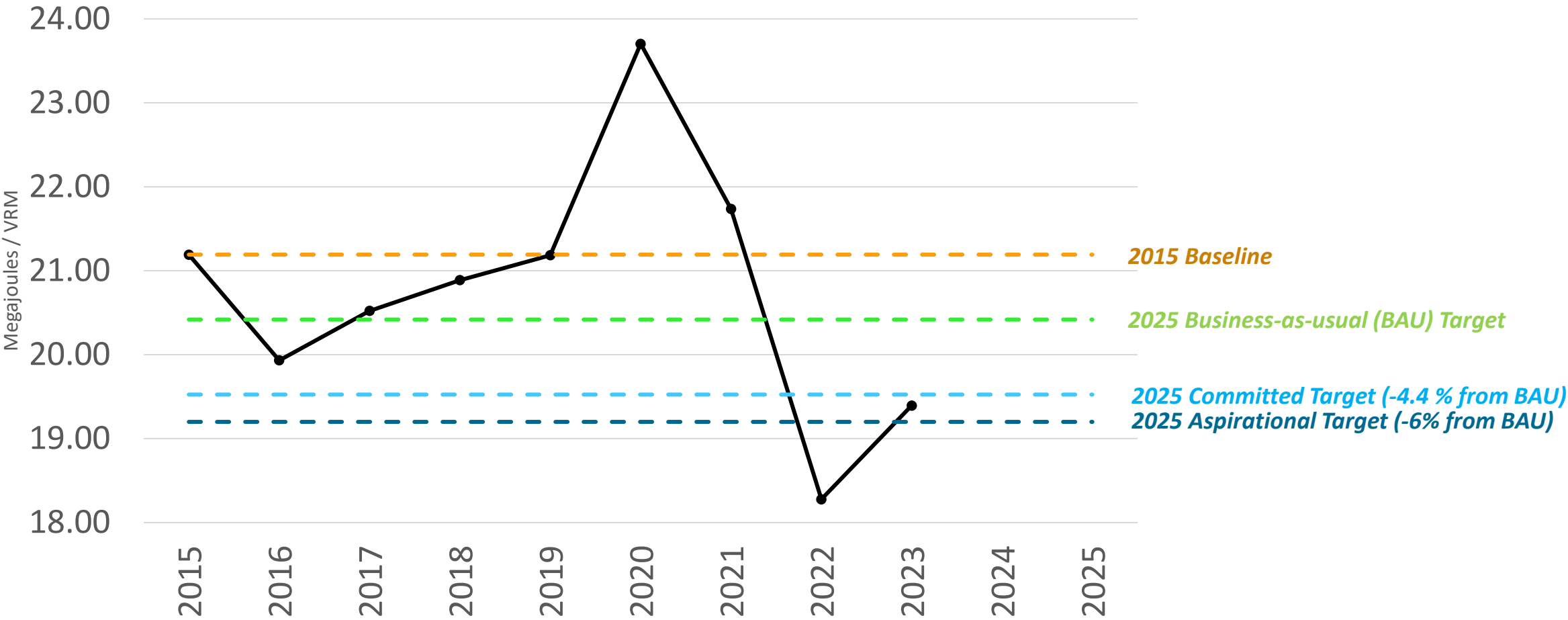


BART Receives Award for Progressive Policing Innovations



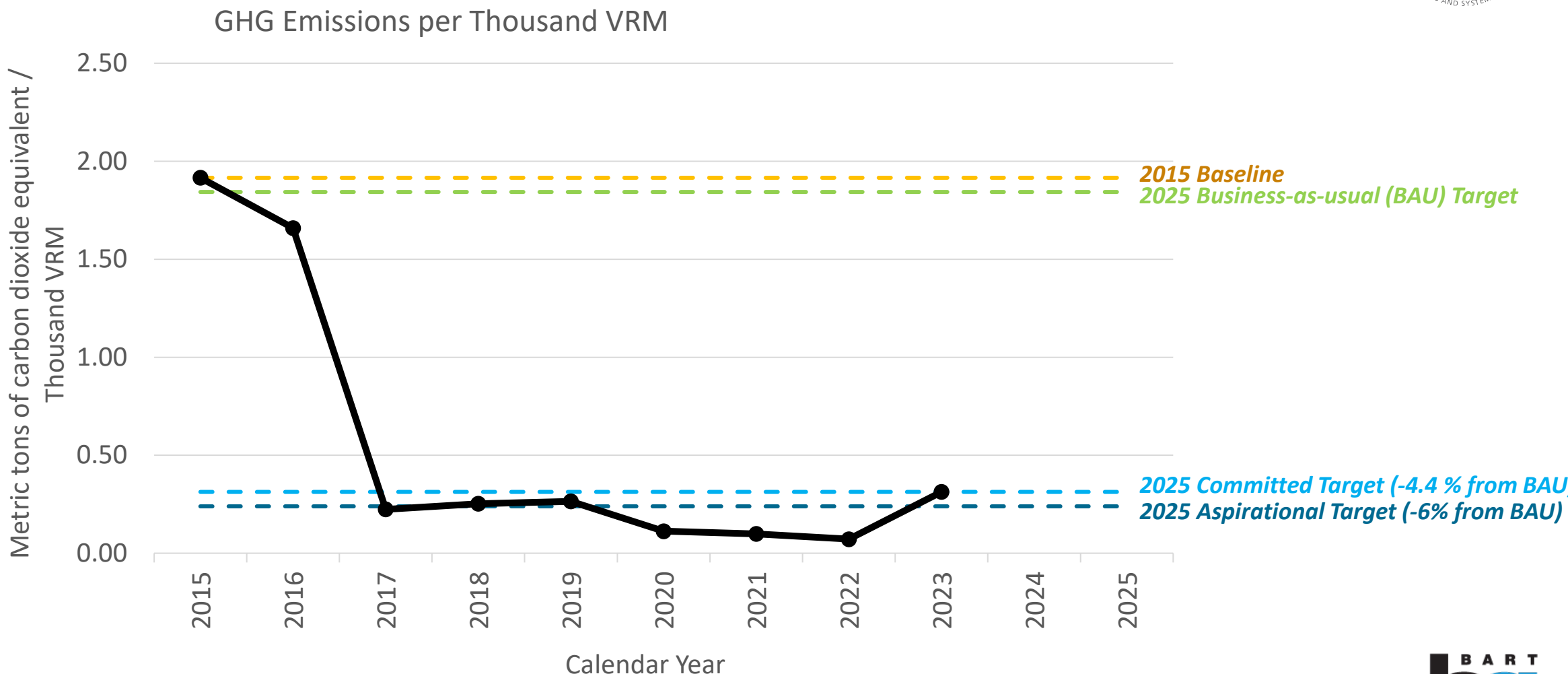
CY 2023 Sustainability Report:

Energy Use per Vehicle Revenue Mile (VRM)



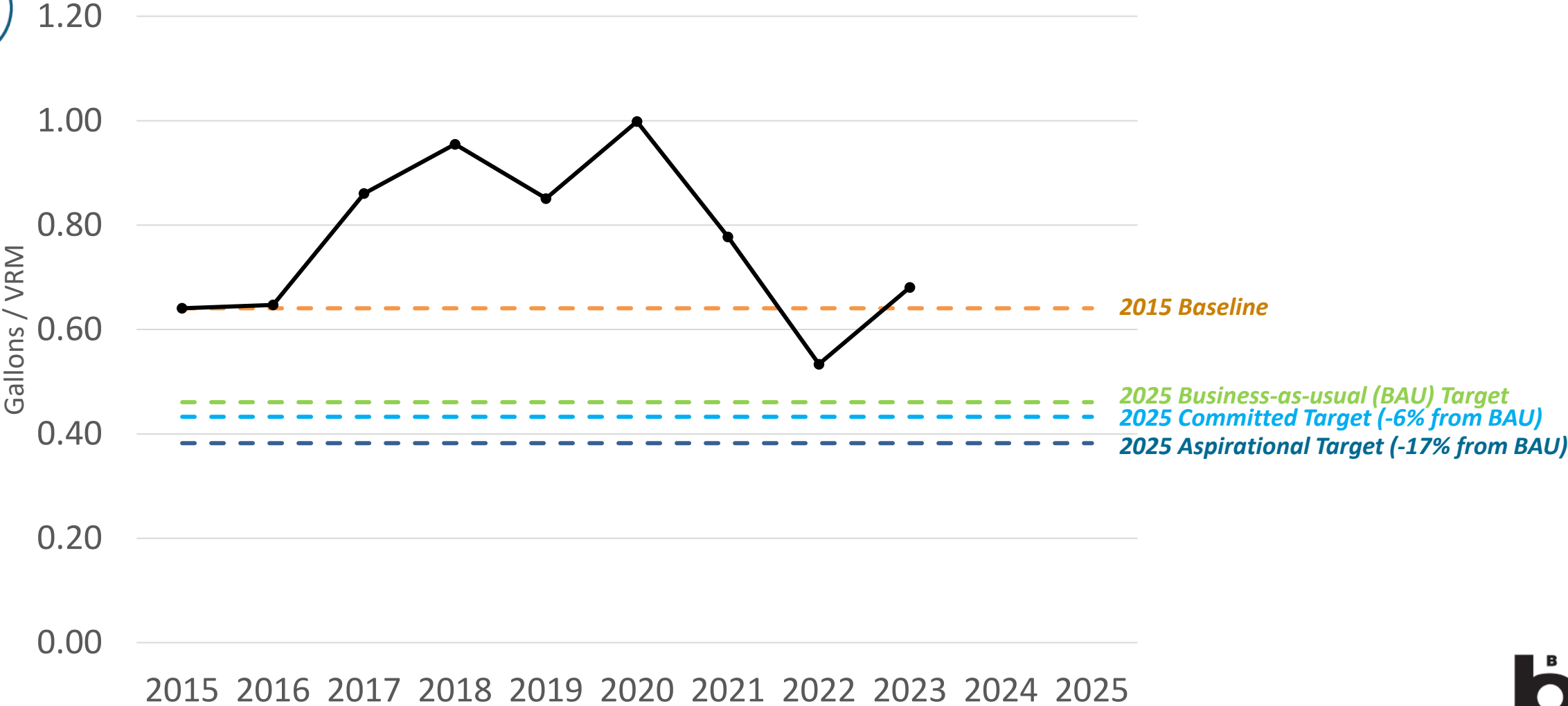
CY 2023 Sustainability Report:

GHG Emissions per Thousand VRM




CY 2023 Sustainability Report:

Water Use per VRM



CY 2023 Sustainability Report: Performance Metrics and Targets



Category	Metric	Unit	2015 Baseline	2016	2017	2018	2019	2020	2021	2022	2023	2025 Target
 Smart Land Use and Livable Neighborhoods	Residential units	# of units	1,416	1,506	1,975	1,975	2,649	3,251	3,251	3,609	4051	7000
	Affordable residential units	# of affordable units	256	346	613	613	845	901	901	901	1,119	2400
	Office/commercial square footage	Square feet	188,590	188,590	194,590	194,590	637,590	643,690	643,690	658,690	854,754	1,000,000
	Mode share: active (walking and bicycling)	%	44%	Will be measured in next Station Profile Survey (survey underway in 2024)								52%
	Mode share: shared mobility	%	29%	Will be measured in next Station Profile Survey (survey underway in 2024)								32%
	Mode share: drive & park	%	27%	Will be measured in next Station Profile Survey (survey underway in 2024)								16%
	GHG emissions associated with passenger access	Kg of CO2e / rider / day	0.56	Will be measured in next Station Profile Survey (survey underway in 2024)								0.43

CY 2023 Sustainability Report:

Performance Metrics and Targets



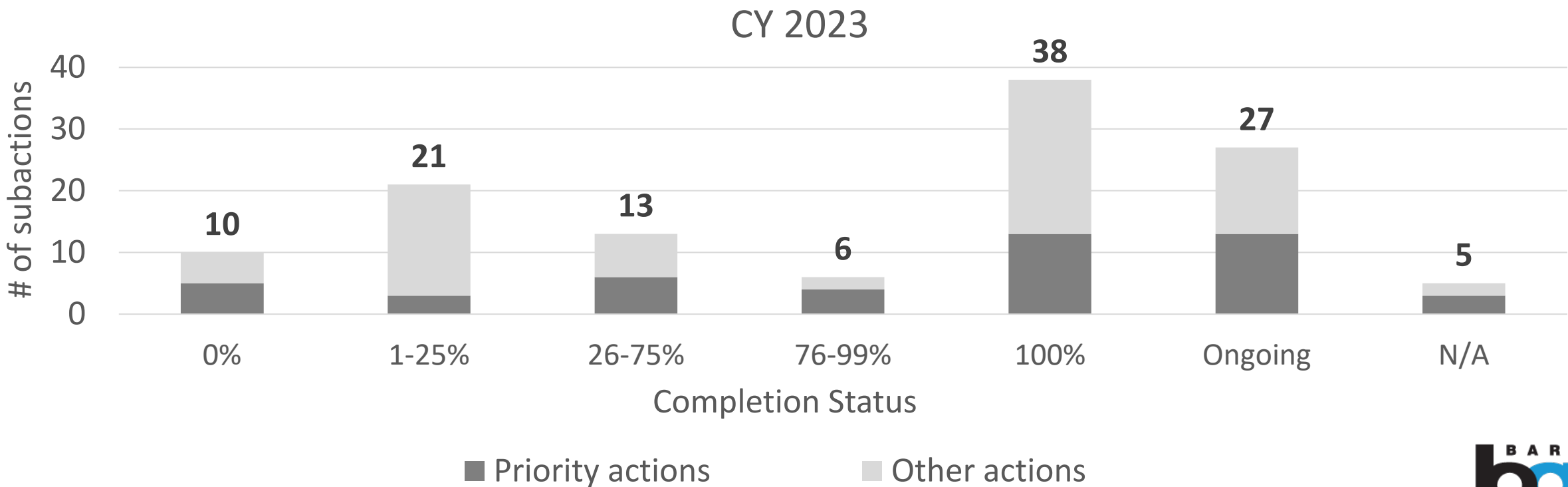
Category	Metric	Unit	2015 Baseline	2016	2017	2018	2019	2020	2021	2022	2023	2025 Target
Rider Experience	Quarterly reporting of safety and performance indicators	Completed/ Not Completed	Completed									Completed
	Has BART met all adopted performance standards for safety and patron comfort?	Yes/No	No									Yes
Emissions and Pollution Control	Total solid waste	BART's Sustainability Team is developing a Master Waste Management Plan to address and improve landfill, recycling and composting across BART's facilities. As part of this Master Waste Management Plan, BART will collect data to establish baselines and set realistic targets.										
	Landfill diversion rate											
Materials and Construction Operations Optimization	Percentage of BART’s project delivery staff trained in BART Facilities Standards (BFS) Sustainability Controls	%	Training commenced in 2021.						18%	31%	90%	100%
Extreme Weather Adaptation and Resilience	% of high priority actions in the BART Local Hazard Mitigation Plan that are underway or complete	%	Tracking commenced in 2021.						86%	86%	100%	100%

CY 2023 Sustainability Report:

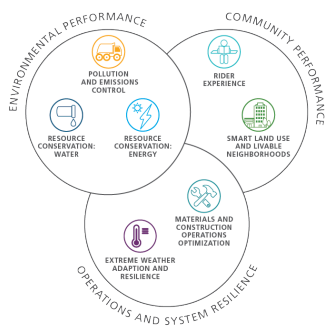
Year-over-year Completion of Action Plan Items



- 2017 Sustainability Action Plan contains 55 actions and 120 sub-actions to be completed by 2025
- **2 actions completed and 3 begun in 2023**



CY 2023 Sustainability Report: Priorities & Opportunities for 2024



Energy Use & GHG Emissions

- Implement station lighting plan (plan completed in 2023)
- Run pilot for electrification of non-revenue vehicle fleet
- Issue request for proposal (RFP) for EV charging at passenger stations

Water

- Collect data to inform our water reduction strategies in shops & yards
- Engage with relevant departments for opportunities on managing water more efficiently

Emission and Pollution Control

- Expand recycling and composting to shops & yards
- Calculate waste generation at stations and shops & yards; develop new metric

Extreme Weather Adaptation

- Collaborating with Office of District Architect to define and codify BART's approach to resiliency

Continue developing 2025 Sustainability Action Plan



