



Calendar Year (CY) 2024 Annual Report - Sustainability

June 2025



CY 2024 Sustainability Report: Agenda

- Sustainability at BART
- Highlights
- Case Studies
- Metrics & Actions
- Priorities & Opportunities
- Appendix

CY 2024 Sustainability Report:

Sustainability at BART

Both what BART does...

- Transportation accounts for 38% of greenhouse gas (GHG) emissions in CA, and of those, 69% are produced by passenger vehicles¹.
- BART supports a shift from driving alone to transit, significantly reducing GHG emissions from transportation in the Bay Area.

...and how BART does it

- Through the Sustainability Policy (Adopted 2017), BART is committed to integrating sustainability into its daily operations and future transit investments.
- BART published a [Sustainability Action Plan \(SAP\)](#) (Dec 2017) which includes specific goals, targets, and projects aligned with the American Public Transportation Association (APTA) sustainability categories.
- BART publishes annual reports documenting our progress on the SAP, which goes through 2025.
 - [2018](#), [2019](#), [2020](#), [2021](#), [2022](#), [2023](#), 2024

² 12023 CA Air Resources Board (CARB) [California Emissions Trends Report: 2000 – 2021](#)

CY 2024 Sustainability Report: Sustainability Action Plan Overview

2017 Sustainability Action Plan

Time horizon: 2015 (baseline year) to 2025

7 Sustainability Categories that align with APTA Sustainability Indicators

TARGETS

- Types of targets:
 - Commitment – based on commitment to high scoring actions, implementation is constrained by potential funding limitations
 - Aspiration – assumes full plan implementation and fewer budget constraints

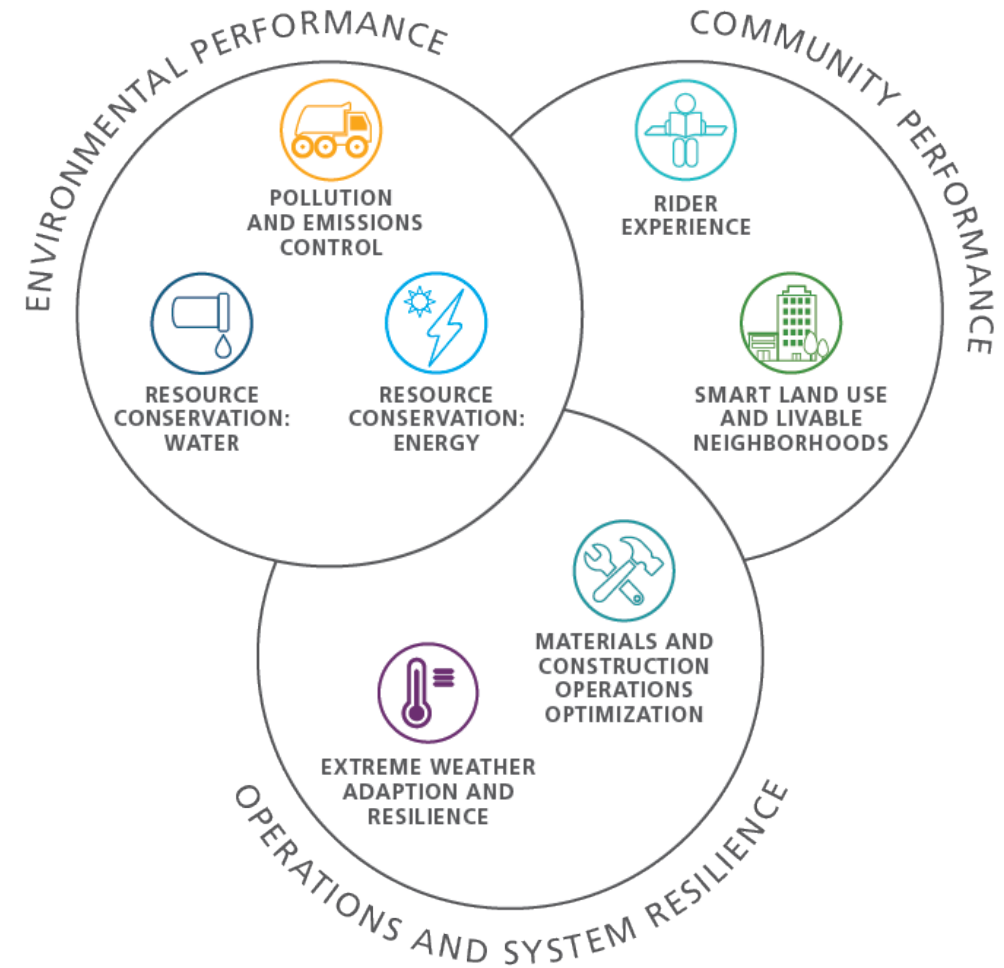
ACTIONS

- The Plan contains **55** Actions (**120** sub-actions) covering the **20** Priority Actions are highlighted as near-term focus areas

2026-2035 Sustainability Action Plan

Time Horizon: 2026 to 2035

Sustainability team has begun developing new plan



CY 2024 Sustainability Report: Highlights

86%

of BART's contracted
electric supply was
greenhouse gas-free



Earthquake Safety
Program completed



\$24,126,560

in funds awarded for
EV charging expansion

Final Car of the original
Fleet of the Future
contract delivered



Bought first nine
electric trucks



25.1

lbs. of CO₂e
emissions avoided per average
round trip



181

mixed income housing units built
near Fruitvale Station



Paper tickets reused for
fashion show

CY 2024 Sustainability Report:

Case Studies - See report for detailed writeups



BART's Role in the Region Report



Earthquake Safety Program Completed



BART Green Team: Tree Planting Event & Coastal Cleanup



Transit-Oriented Development Project Completed At Fruitvale Station



BART Focuses on Wayfinding Amid Other Customer Access Updates

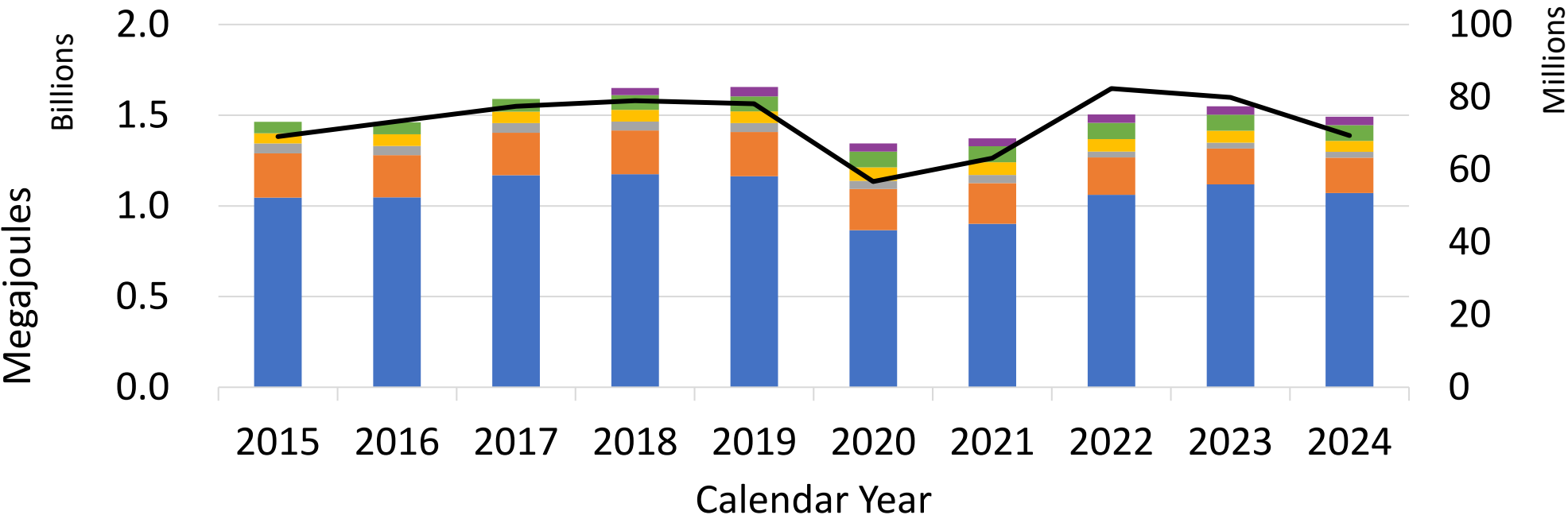


BART Awarded Grants for Electric Vehicle Charging Expansion



CY 2024 Sustainability Report:

Energy Use by Category



Vehicle Revenue Miles

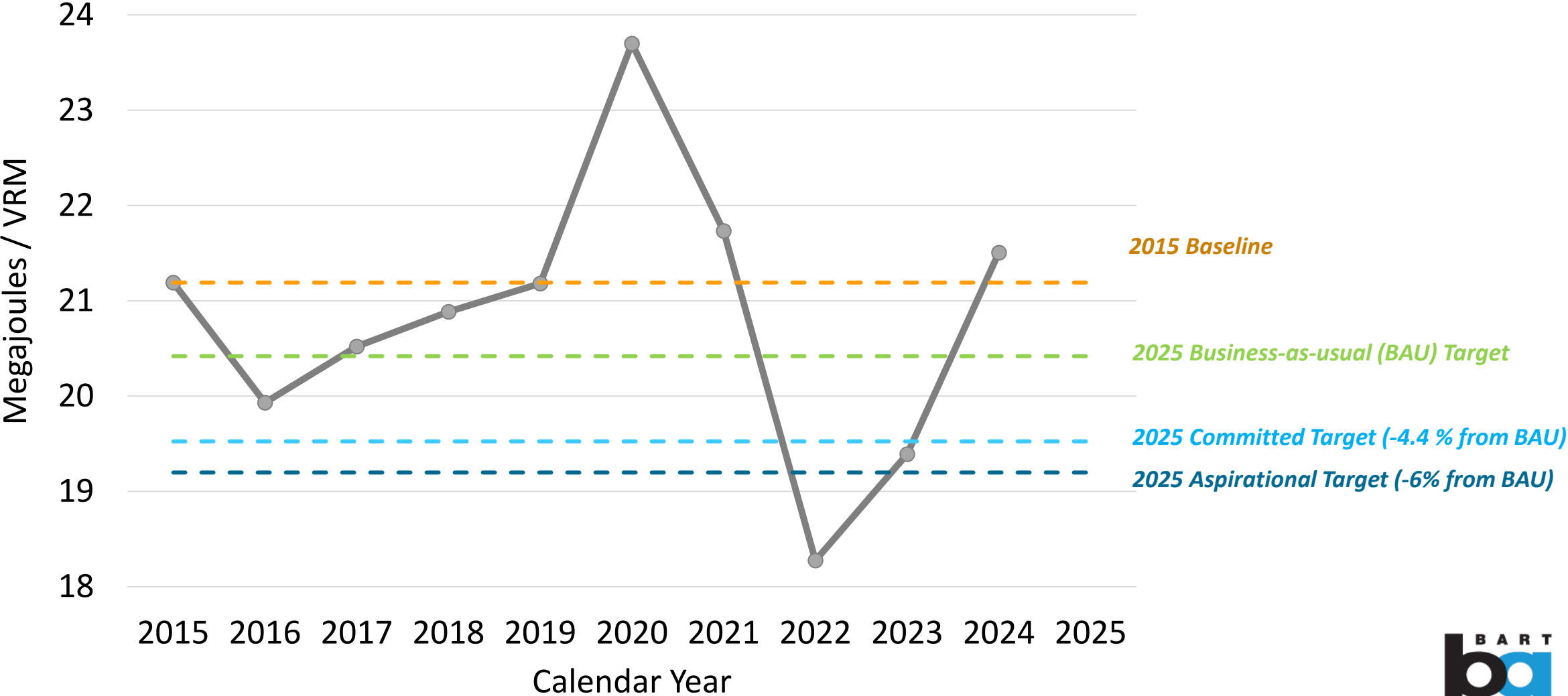


2023-2024 YOY % Change = -3.7% overall

- 4.21% Electric Traction
- 1.34% Offices
- 2.6% Non-Revenue Vehicles & Equipment
- 13.2% Vehicle Revenue Miles
- 1.39% Stations
- 8.14% Shops & Yards
- +1.4% Diesel Traction

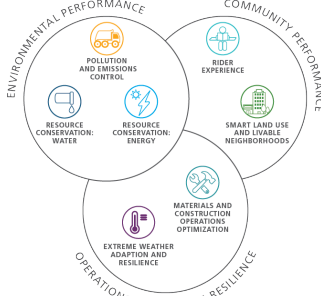
CY 2024 Sustainability Report:

Energy Use per Vehicle Revenue Mile (VRM)

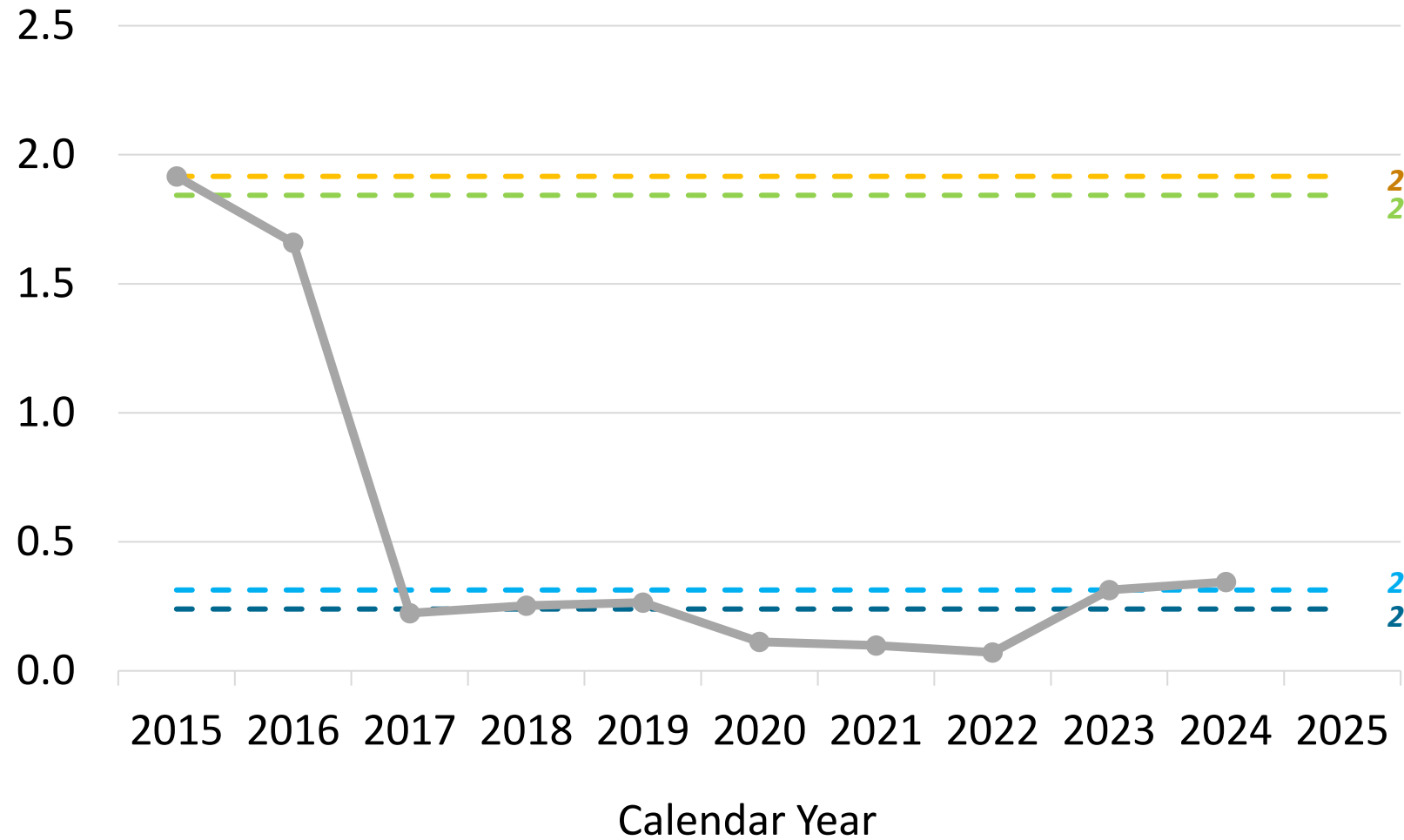


CY 2024 Sustainability Report:

GHG Emissions per Thousand VRM

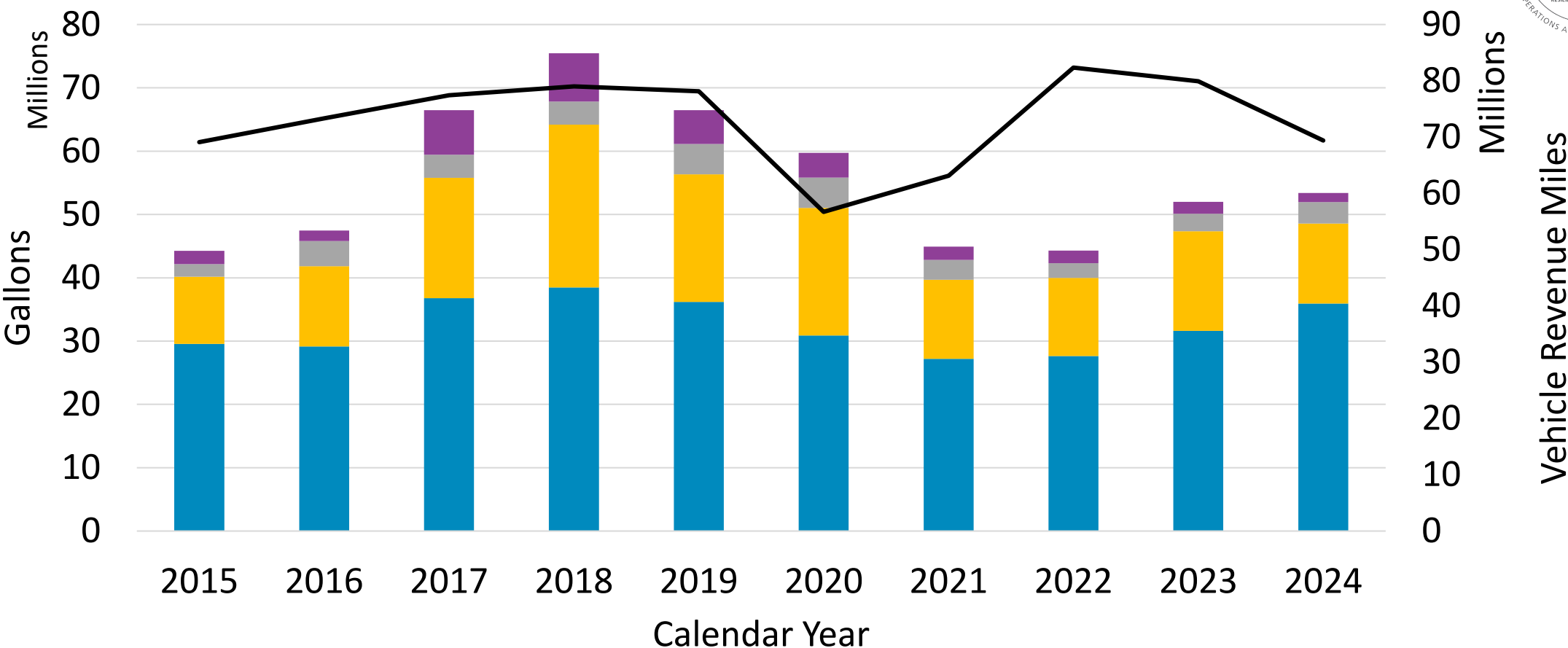


Metric tons of CO2e / thousand VRM



CY 2024 Sustainability Report:

Water Use by Category

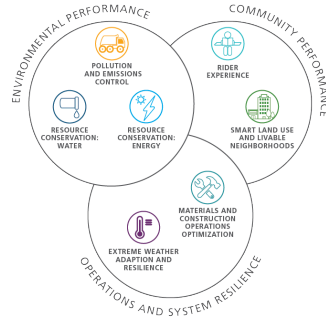
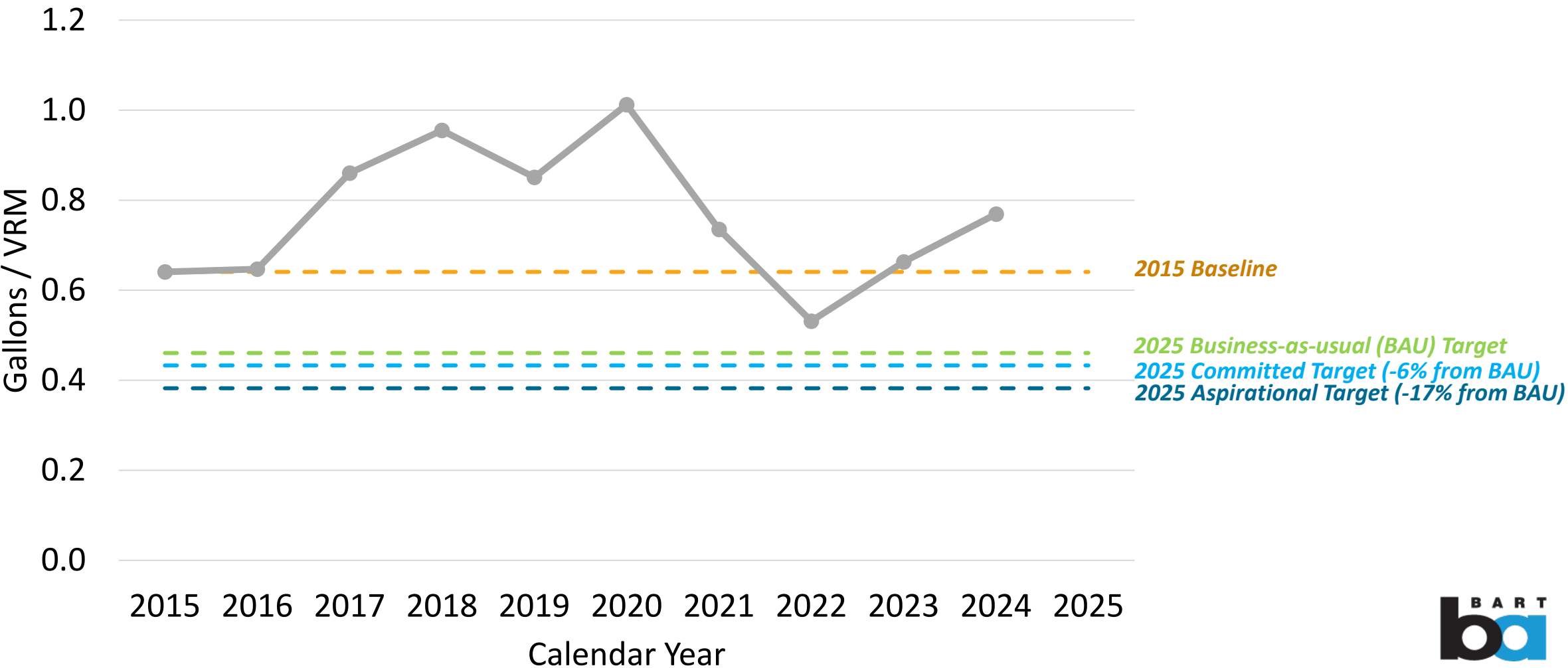


2023-2024 YOY % Change = +3% overall

- Station + 14%
- Shop/Yard -20%
- Office +22 %
- Other -2.66%
- VRM -13%

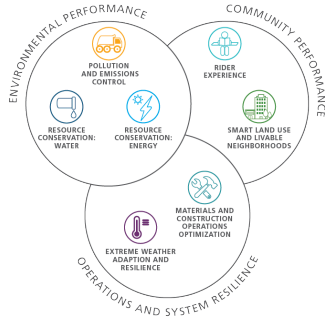
CY 2024 Sustainability Report:

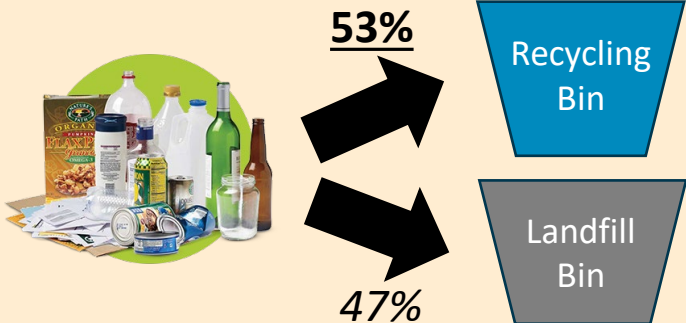

Water Use per VRM



CY 2024 Sustainability Report:


Waste at Stations – Setting a Baseline



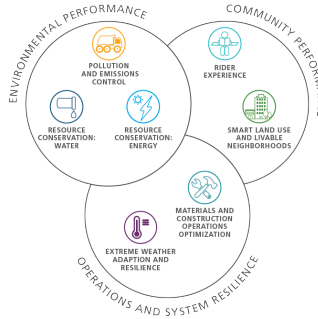
Metric	Definition		2024
Recycle capture rate at stations	Proportion of all recyclable material in the landfill and recycle streams that is successfully sorted into the recycle stream		<u>53%</u>
Recycle contamination rate at stations	Proportion of waste in recycle bins that is not recyclable		<u>21%</u>



CY 2024 Sustainability Report: Performance Metrics and Targets



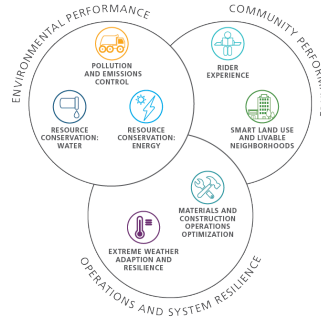
Category	Metric	Unit	2015 Baseline	2016	2017	2018	2019	2020	2021	2022	2023	2024	2025 Target
<div>  Smart Land Use and Livable Neighborhoods </div>	Residential Units	# of units	1,416	1,506	1,975	1,975	2,649	3,251	3,251	3,609	4,051	4,232	7,000
	Affordable Residential Units	# of affordable units	256	346	613	613	845	901	901	901	1,119	1,298	2,400
	Office/Commercial square footage	Square feet	188,590	188,590	194,590	194,590	637,590	643,690	643,690	658,690	854,754	874,590	1,000,000
	Mode share: Active (Walking and Bicycling)	%	44%	Will be measured in next Station Profile Survey (survey underway in 2025)									52%
	Mode share: Shared Mobility	%	29%	Will be measured in next Station Profile Survey (survey underway in 2025)									32%
	Mode share Drive & Park	%	27%	Will be measured in next Station Profile Survey (survey underway in 2025)									16%
	GHG emissions associated with passenger access	Kg of CO2e / rider / day	0.56	Will be measured in next Station Profile Survey (survey underway in 2025)									0.43

CY 2024 Sustainability Report: Performance Metrics and Targets

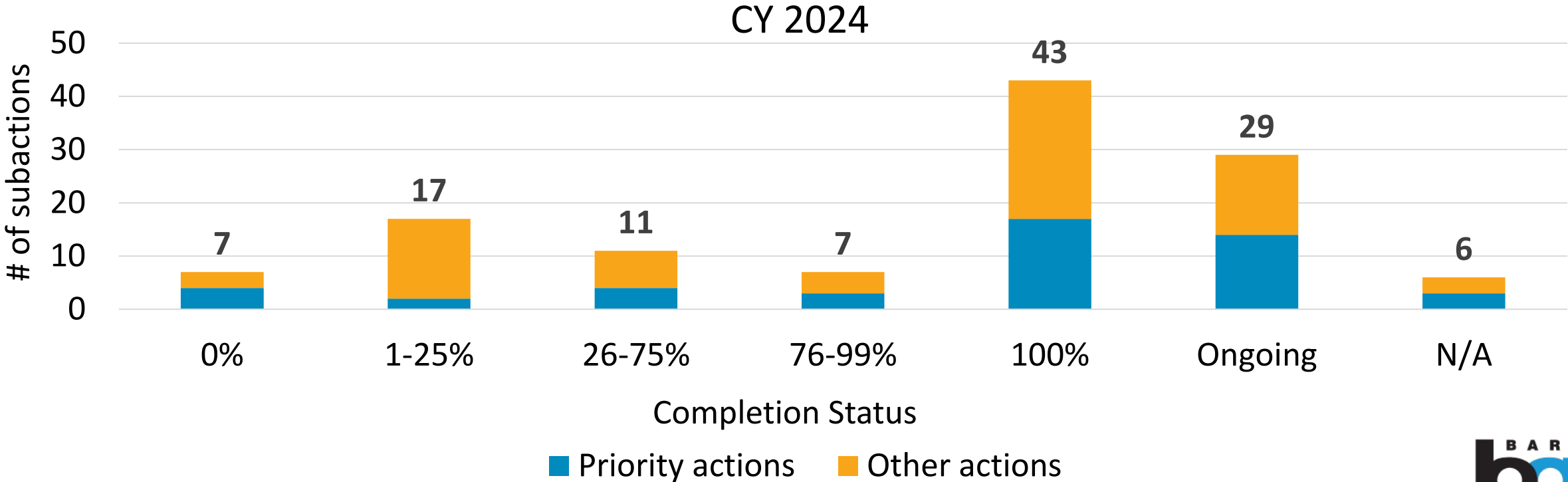


	Category	Metric	Unit	2015 Baseline	2016	2017	2018	2019	2020	2021	2022	2023	2024	2025 Target
	Rider Experience	Quarterly reporting of safety and performance indicators	Completed/ Not Completed	Completed										Completed
		Has BART met all adopted Performance Standards for Safety and Patron Comfort?	Yes/No	No										Yes
	Materials and Construction Operations Optimization	Percentage of BART Project Delivery Staff trained in BART Facilities Standards (BFS) Sustainability Controls	%	Training commenced in 2021.						18%	31%	90%	99%	100%
	Extreme Weather Adaptation and Resilience	100% High Priority Actions in the BART Local Hazard Mitigation Plan Actions are underway or complete	%	Tracking commenced in 2021.						86%	86%	100%	100%	100%

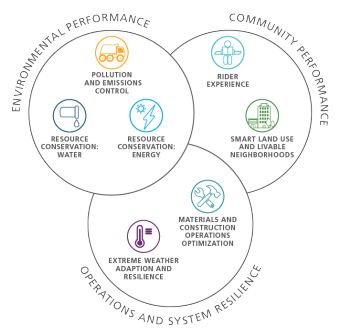
CY 2024 Sustainability Report: Year-over-year Completion of Action Plan Items



- 2017 Sustainability Action Plan contains 120 sub-actions to be completed by 2025
- **6 actions completed and 3 begun in 2024**



CY 2024 Sustainability Report: Priorities & Opportunities for 2025



2026-2035 Sustainability Action Plan

- Plan expected to be published by end of CY 2025



Energy Use & GHG Emissions

- Support Lighting Program implementation
- Supporting electrification of non-revenue vehicle fleet
- Continue expanding EV Charging infrastructure at facilities



Water

- Collect data to inform our water reduction strategies in shops & yards
- Engage with relevant departments for opportunities on managing water more efficiently



Emission and Pollution Control

- Expand recycling and composting to shops & yards
- Implementing recommendations from waste target setting project from 2024



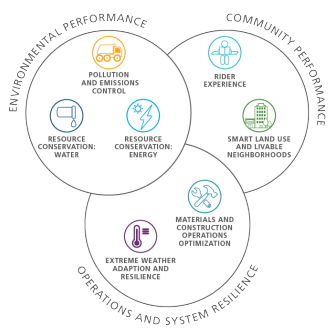
Extreme Weather Adaptation

- Define and codify BART's approach to resiliency

Appendix



2017 Sustainability Action Plan: Priority Actions



ENVIRONMENTAL PERFORMANCE PRIORITY ACTIONS

Resource Conservation – Energy and Greenhouse Gas Emissions

RCE 1	Increase Capacity to Support Regional Greenhouse Gas Goals
RCE 2	Adopt a Strategic Energy Plan
RCE 3	Make Renewable Energy Purchases
RCE 4	Invest in On-site Energy Generation
RCE 7	Invest in District Lighting Retrofits
RCE 8	Onboard new Energy Efficient Train Cars

Resource Conservation – Water

RCW 1	Regularly Audit Water Use and Correct Issues
RCW 3	Upgrade Water Fixtures

Emissions and Pollution Control

EP 1	Support Solid Waste Reduction
EP 4	Improve Recycling at All District Shops and Yards
EP 9	Clean and Reuse Water

OPERATIONS & SYSTEM RESILIENCE PRIORITY ACTIONS

Materials and Construction Operations Optimization

MC 2	Update the BART Facilities Standards (BFS) for Construction Activities
MC 6	Develop Sustainability Design Guidance

Extreme Weather Adaptation and Resilience

EWA 1	Coordinate with Regional Agencies in Climate Adaptation Planning and Implementation
EWA 2	Conduct Hazard Mitigation Planning

Smart Land Use and Livable Neighborhoods

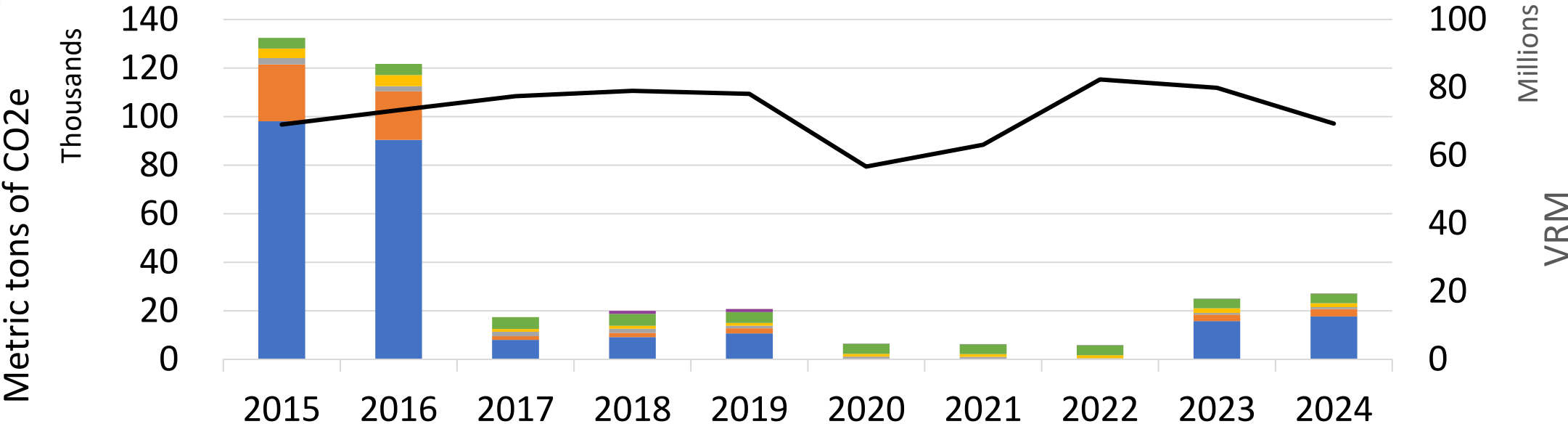
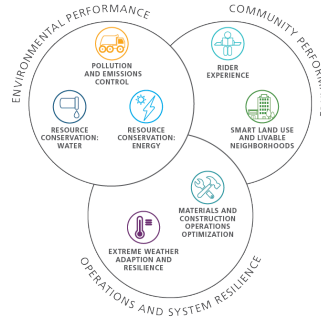
SLU 1	Improve Station Character and Community Fit
SLU 2	Continue to Lead the Region in Transit-Oriented Development
SLU 3	Connect to Community – Station Access

Rider Experience

RE 1	Create Cleaner Station Environments
RE 2	Create Safer Station Environments

COMMUNITY EXPERIENCE PRIORITY ACTIONS

CY 2024 Sustainability Report: GHG Emissions by Category

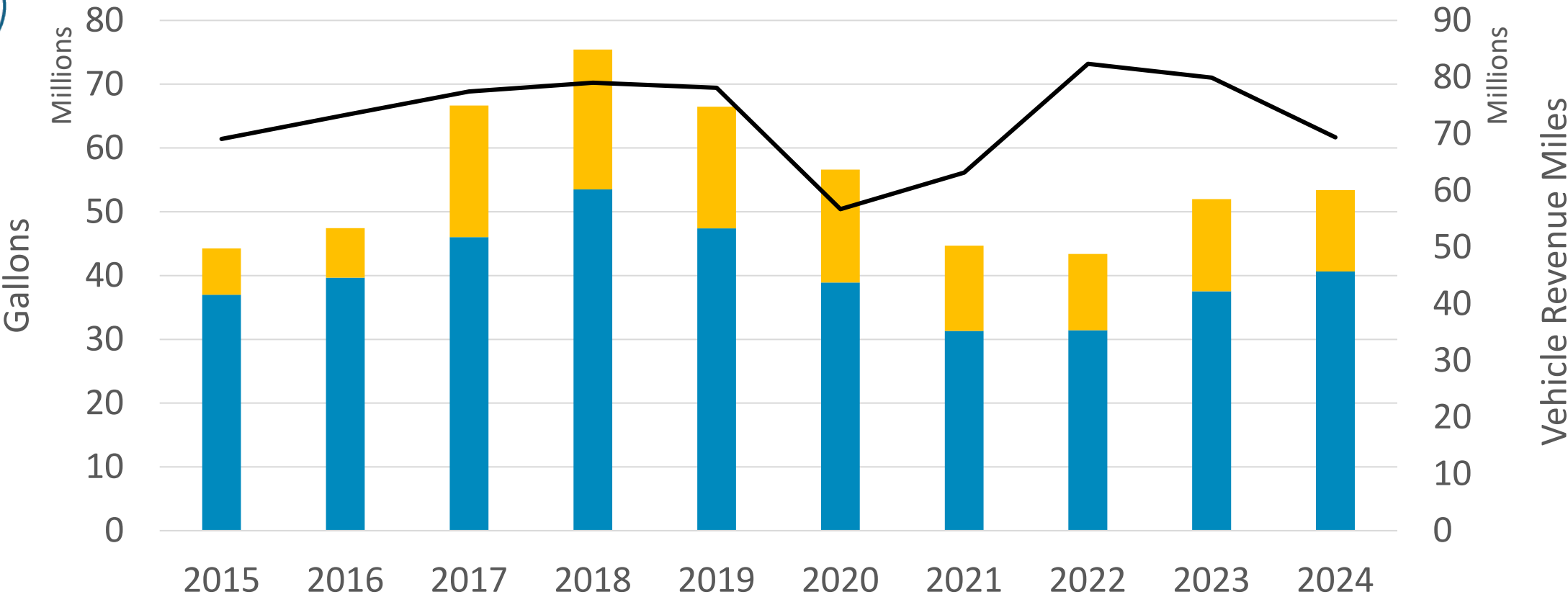
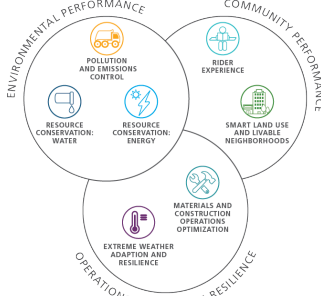


2023-2024 YOY % Change = -4.4% overall

- 4% Electric Traction
- 3% Offices
- 2% Non-Revenue Vehicles & Equipment
- 13% Vehicle Revenue Miles
- 1% Stations
- 16% Shops & Yards
- +1% Diesel Traction

CY 2024 Sustainability Report:

Water Use by Category

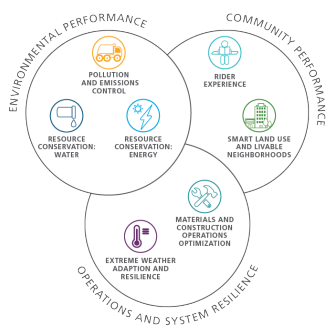


2023-2024 YOY % Change: ~5% overall

■ Multi-purpose +8% ■ Irrigation Only -12% —VRM -13%

CY 2024 Sustainability Report:

Station Access GHG Emissions - Methodology



- 2015 Station Profile Survey
 - % Access Mode from Home to BART
 - Median Distance by Mode
 - # of home-based entries
- Emission factors
 - Walking & biking assumed to have zero emissions
 - Bus/train/transit – used 2010 FTA figures
 - Motorcycles – FHWA average fuel economy; emission factor for gasoline
 - Driving alone/carpooling
 - American Community Survey 2015 data: 88% drove alone; 12% carpoled
 - Assumed average carpool size of 2.5
 - Calculated average 20-year fuel economy for USA light duty vehicles
 - Drop-off/taxi
 - Calculated average 20-year fuel economy for USA light duty vehicles
- Metric calculation
 - % access mode * median distance * # of entries * emission factor
 - 2025 Target = 24% of 2015 Baseline

Core BART Vehicle Revenue Miles by Month

