

Lafayette BART Bike Station & Town Center Pathway

Director Rinn Briefing

July 2025



Project Goals

Consistent with BART's *Station Access Policy* (Safer, Healthier, Greener; Innovation & Partnerships; Better Experience):

Improve pedestrian and bicycle access to Lafayette BART station from downtown Lafayette by providing:

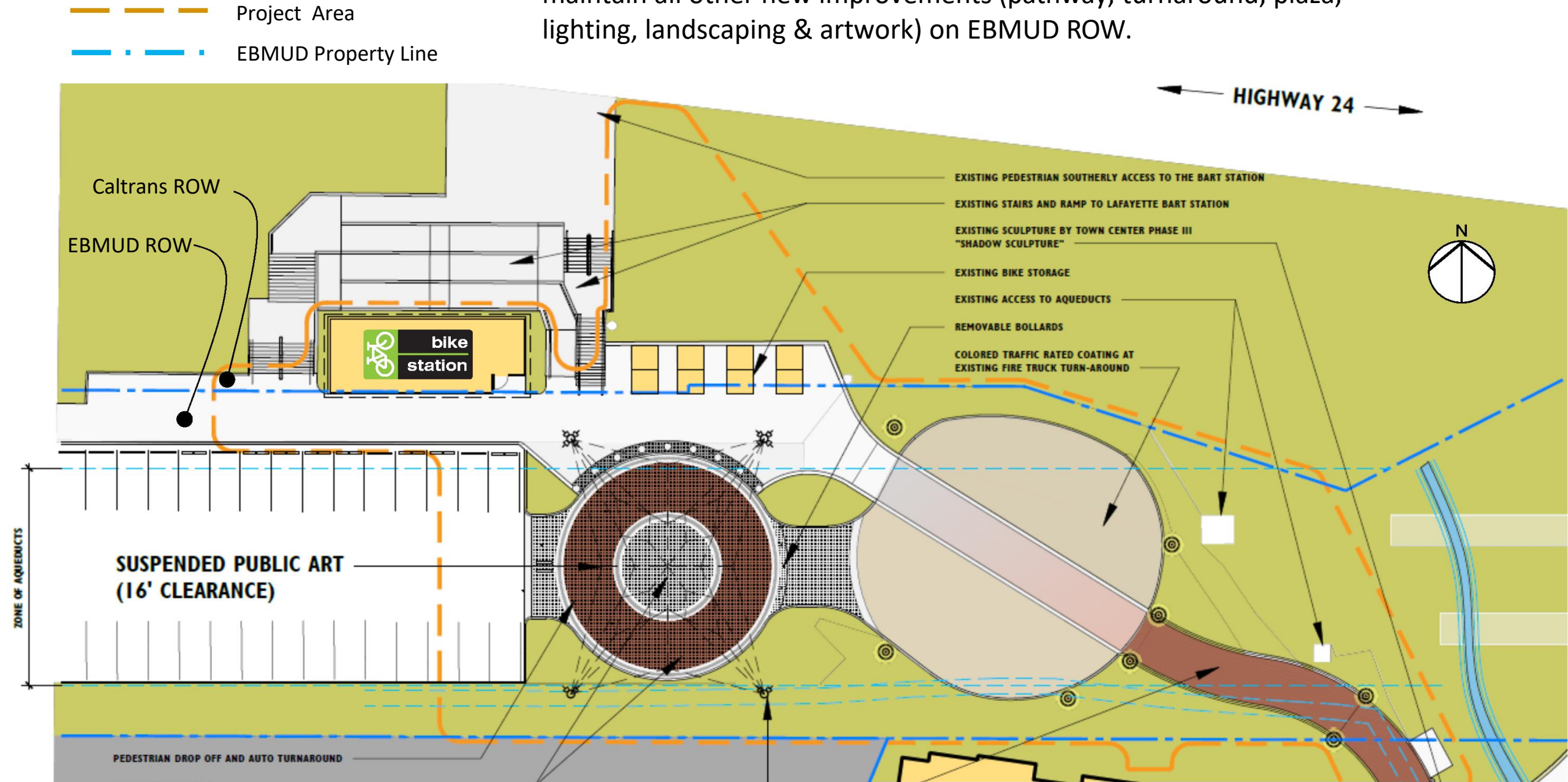
- Secure and sheltered bike parking for BART patrons
- Continuous accessible path of travel to the neighboring community
- Improved lighting
- Improved aesthetics and sense of place

Project Location



Site Plan

Note: BART will maintain Bike Station (on Caltrans ROW) & City will maintain all other new improvements (pathway, turnaround, plaza, lighting, landscaping & artwork) on EBMUD ROW.



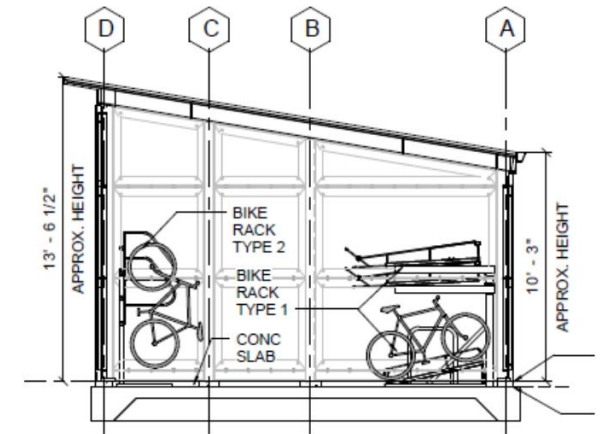
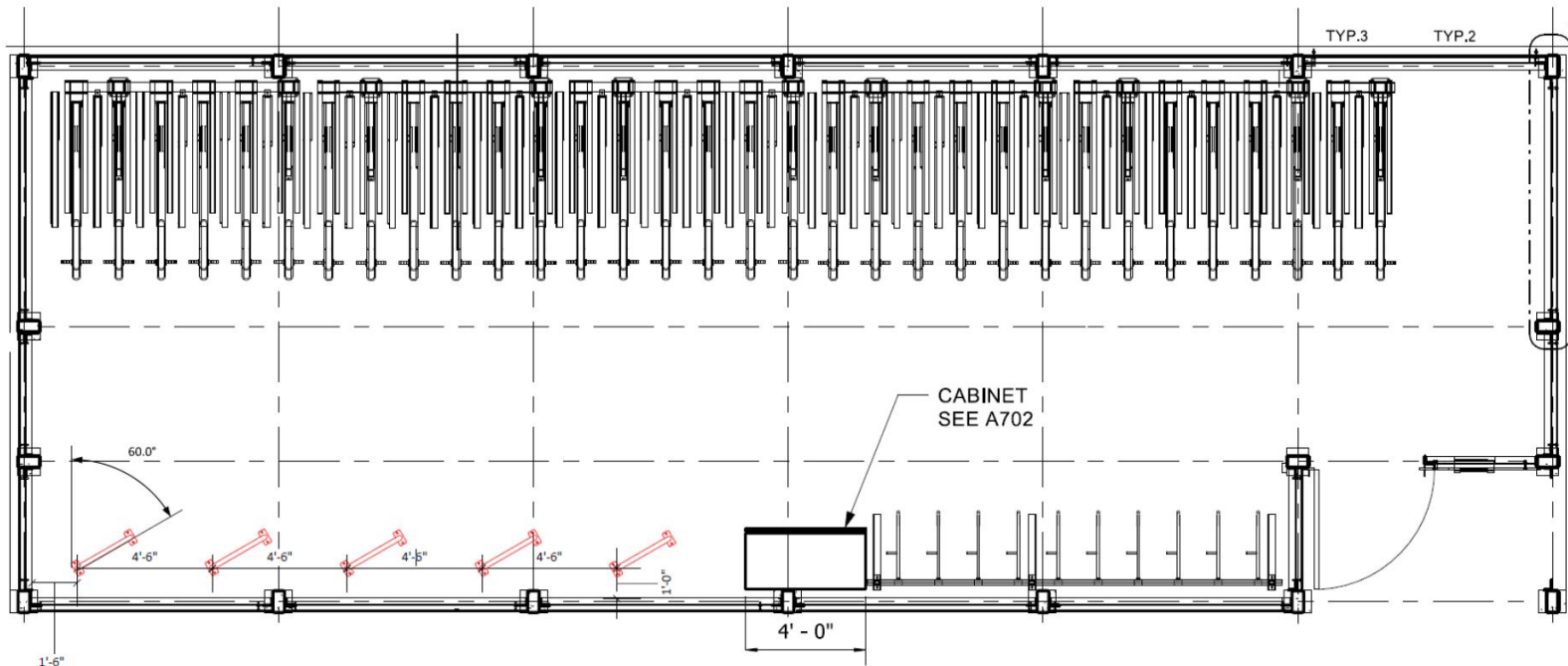
Existing Conditions

Lafayette Station, South Entrance



BART Modular Bike Station

- Self-park, 24/7 BikeLink cardkey & mobile app entry
- Capacity: ~80 bikes, including 5 oversize/cargo spaces
- Positions Lafayette BART for long-term growth in bike access



Lead Agency Roles & Responsibilities

Area of Responsibility	BART	City of Lafayette
Funding*	X	X
Design Bike Station	X	
Design Pathway, Plaza, Landscaping, Art		X
Construction		X
Operate & Maintain Bike Station	X	
Operate & Maintain Pathway, Plaza, Landscaping, Art		X

*Total project cost ~\$4M. Funding sources: CCTA Measure J, City funds, BART Measure RR funds.

Remaining Milestones

Date	Milestone
7/17/25	Advertise for Construction
Mid-August 2025	Open bids
Early Sept. 2025	Award contract
Sept.-Oct. 2025	Start construction
Winter/Spring 2025-26	Complete construction

Thank You

Lafayette EBMUD Aqueduct Trail



- City of Lafayette 2012 Feasibility & Options Study: Risa Rd. to Brown Ave. (1.4 mi.)
- Phase 1: Risa Rd. to Dolores Dr. is complete (.4 mi.)
- Phase 2: Dolores Dr. to Brown Ave. funded for design & const. (1 mi., incl. BART segment)
- Design kickoff: Summer 2025