



A85 Interlocking Project

Project Update & Staff Recommendations to Award / Authorize
May 14, 2026 | BART Board of Directors Meeting



Agenda

- Project Overview
- Stage Construction
- Shutdown Schedule
- Traffic Handling Plan
- Bus Bridge Planning
- Communication & Outreach Activities
- Recommendations to the Board



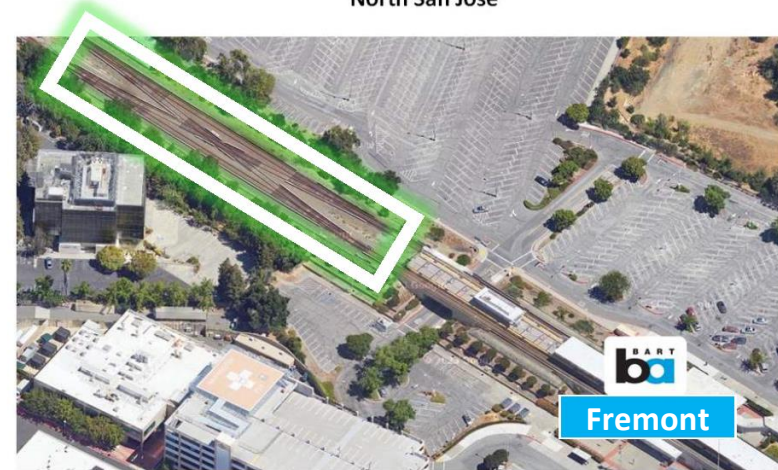
Project Overview

Project Scope:

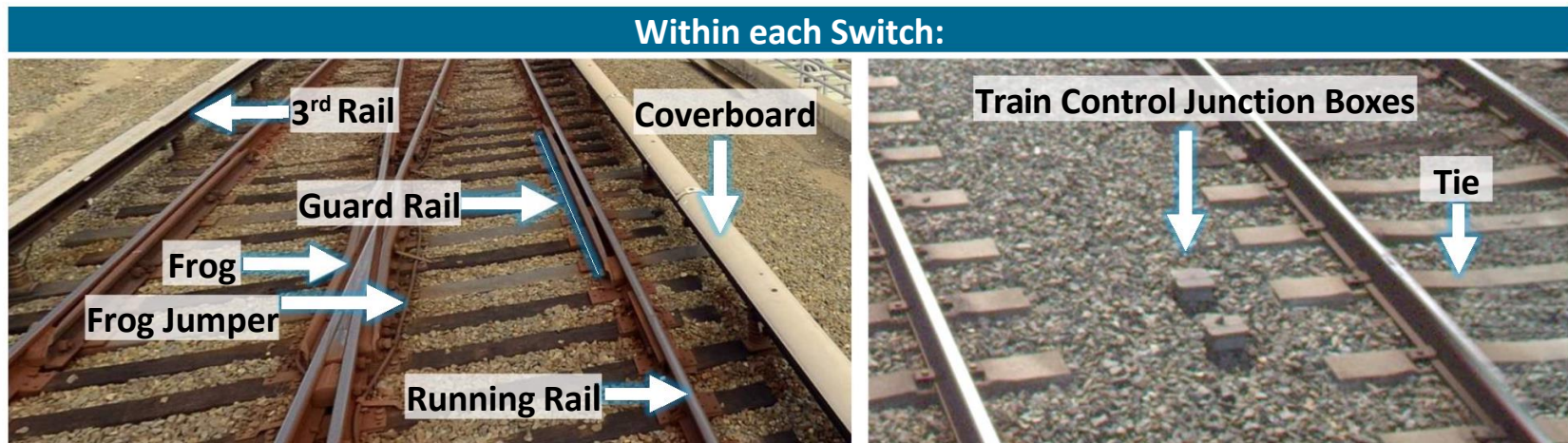
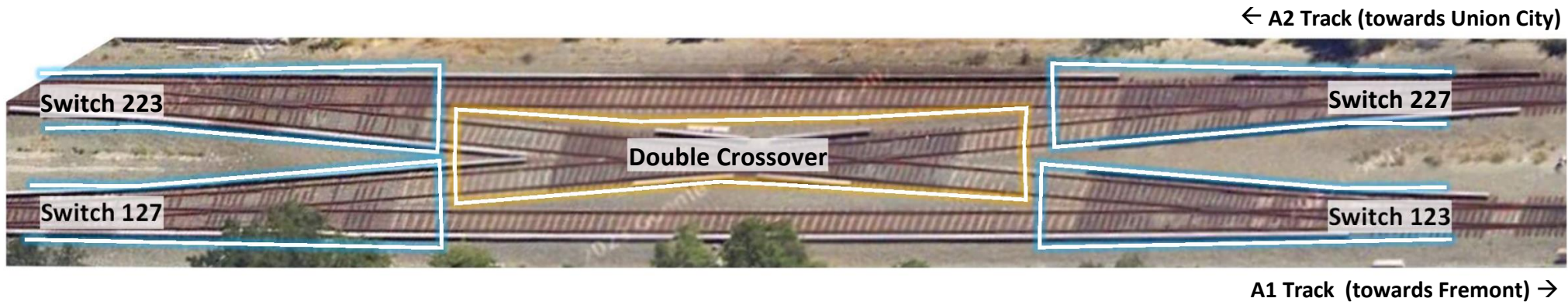
- A85 Interlocking between Union City & Fremont stations
- 4 Switches
- 1 Double Crossover
- 3000' Linear Feet Running Rail
- Associated Train Control and Traction Power Infrastructure

Purpose:

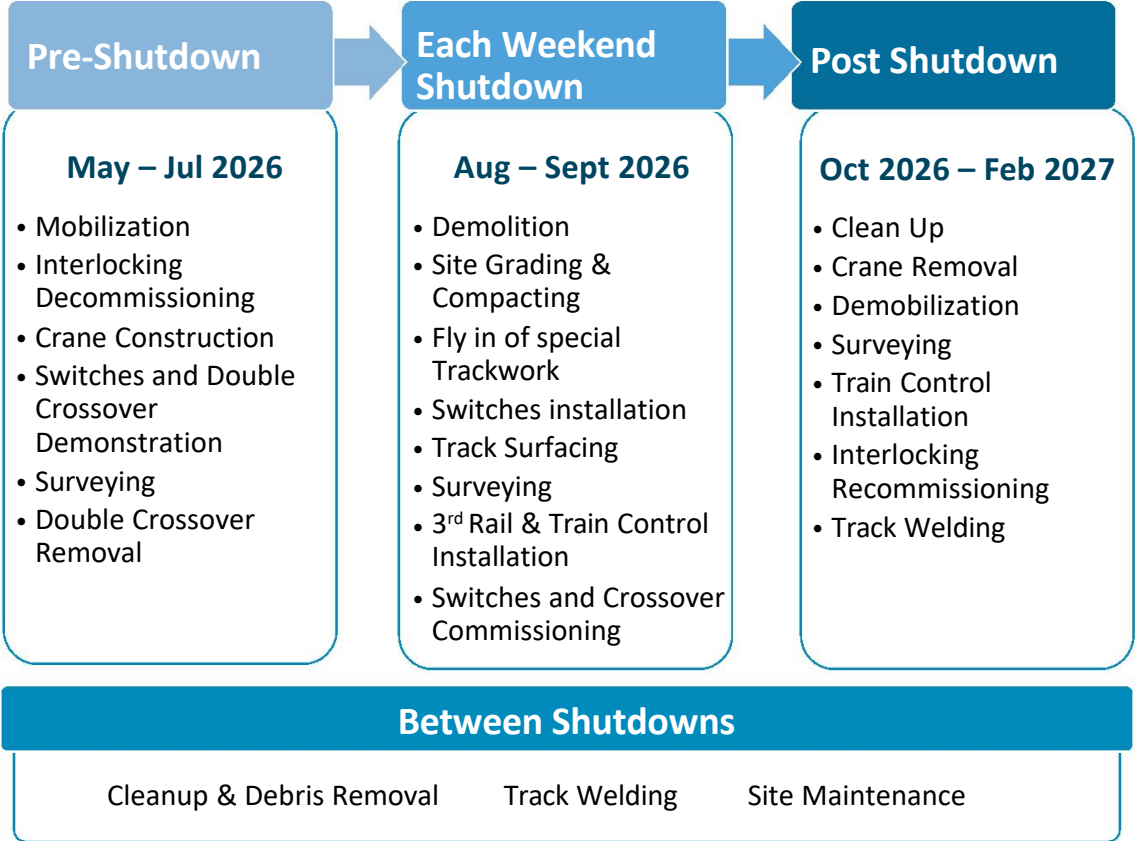
- Current interlocking exceeds intended lifespan
- History of heavy wear and degradation
- Escalating maintenance costs
- Improvement in reliability and operational capacity



Project Overview



Stage Construction



Example: Crane at Richmond Yard Interlocking Replacement Project

Thank you to our Labor Partners & Contractors



**Dates Subject to Change*



Shutdown Schedule

- **5 Weekend Shutdowns**
 - August – September 2026
 - Revenue hours remain unchanged, with the exception of the Fremont station closure
- **Weekend Shutdown Work Hours**
 - Beginning Saturdays at 1:30AM
 - Ending Mondays at 4:30AM

August 2026						
Mon	Tue	Wed	Thu	Fri	Sat	Sun
					1	2
3	4	5	6	7	8	9
10	11	12	13	14	15	16
17	18	19	20	21	22	23
24	25	26	27	28	29	30
31						

September 2026						
Mon	Tue	Wed	Thu	Fri	Sat	Sun
	1	2	3	4	5	6
7	8	9	10	11	12	13
14	15	16	17	18	19	20
21	22	23	24	25	26	27
28	29	30	31			

Shutdown #1

Shutdown #2

Shutdown #3

Shutdown #4

Shutdown #5



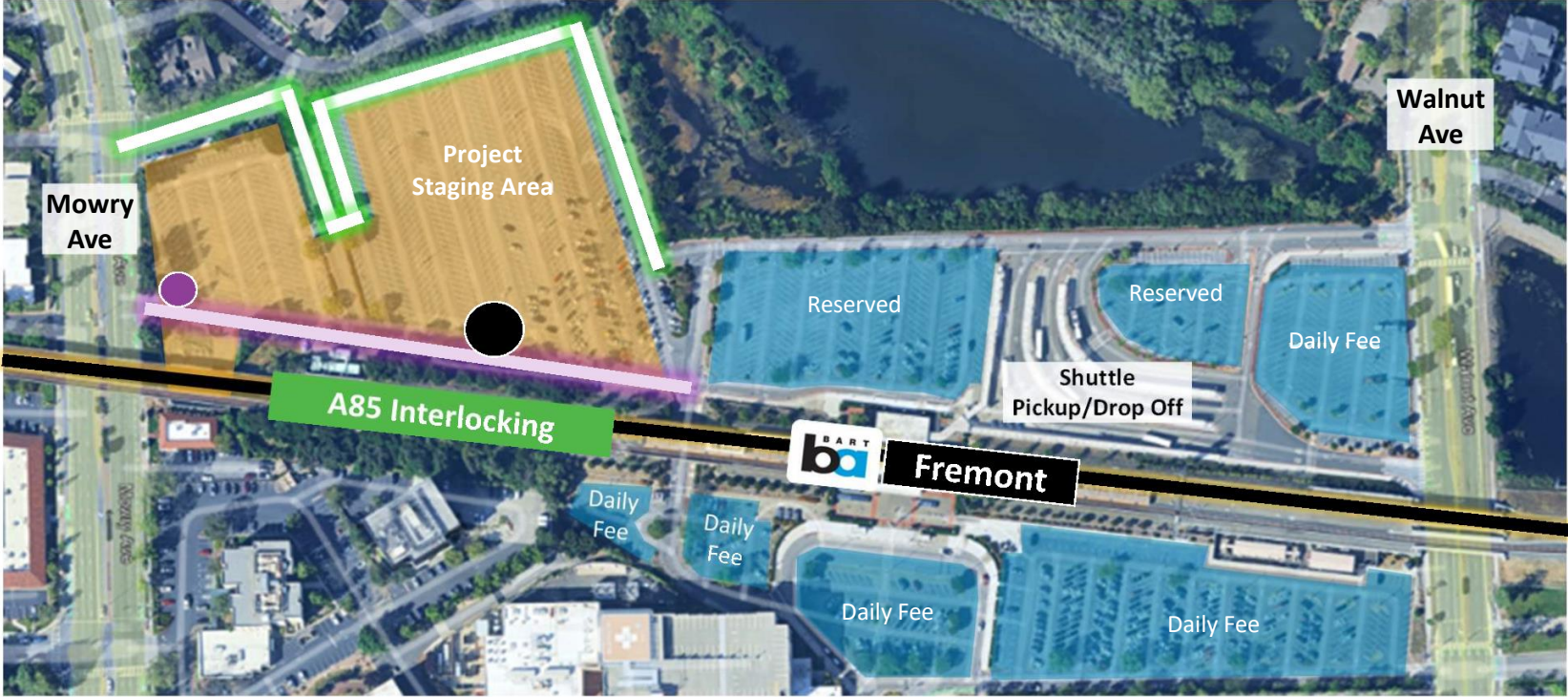
Weekend Shutdown

SW: Switch



**Dates Subject to Change*

Traffic Handling Plan



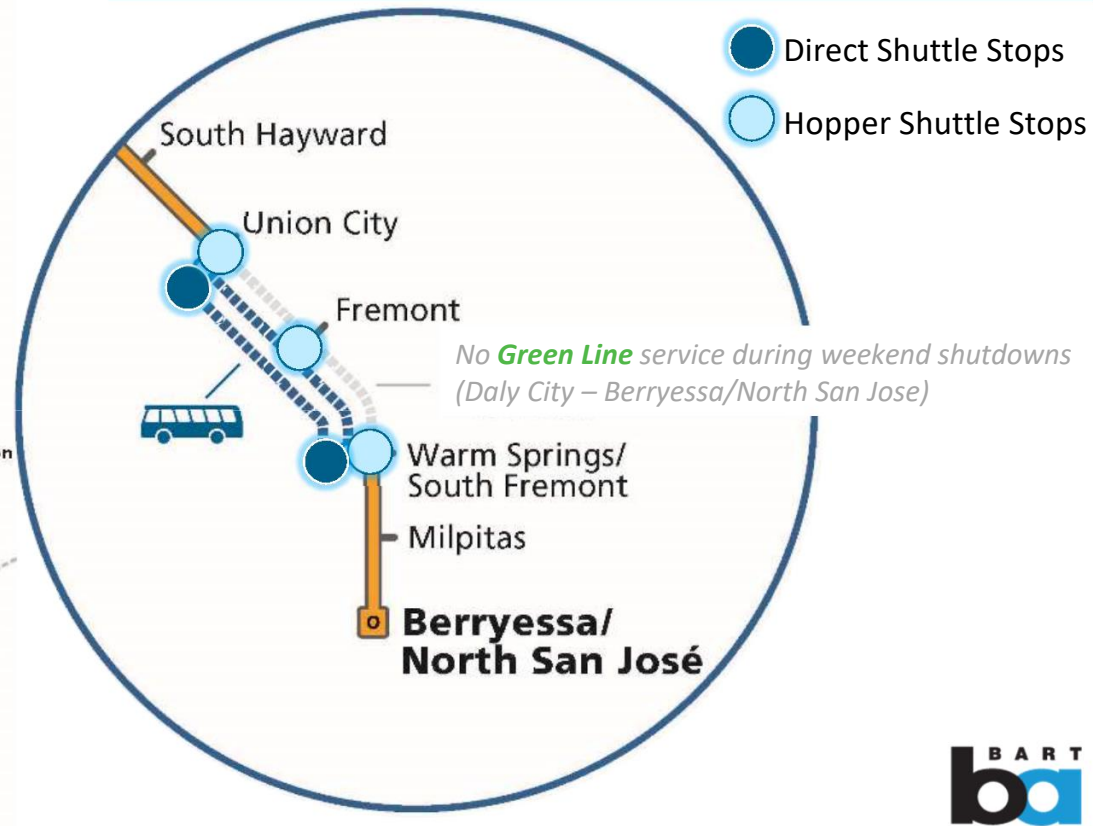
- Vehicle Traffic
- Pedestrian Traffic
- Project Staging Area
- Project Site
- Project Entrance
- Crane
- BART Parking
- BART Trackway



Bus Bridge Planning



- Trip Planner will be updated to reflect these changes
- Additional staff will be available at stations to assist passengers
- Direct Shuttle and Hopper Shuttle
 - Shuttles dispatch after each train arrives
 - Saturday Shuttle Hours: 5:30AM – 2:00AM
 - Sunday Shuttle Hours: 7:30AM- 2:00AM



Communication & Outreach Activities

ACTIVITY	STATUS
Partial Parking Lot Closure Email to Neighboring HOA	May
Partial Parking Lot Closure Outreach to Washington Hospital	May
Partial Parking Lot Closure Outreach to City of Fremont Elected Officials	May
Passenger Bulletin and Social Media	May
Neighborhood Mailer Before Construction	July
Outreach to City of Fremont and City of Union City Elected Officials	July
Outreach to Washington Hospital	July
Outreach to Community Orgs, Neighborhood Groups and Business Groups	July
Passenger Bulletin and Social Media	July
News Release and Media Interviews	July
Reminder Emails to all Groups	Week Before Each Scheduled Shutdown

Poster Example

WEEKEND SERVICE CHANGES
Track rebuilding projects between Rockridge and Lafayette stations

Free buses will replace trains between the Rockridge, Orinda, and Lafayette stations on Presidents Day weekend 2/18-20
Los autobuses gratuitos reemplazarán a los trenes entre las estaciones de Rockridge, Orinda y Lafayette el fin de semana del Día de los Presidentes.
免費巴士將在總統日週末(2月18日、19日、20日)替換 Rockridge、Orinda 及 Lafayette 站之間的列車。

Free buses will replace trains between the Rockridge, and Orinda stations on the following weekends: 4/1-2, 4/15-16, 5/13-14, 5/27-29 (Memorial Day weekend), and 6/10-11
Los autobuses gratuitos reemplazarán a los trenes entre las estaciones de Rockridge y Orinda en las fechas indicadas.
免費巴士將在以下週末替換 Rockridge 和 Orinda 站之間的列車。

PLAN FOR 30-MINUTE DELAYS ON THESE WORK WEEKENDS.
Espere retrasos de 30 minutos los fines de semana en los que haya trabajos planificados.
周末如有工作計劃，請注意您的行程可能會延誤 30 分鐘。

Go to bart.gov and use the Trip Planner, call the BART Transit Information Center at (510) 465-BART (2276), or get the official BART app for more info.



Recommendations to the Board

a) Authorization for the General Manager to award Agreement No. 6M3804 for A85 Special Trackwork Assembly and Grading Services in the amount of \$499,000.00 to Stacy and Witbeck, Inc. of Alameda, CA.

b) Authorization for the General Manager to award services agreements (including but not limited to, crane hoisting, on-call rental, and hauling services) to support the special trackwork repair at the A85 Interlocking for an aggregate amount not to exceed \$2,500,000.00.

c) Authorization for the General Manager to execute Change Order(s) to Contract No. 15EJ-180 (DMZ Builders), 34.5kV Cable Replacement and Fiber Optic Cable Installation, A-Line, in an amount not to exceed \$1,500,000.00 for repairs to restore traction power cables and associated infrastructure.

Thank You



Glossary

3rd Rail: A third rail is an electrified rail that runs next to the track and provides traction power to the trains.

Coverboard: A protective cover that is installed over the third rail that helps prevent accidental contact and protects the rail from debris and damage.

Crossover: Railroad track intersection where two tracks cross each other at the same grade, forming a diamond shape at the crossing point.

Double Crossover: Railroad track intersection with multiple crossovers

Frog: It is a crossing component where it allows train wheels to cross from one rail to another without sticking the crossing rail.

Frog Jumper: Electrical wire used to maintain continuity of track circuits across a frog—the crossing point in a switch where two rails intersect.

Guard Rail: Most common in areas such as turnouts, diamond crossings, and sharp curves. It is mounted parallel to the running rail, it guides the wheel flanges back towards the running rail to prevent derailment.

Interlocking: Combination of switches used to divert trains from one track to another.

Running Rail: One of the two rails of a railway track with which the wheels of a train make contact.

Switch Machine: An electromechanical device that allows trains to change tracks in switches .

Switches: Track component that switches the train from one track to another.

Tie: Is a component of a railroad track that sits underneath the rail. It maintains the correct gauge and distributes the load of wheels to the ballast or subgrade while securing the rails in place.

Train Control Junction Boxes: Train Control's electrical enclosures that connects on railway tracks for the MUX block system. These connections gives the trains block occupancy, speed codes, and routing through the interlocking.